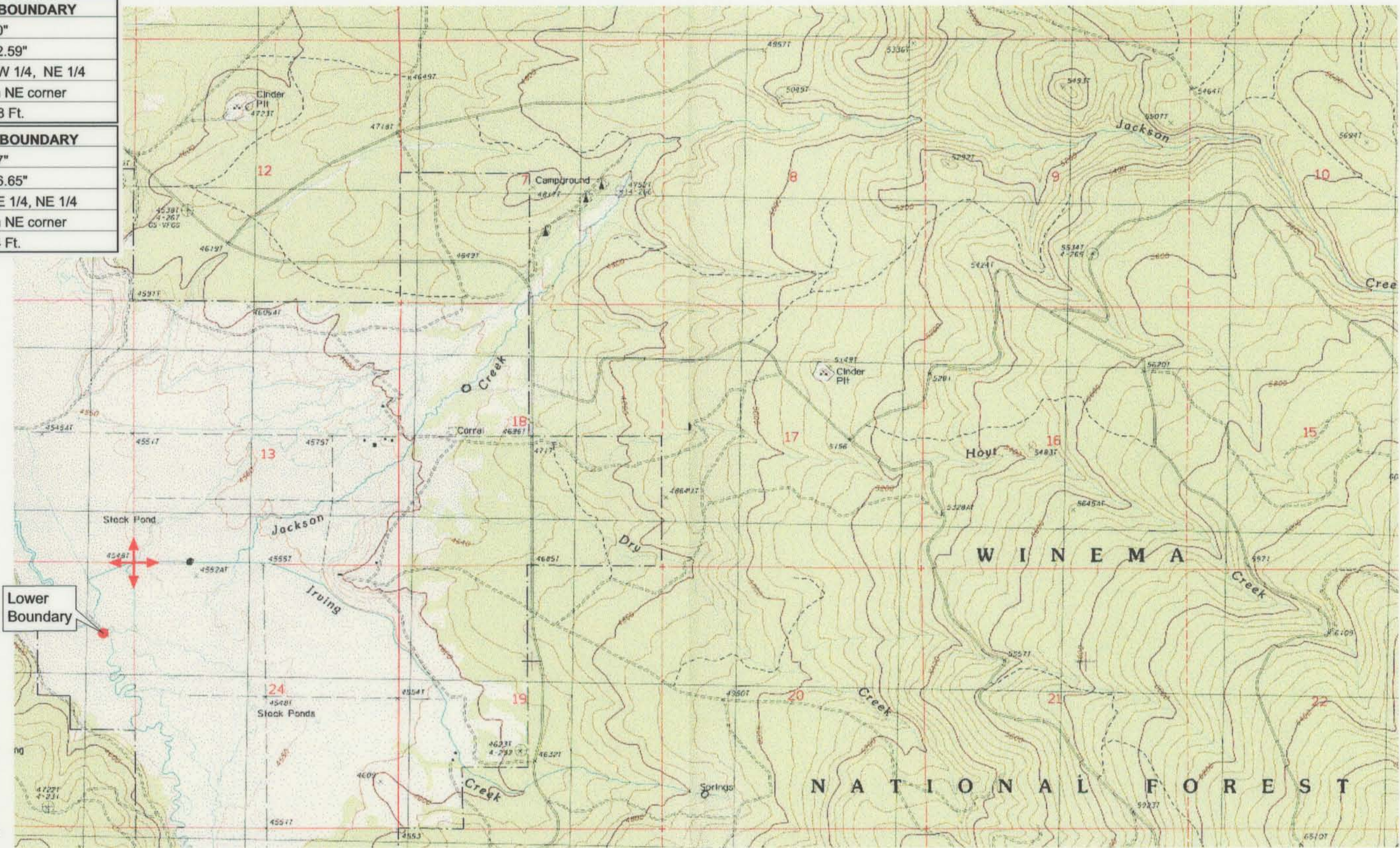


| |
|--|
| UPPER REACH BOUNDARY |
| Latitude: 42° 56' 50.20" |
| Longitude: 121° 21' 22.59" |
| T 30S, R 11E, S 25, NW 1/4, NE 1/4 |
| Bearing/Distance: From NE corner S 64° 33' 54" W, 2,019.8 Ft. |
| LOWER REACH BOUNDARY |
| Latitude: 42° 57' 35.97" |
| Longitude: 121° 29' 26.65" |
| T 30S, R 10E, S 23, SE 1/4, NE 1/4 |
| Bearing/Distance: From NE corner S 26° 52' 58" W, 1,647.4 Ft. |



Source: USGS 7.5 Minute Quad: Gordon Lake, Yamsay Mtn.
 Vertical Datum: National Geodetic Vertical Datum of 1929.
 Horizontal Datum: 1927 North American Datum.

KLAMATH ADJUDICATION
637
 CLAIM # PAGE # 018

Reach: Jackson Creek.
 Plate 2 of 2.

RECEIVED
 OCT 01 1999
 WATER RESOURCES DEPT.
 SALEM, OREGON

Klamath Basin Water Rights Claim #637
 Department of the Interior Bureau of Indian Affairs
 Reach Name: **Williamson River #14 (WM 14)**
 Scale: 1:24,000 (Amended)

\\Lafayette\Graphics\Projects\GIS\BIA\60177.26\Topo\1117gis1.fh8