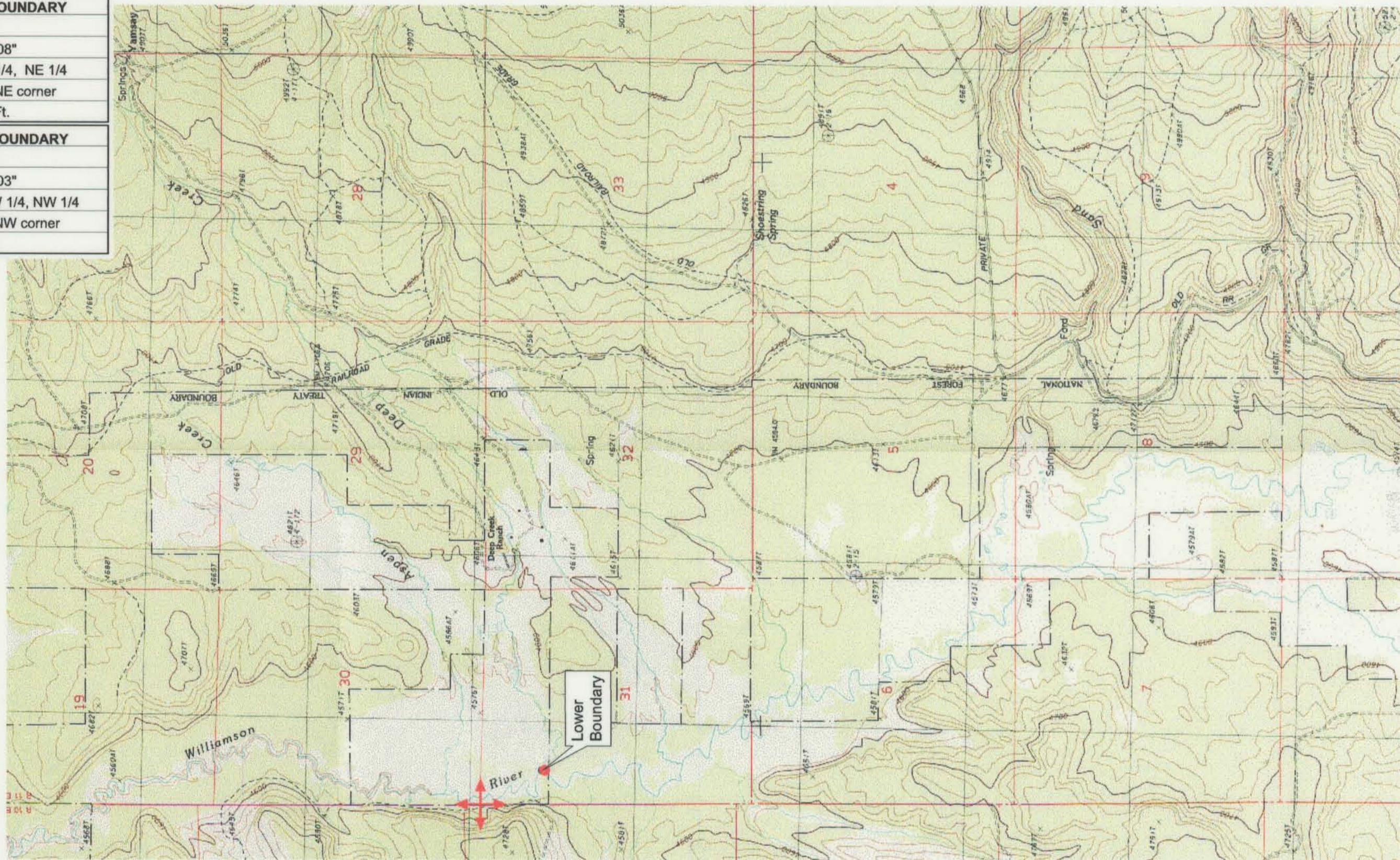


| |
|--|
| UPPER REACH BOUNDARY |
| Latitude: 42° 54' 51.79" |
| Longitude: 121° 21' 23.08" |
| T 31S, R 11E, S 1, SW 1/4, NE 1/4 |
| Bearing/Distance: From NE corner S 43° 57' 40" W, 2,594.7 Ft. |
| LOWER REACH BOUNDARY |
| Latitude: 42° 50' 42.76" |
| Longitude: 121° 27' 42.03" |
| T 31S, R 11E, S 31, NW 1/4, NW 1/4 |
| Bearing/Distance: From NW corner S 21° 33' 6" E, 1,558.4 Ft. |



Source: USGS 7.5 Minute Quad: The Bull Pasture, Yamsay Mtn., Gordon Lake Hamelton Butte.

Vertical Datum: National Geodetic Vertical Datum of 1929.
Horizontal Datum: 1927 North American Datum.

KLAMATH ADJUDICATION
CLAIM # 639 PAGE # 021

Reach: Deep Creek.
Plate 3 of 3.

RECEIVED

OCT 01 1999

WATER RESOURCES DEPT.
SALEM, OREGON

Klamath Basin Water Rights Claim #639
Department of the Interior Bureau of Indian Affairs
Reach Name: **Williamson River #16 (WM 16)**
Scale: 1:24,000 (Amended)

\\Lafayette\Graphics\Projects\GIS\BIA\60177.26\Topo\1117gis1.th8