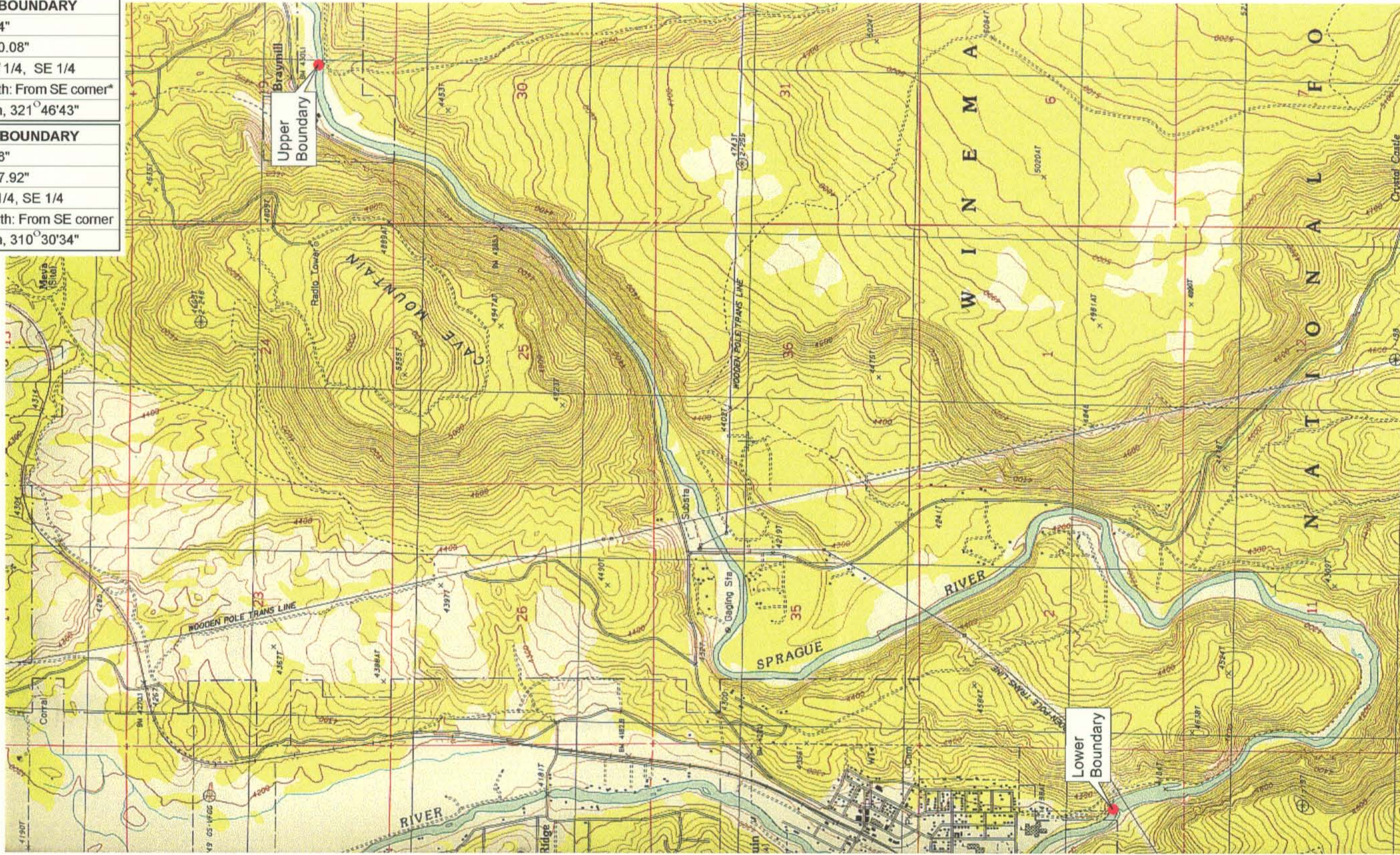


<b>UPPER REACH BOUNDARY</b>
Latitude: 42° 36' 25.64"
Longitude: 121° 48' 20.08"
T 34S, R 8E, S 19, NW 1/4, SE 1/4
Distance/Bearing/Azimuth: From SE corner*
N 38° 13' 17" W, 738.3m, 321° 46' 43"
<b>LOWER REACH BOUNDARY</b>
Latitude: 42° 33' 47.28"
Longitude: 121° 51' 37.92"
T 35S, R 7E, S 3, NE 1/4, SE 1/4
Distance/Bearing/Azimuth: From SE corner
N 49° 29' 26" W, 544.4m, 310° 30' 34"

\* See plate 3 of 3 of Sprague River #3 for corner



RECEIVED  
MAR 01 1999  
WATER RESOURCES DEPT.  
SALEM, OREGON

Source: USGS 7.5 Minute Quad: Chiloquin.  
Vertical Datum: National Geodetic Vertical Datum of 1929.  
Horizontal Datum: 1927 North American Datum.

**KLAMATH ADJUDICATION**  
CLAIM # **642** PAGE # **4**

Reach boundaries: Braymill to Chiloquin Dam.  
Plate 1 of 1.

**Klamath Basin Water Rights Claim Map**  
Department of the Interior Bureau of Indian Affairs  
Reach Name: **Sprague River #2**  
Scale: 1:24,000