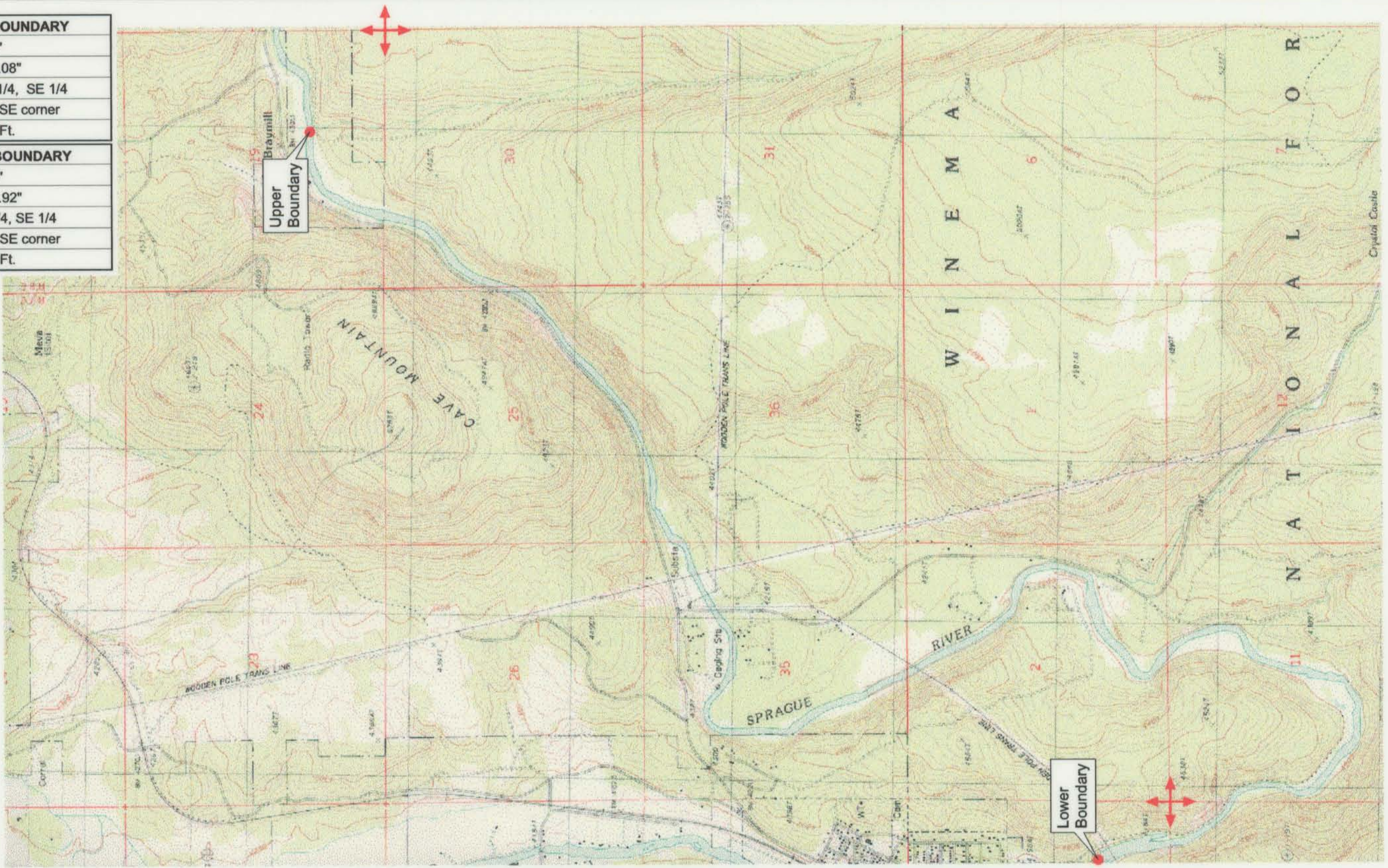


<b>UPPER REACH BOUNDARY</b>
Latitude: 42° 36' 25.64"
Longitude: 121° 48' 20.08"
T 34S, R 8E, S 19, NW 1/4, SE 1/4
Bearing/Distance: From SE corner N 51° 46' 43" W, 2,422.4 Ft.
<b>LOWER REACH BOUNDARY</b>
Latitude: 42° 33' 47.28"
Longitude: 121° 51' 37.92"
T 35S, R 7E, S 3, NE 1/4, SE 1/4
Bearing/Distance: From SE corner N 40° 30' 34" W, 1,786.3 Ft.



Source: USGS 7.5 Minute Quad: Chiloquin.

Vertical Datum: National Geodetic Vertical Datum of 1929.  
Horizontal Datum: 1927 North American Datum.

**KLAMATH ADJUDICATION**  
CLAIM # **642** PAGE # **015**

Reach boundaries: Braymill to Chiloquin Dam.  
Plate 1 of 1.

**RECEIVED**

OCT 01 1999

WATER RESOURCES DEPT.  
SALEM, OREGON

**Klamath Basin Water Rights Claim #642**  
Department of the Interior Bureau of Indian Affairs  
Reach Name: **Sprague River #2 (SP 2)**  
Scale: 1:24,000 (Amended)

\\Lafayette\Graphics\Projects\GIS\BIA\60177.26\Topo\1117gis3.fh8