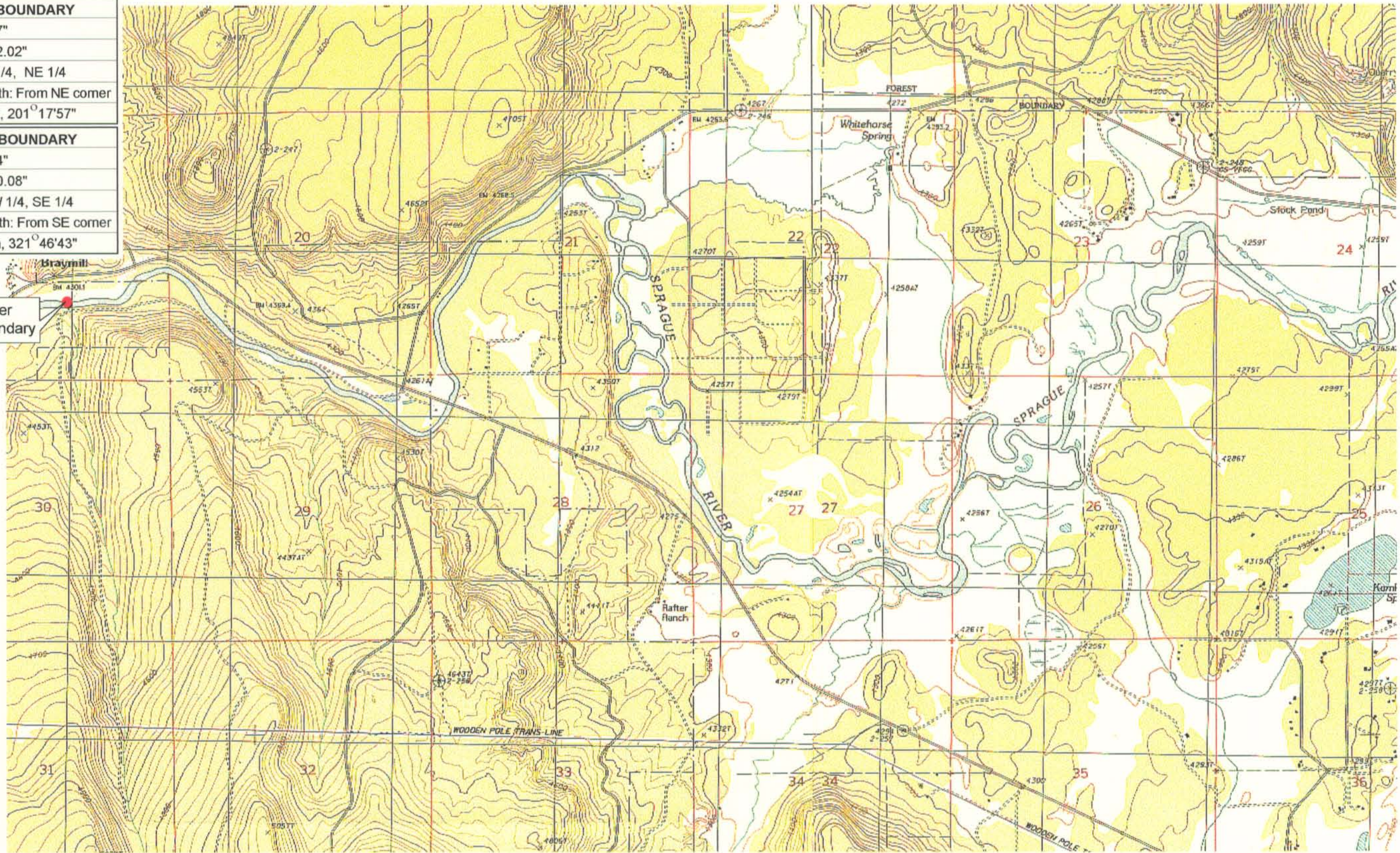


UPPER REACH BOUNDARY
Latitude: 42° 33' 20.57"
Longitude: 121° 38' 32.02"
T 35S, R 9E, S 9, NE 1/4, NE 1/4
Distance/Bearing/Azimuth: From NE corner S 21° 17' 57" W, 279.4m, 201° 17' 57"
LOWER REACH BOUNDARY
Latitude: 42° 36' 25.64"
Longitude: 121° 48' 20.08"
T 34S, R 8E, S 19, NW 1/4, SE 1/4
Distance/Bearing/Azimuth: From SE corner N 38° 13' 17" W, 738.3m, 321° 46' 43"



Lower Boundary

RECEIVED
MAR 01 1999
WATER RESOURCES DEPT.
SALEM, OREGON



Source: USGS 7.5 Minute
Quad: Chiloquin, S' Ocholis
Canyon.

Vertical Datum: National
Geodetic Vertical Datum of
1929.
Horizontal Datum: 1927 North
American Datum.

KLAMATH ADJUDICATION
CLAIM #643 PAGE # **8**

Reach boundaries: S' Ocholis Canyon to Braymill.
Plate 3 of 3.

Klamath Basin Water Rights Claim Map
Department of the Interior Bureau of Indian Affairs
Reach Name: **Sprague River #3**
Scale: 1:24,000

f:\60177.26\master\graphics\1117gis3.lh5