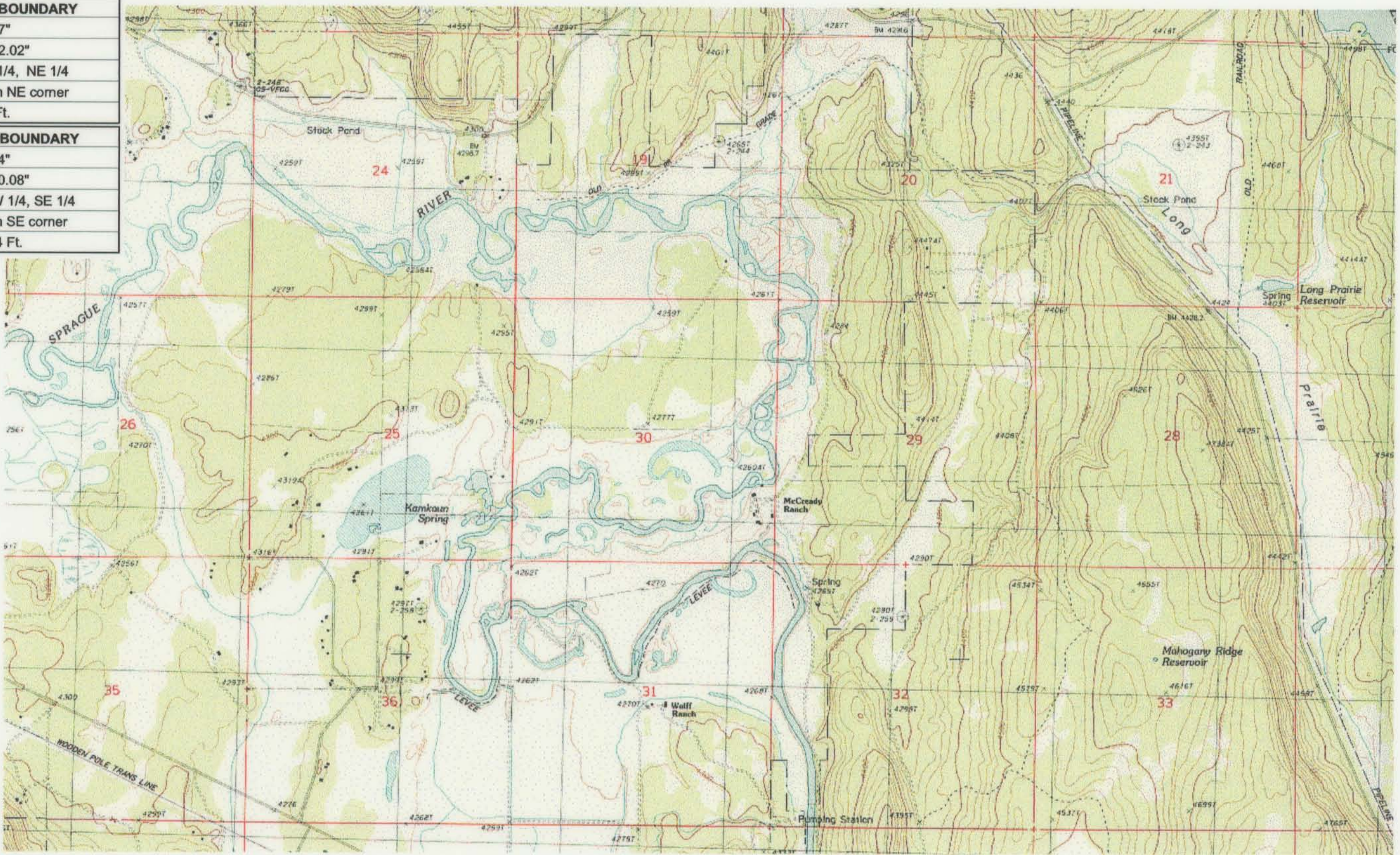


UPPER REACH BOUNDARY
Latitude: 42° 33' 20.57"
Longitude: 121° 38' 32.02"
T 35S, R 9E, S 9, NE 1/4, NE 1/4
Bearing/Distance: From NE corner
S 21° 17' 57" W, 916.9 Ft.
LOWER REACH BOUNDARY
Latitude: 42° 36' 25.64"
Longitude: 121° 48' 20.08"
T 34S, R 8E, S 19, NW 1/4, SE 1/4
Bearing/Distance: From SE corner
N 51° 46' 43" W, 2,422.4 Ft.



Source: USGS 7.5 Minute Quad: Chiloquin, S' Ochohis Canyon.

Vertical Datum: National Geodetic Vertical Datum of 1929.

Horizontal Datum: 1927 North American Datum.

KLAMATH ADJUDICATION
CLAIM # 643 PAGE # 020

Reach boundaries: S' Ochohis Canyon to Braymill.
 Plate 2 of 3.

RECEIVED
 OCT 01 1999
 WATER RESOURCES DEPT.
 SALEM, OREGON

Klamath Basin Water Rights Claim #643
 Department of the Interior Bureau of Indian Affairs
 Reach Name: **Sprague River #3 (SP 3)**
 Scale: 1:24,000 (Amended)

\\Lafayette\Graphics\Projects\GIS\BIA\60177.26\Topo\1117gis3.frb