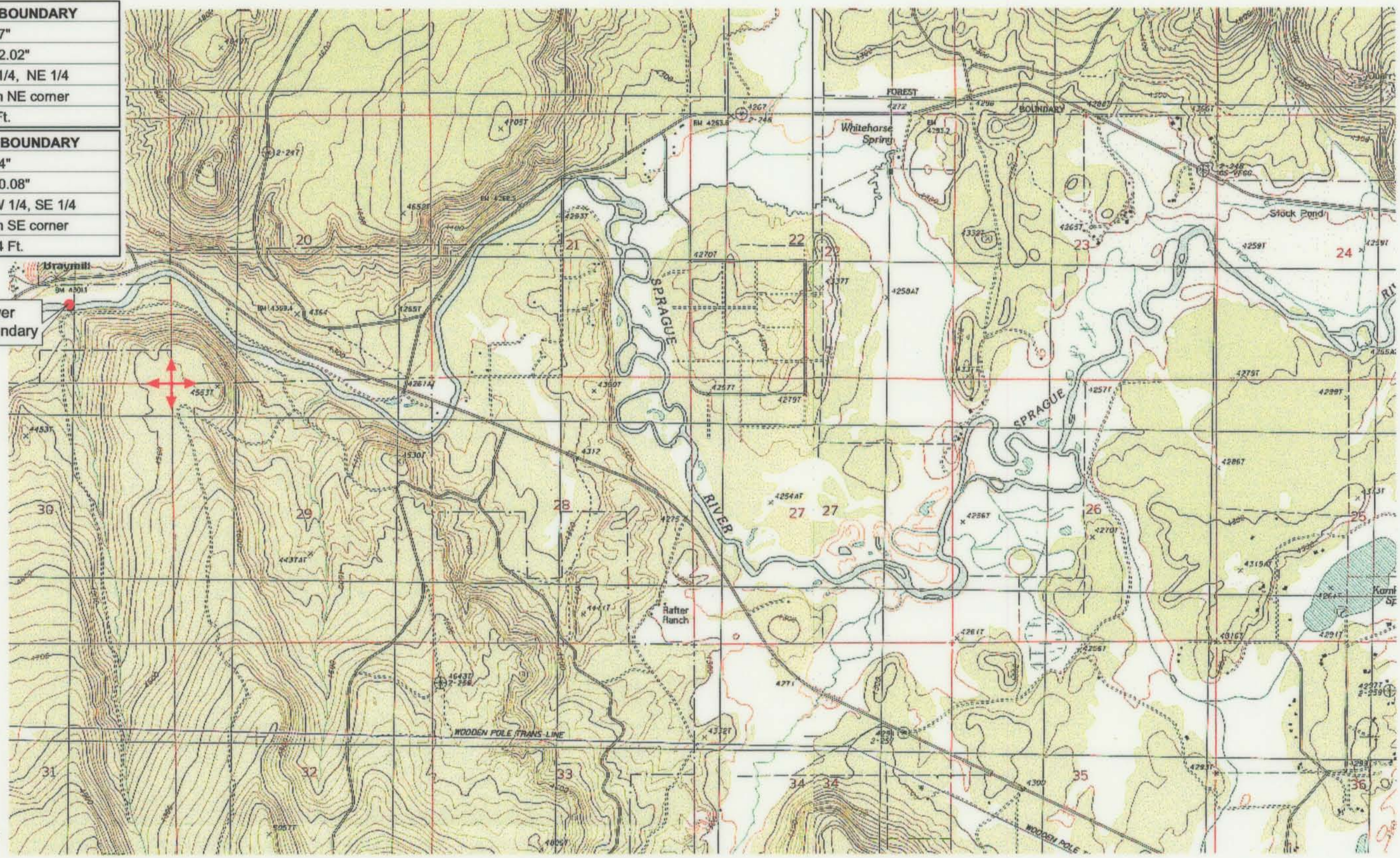


<b>UPPER REACH BOUNDARY</b>
Latitude: 42° 33' 20.57"
Longitude: 121° 38' 32.02"
T 35S, R 9E, S 9, NE 1/4, NE 1/4
Bearing/Distance: From NE corner S 21° 17' 57" W, 916.9 Ft.
<b>LOWER REACH BOUNDARY</b>
Latitude: 42° 36' 25.64"
Longitude: 121° 48' 20.08"
T 34S, R 8E, S 19, NW 1/4, SE 1/4
Bearing/Distance: From SE corner N 51° 46' 43" W, 2,422.4 Ft.



Lower Boundary

Source: USGS 7.5 Minute Quad: Chiloquin, S' Ocholis Canyon.  
Vertical Datum: National Geodetic Vertical Datum of 1929.  
Horizontal Datum: 1927 North American Datum.

**KLAMATH ADJUDICATION**  
 **643**  
 CLAIM # **PAGE 021**

Reach boundaries: S' Ocholis Canyon to Braymill.  
Plate 3 of 3.

**RECEIVED**  
OCT 01 1999

**Klamath Basin Water Rights Claim #643**  
 Department of the Interior Bureau of Indian Affairs  
 Reach Name: **Sprague River #3 (SP 3)**  
 Scale: 1:24,000 (Amended)

WATER RESOURCES DEPT.  
SALEM, OREGON

\\Lafayette\Graphics\Projects\GIS\BIA\60177.26\Topo\1117gis3.fh8