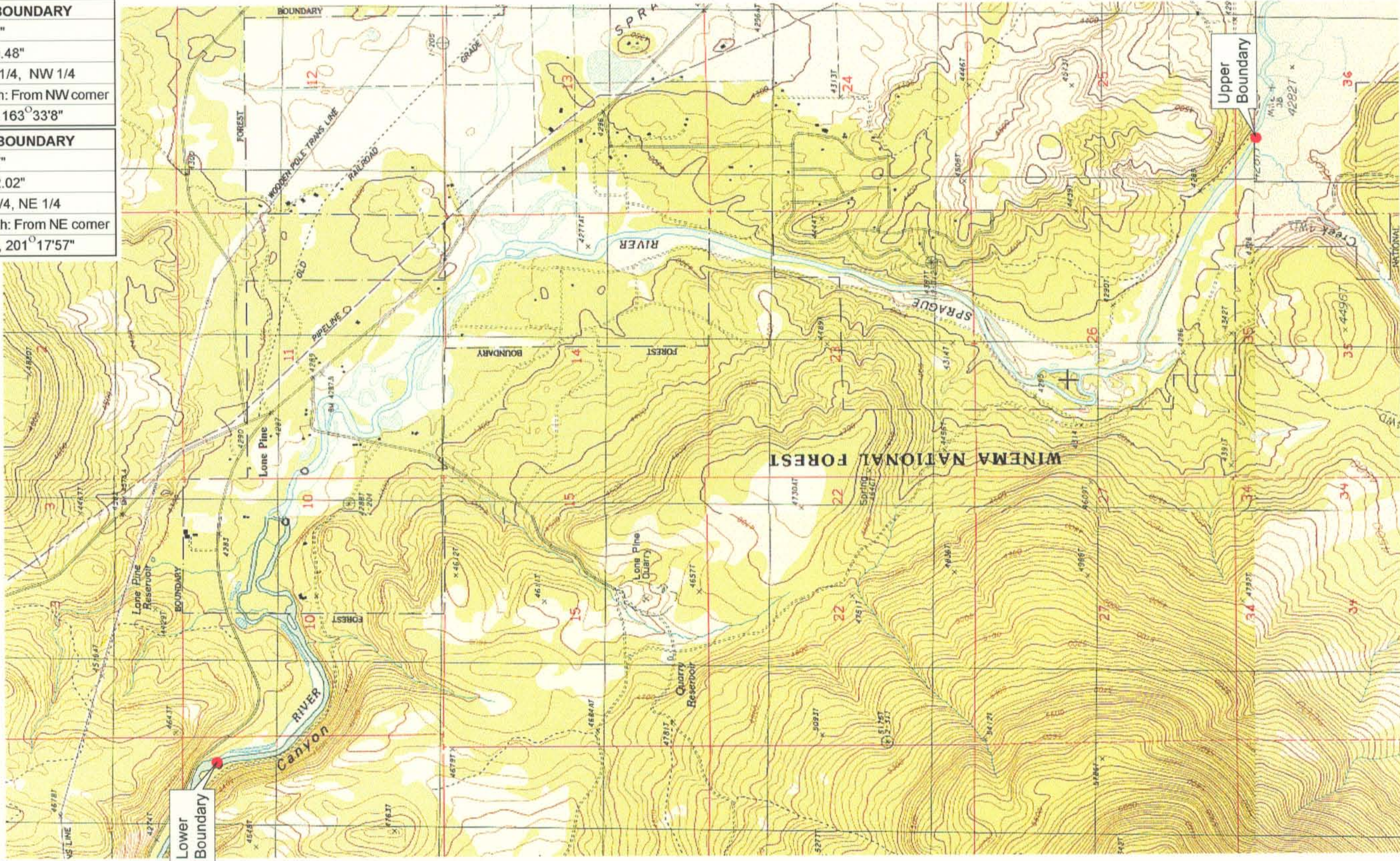


<b>UPPER REACH BOUNDARY</b>
Latitude: 42° 29' 59.77"
Longitude: 121° 35' 50.48"
T 35S, R 9E, S 36, NE 1/4, NW 1/4
Distance/Bearing/Azimuth: From NW corner S 16° 26' 52" E, 464.7m, 163° 33' 8"
<b>LOWER REACH BOUNDARY</b>
Latitude: 42° 33' 20.57"
Longitude: 121° 38' 32.02"
T 35S, R 9E, S 9, NE 1/4, NE 1/4
Distance/Bearing/Azimuth: From NE corner S 21° 17' 57" W, 279.4m, 201° 17' 57"



**RECEIVED**  
MAR 01 1999  
WATER RESOURCES DEPT.  
SALEM, OREGON



Source: USGS 7.5 Minute  
Quad: Sprague River West,  
S' Ocholis Canyon, Buttes of  
the Gods.

Vertical Datum: National  
Geodetic Vertical Datum of  
1929.  
Horizontal Datum: 1927 North  
American Datum.

**KLAMATH ADJUDICATION**  
**CLAIM # 644 PAGE # 4**

Reach boundaries: Trout Creek to Upper end of S' Ocholis Canyon.  
Plate 1 of 1.

**Klamath Basin Water Rights Claim Map**  
Department of the Interior Bureau of Indian Affairs  
Reach Name: **Sprague River #4**  
Scale: 1:24,000