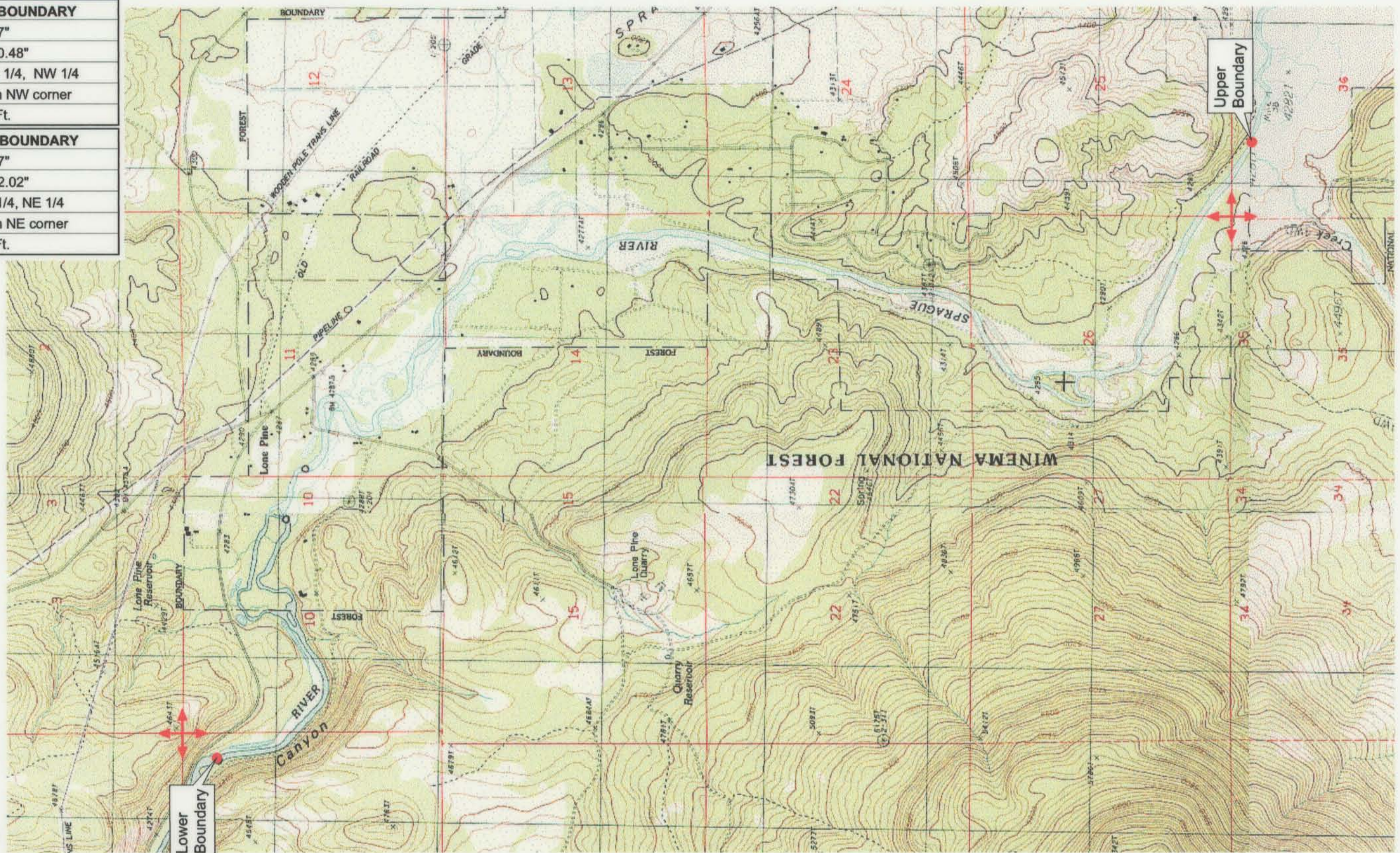


UPPER REACH BOUNDARY
Latitude: 42° 29' 59.77"
Longitude: 121° 35' 50.48"
T 35S, R 9E, S 36, NE 1/4, NW 1/4
Bearing/Distance: From NW corner S 73° 33' 8" E, 1,524.6 Ft.
LOWER REACH BOUNDARY
Latitude: 42° 33' 20.57"
Longitude: 121° 38' 32.02"
T 35S, R 9E, S 9, NE 1/4, NE 1/4
Bearing/Distance: From NE corner S 21° 17' 57" W, 916.9 Ft.



Source: USGS 7.5 Minute Quad: Sprague River West, S' Ocholis Canyon, Buttes of the Gods.

Vertical Datum: National Geodetic Vertical Datum of 1929.

Horizontal Datum: 1927 North American Datum.

KLAMATH ADJUDICATION
CLAIM # 644 PAGE # 015

Reach boundaries: Trout Creek to Upper end of S' Ocholis Canyon.
 Plate 1 of 1.

RECEIVED
OCT 01 1999
 WATER RESOURCES DEPT.
 SALEM, OREGON

Klamath Basin Water Rights Claim #644
 Department of the Interior Bureau of Indian Affairs
 Reach Name: **Sprague River #4 (SP 4)**
 Scale: 1:24,000 (Amended)

\\Lafayette\Graphics\Projects\GIS\BIA\60177.26\Topo\1117gis3.fh8