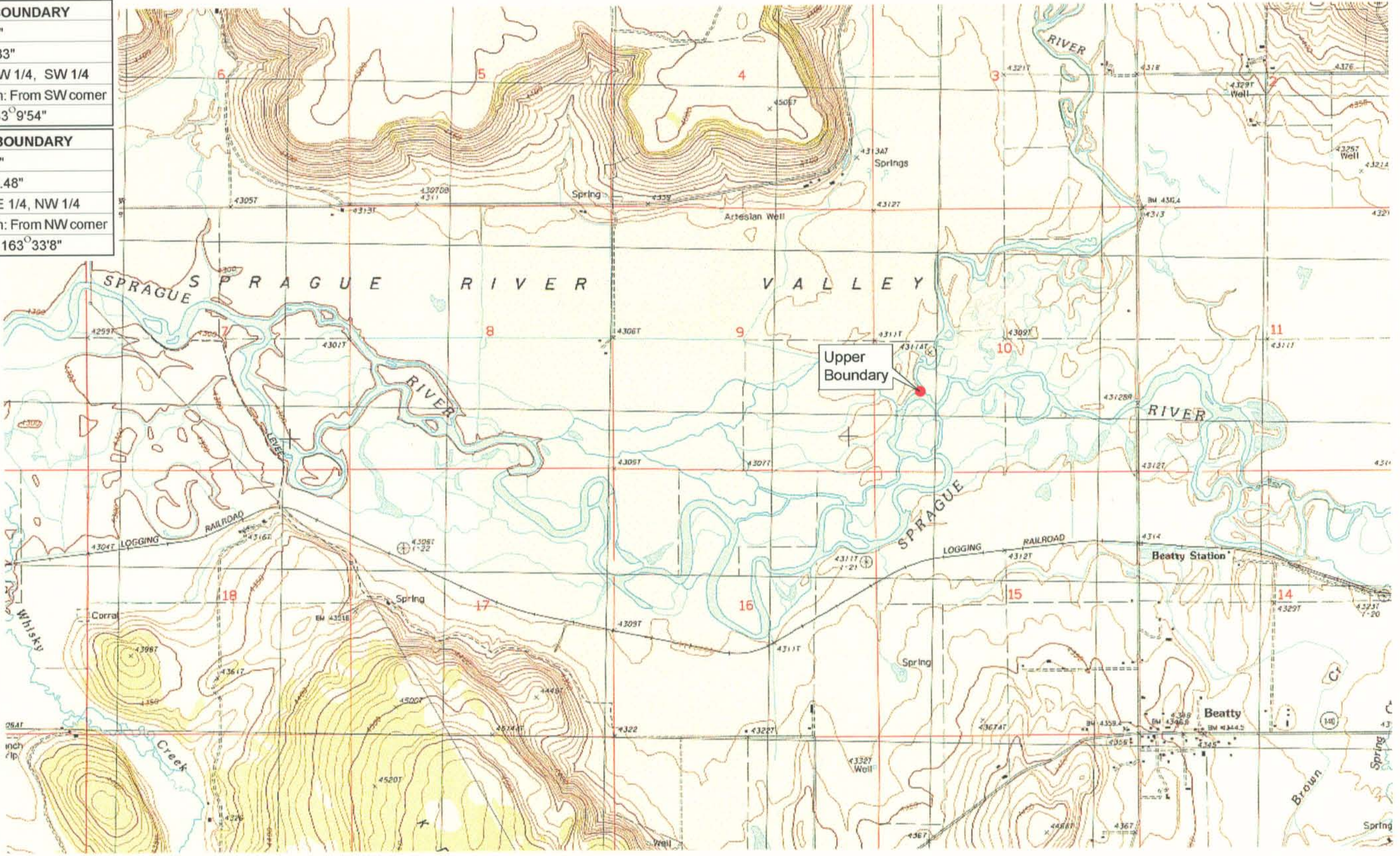


<b>UPPER REACH BOUNDARY</b>
Latitude: 42° 27' 38.36"
Longitude: 121° 17' 9.83"
T 36S, R12E, S 10, NW 1/4, SW 1/4
Distance/Bearing/Azimuth: From SW corner N 33° 9' 54" E, 541.8m, 33° 9' 54"
<b>LOWER REACH BOUNDARY</b>
Latitude: 42° 29' 59.77"
Longitude: 121° 35' 50.48"
T 35S, R 9E, S 36, NE 1/4, NW 1/4
Distance/Bearing/Azimuth: From NW corner S 16° 26' 52" E, 464.7m, 163° 33' 8"

**RECEIVED**  
MAR 01 1999  
WATER RESOURCES DEPT.  
SALEM, OREGON



Source: USGS 7.5 Minute Quad: Beatty, Sprague River East, Buttes of the Gods, Sprague River West.

Vertical Datum: National Geodetic Vertical Datum of 1929.  
Horizontal Datum: 1927 North American Datum.

**KLAMATH ADJUDICATION**  
CLAIM # **645** PAGE # **6**

Reach boundaries: Sycan River to Trout Creek.  
Plate 1 of 4.

**Klamath Basin Water Rights Claim Map**  
Department of the Interior Bureau of Indian Affairs  
Reach Name: **Sprague River #5**  
Scale: 1:24,000

f:\60177.26\master\graphics\1117gis3.fh5