

UPPER REACH BOUNDARY	
Latitude:	42° 27' 38.36"
Longitude:	121° 17' 9.83"
T 36S, R12E, S 10, NW 1/4, SW 1/4	
Distance/Bearing/Azimuth: From SW corner N 33° 9' 54" E, 541.8m, 33° 9' 54"	
LOWER REACH BOUNDARY	
Latitude:	42° 29' 59.77"
Longitude:	121° 35' 50.48"
T 35S, R 9E, S 36, NE 1/4, NW 1/4	
Distance/Bearing/Azimuth: From NW corner S 16° 26' 52" E, 464.7m, 163° 33' 8"	

RECEIVED

MAR 01 1999

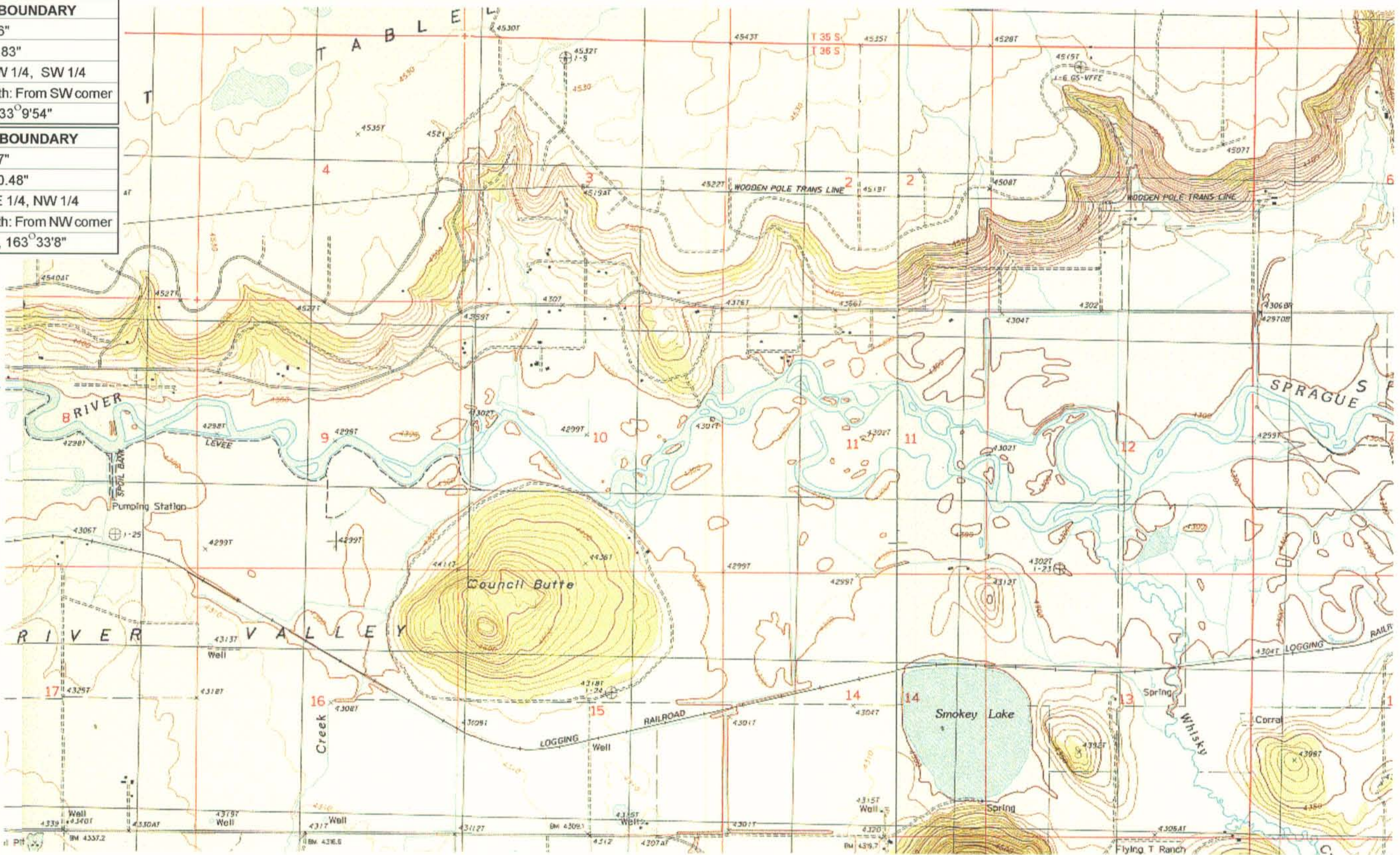
WATER RESOURCES DEPT.
SALEM, OREGON



Source: USGS 7.5 Minute
Quad: Beatty, Sprague River
East, Buttes of the Gods,
Sprague River West.

Vertical Datum: National
Geodetic Vertical Datum of
1929.

Horizontal Datum: 1927 North
American Datum.



KLAMATH ADJUDICATION

CLAIM # **45** PAGE #

7

Reach: Sycan River to Trout Creek.
Plate 2 of 4.

Klamath Basin Water Rights Claim Map

Department of the Interior Bureau of Indian Affairs

Reach Name: **Sprague River #5**

Scale: 1:24,000