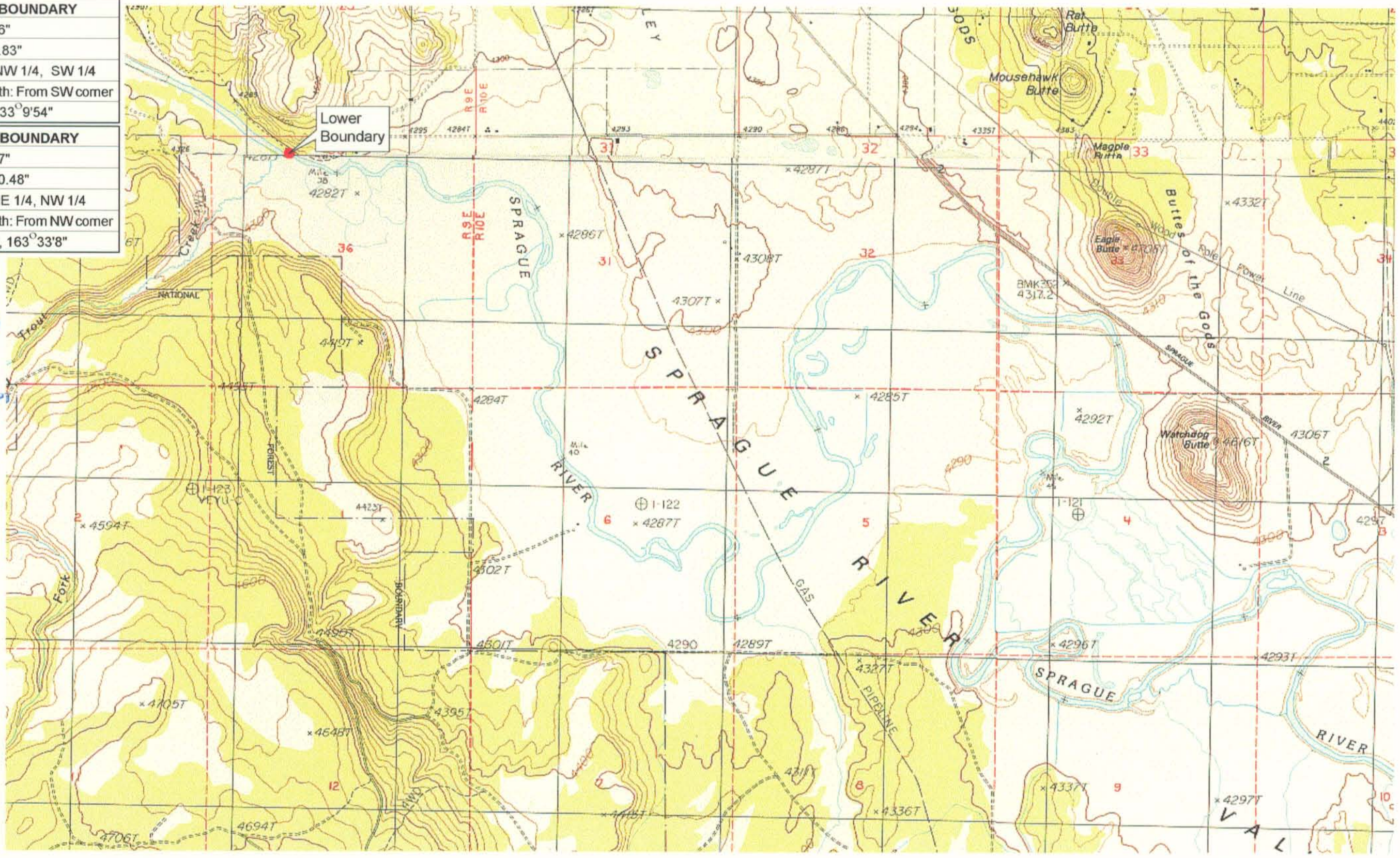


UPPER REACH BOUNDARY
Latitude: 42° 27' 38.36"
Longitude: 121° 17' 9.83"
T 36S, R12E, S 10, NW 1/4, SW 1/4
Distance/Bearing/Azimuth: From SW corner N 33° 9' 54" E, 541.8m, 33° 9' 54"
LOWER REACH BOUNDARY
Latitude: 42° 29' 59.77"
Longitude: 121° 35' 50.48"
T 35S, R 9E, S 36, NE 1/4, NW 1/4
Distance/Bearing/Azimuth: From NW corner S 16° 26' 52" E, 464.7m, 163° 33' 8"



RECEIVED
 MAR 01 1999
 WATER RESOURCES DEPT
 SALEM, OREGON

Source: USGS 7.5 Minute
 Quad: Beatty, Sprague River
 East, Buttes of the Gods,
 Sprague River West.

Vertical Datum: National
 Geodetic Vertical Datum of
 1929.

Horizontal Datum: 1927 North
 American Datum.

KLAMATH ADJUDICATION
CLAIM 645 PAGE # **8**

Reach boundaries: Sycan River to Trout Creek.
 Plate 4 of 4.

Klamath Basin Water Rights Claim Map
 Department of the Interior Bureau of Indian Affairs
 Reach Name: **Sprague River #5**
 Scale: 1:24,000