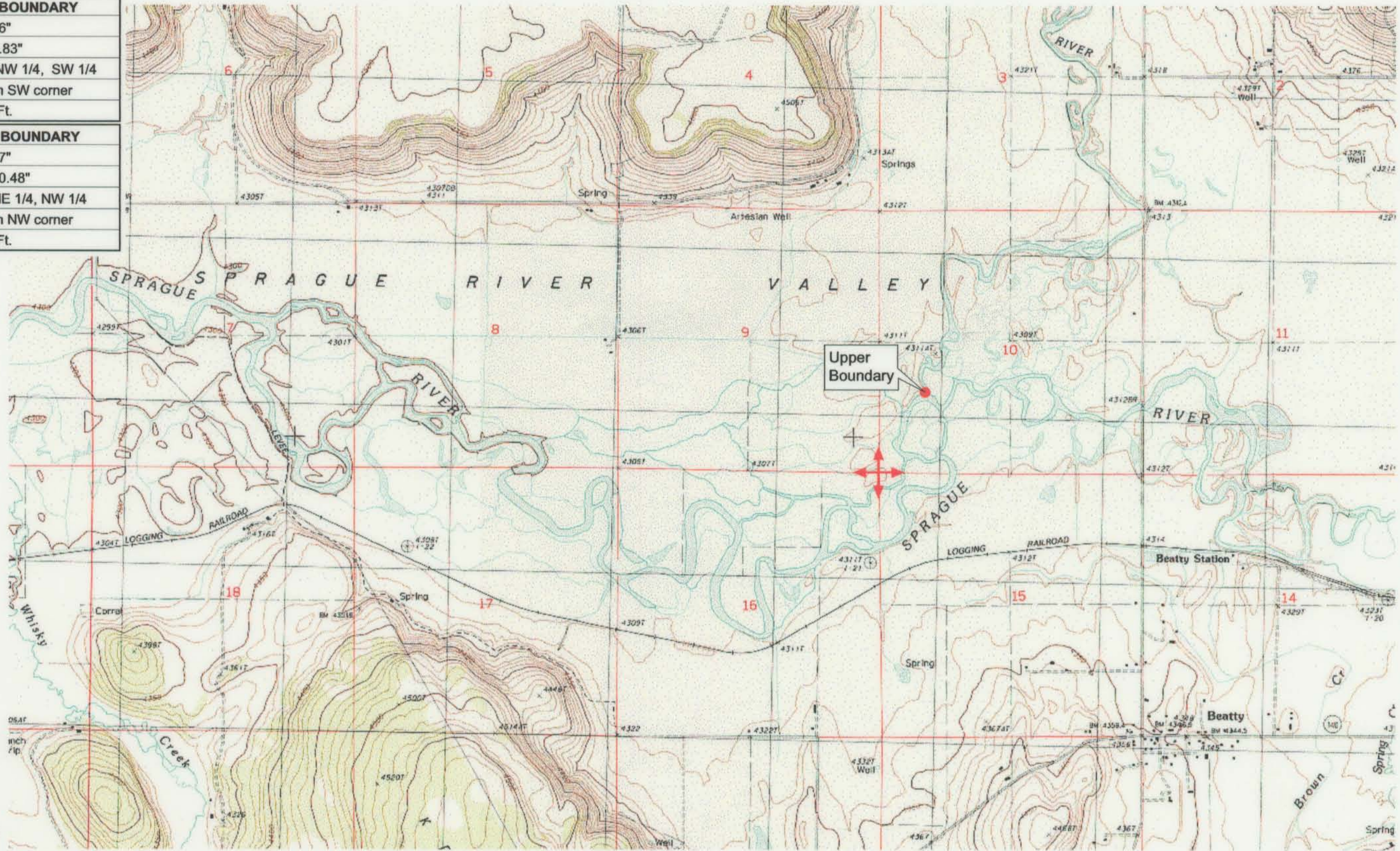


UPPER REACH BOUNDARY
Latitude: 42° 27' 38.36"
Longitude: 121° 17' 9.83"
T 36S, R12E, S 10, NW 1/4, SW 1/4
Bearing/Distance: From SW corner N 33° 9' 54" E, 1,777.7 Ft.
LOWER REACH BOUNDARY
Latitude: 42° 29' 59.77"
Longitude: 121° 35' 50.48"
T 35S, R 9E, S 36, NE 1/4, NW 1/4
Bearing/Distance: From NW corner S 73° 33' 8" E, 1,524.6 Ft.



Source: USGS 7.5 Minute
 Quad: Beatty, Sprague River
 East, Buttes of the Gods,
 Sprague River West.

Vertical Datum: National
 Geodetic Vertical Datum of
 1929.

Horizontal Datum: 1927 North
 American Datum.

KLAMATH ADJUDICATION
 CLAIM # **645** PAGE # **020**

Reach boundaries: Sycan River to Trout Creek.
 Plate 1 of 4.

RECEIVED

OCT 01 1999

WATER RESOURCES DEPT.
 SALEM, OREGON

Klamath Basin Water Rights Claim #645
 Department of the Interior Bureau of Indian Affairs
 Reach Name: **Sprague River #5 (SP 5)**
 Scale: 1:24,000 (Amended)

\\Lafayette\Graphics\Projects\GIS\BIA\60177.26\Topo\1117gis3.fh8