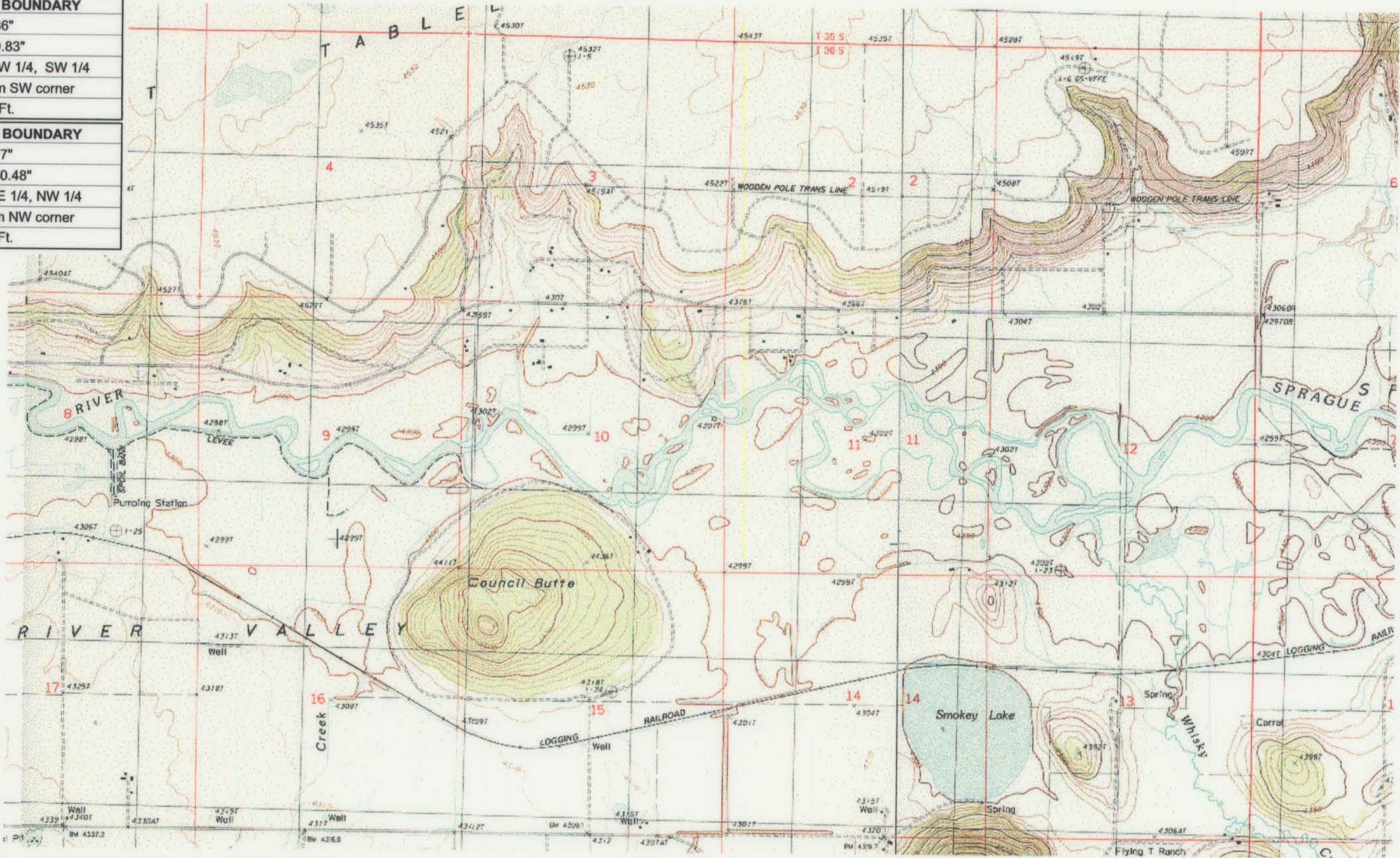


<b>UPPER REACH BOUNDARY</b>
Latitude: 42° 27' 38.36"
Longitude: 121° 17' 9.83"
T 36S, R12E, S 10, NW 1/4, SW 1/4
Bearing/Distance: From SW corner N 33° 9' 54" E, 1,777.7 Ft.
<b>LOWER REACH BOUNDARY</b>
Latitude: 42° 29' 59.77"
Longitude: 121° 35' 50.48"
T 35S, R 9E, S 36, NE 1/4, NW 1/4
Bearing/Distance: From NW corner S 73° 33' 8" E, 1,524.6 Ft.



Source: USGS 7.5 Minute Quad: Beatty, Sprague River East, Buttes of the Gods, Sprague River West.

Vertical Datum: National Geodetic Vertical Datum of 1929.

Horizontal Datum: 1927 North American Datum.

**KLAMATH ADJUDICATION**  
**CLAIM # 645** - PAGE # **021**

Reach: Sycan River to Trout Creek.  
 Plate 2 of 4.

**RECEIVED**  
 OCT 01 1999  
 WATER RESOURCES DEPT.  
 SALEM, OREGON

**Klamath Basin Water Rights Claim #645**  
 Department of the Interior Bureau of Indian Affairs  
 Reach Name: **Sprague River #5 (SP 5)**  
 Scale: 1:24,000 (Amended)

\\Lafayette\Graphics\Projects\GIS\BIA\60177.26\Topo\1117gis3.fh8