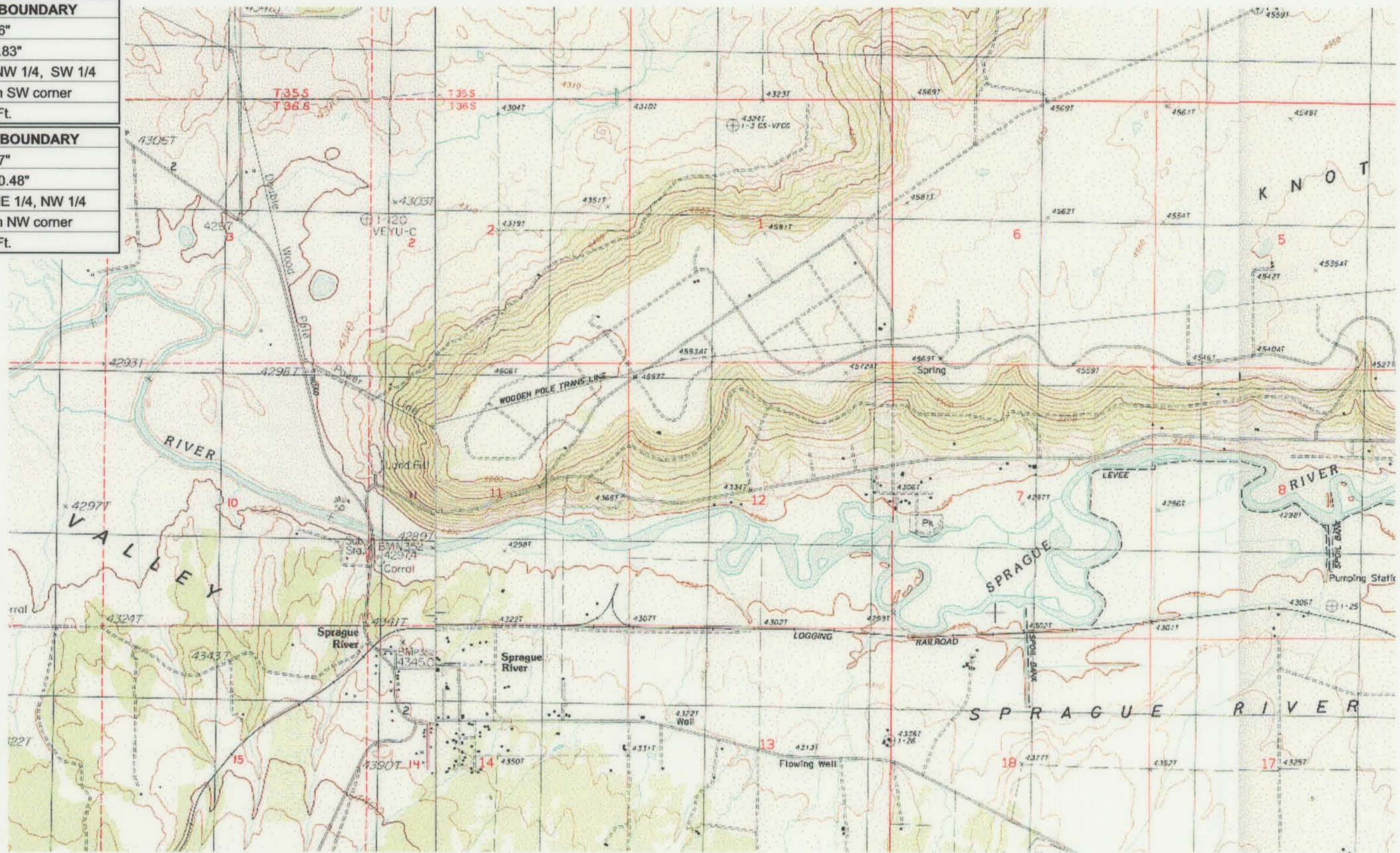


UPPER REACH BOUNDARY	
Latitude:	42° 27' 38.36"
Longitude:	121° 17' 9.83"
T 36S, R12E, S 10, NW 1/4, SW 1/4	
Bearing/Distance: From SW corner	
N 33° 9' 54" E, 1,777.7 Ft.	
LOWER REACH BOUNDARY	
Latitude:	42° 29' 59.77"
Longitude:	121° 35' 50.48"
T 35S, R 9E, S 36, NE 1/4, NW 1/4	
Bearing/Distance: From NW corner	
S 73° 33' 8" E, 1,524.6 Ft.	



Source: USGS 7.5 Minute Quad: Beatty, Sprague River East, Buttes of the Gods, Sprague River West.

Vertical Datum: National Geodetic Vertical Datum of 1929.
 Horizontal Datum: 1927 North American Datum.

KLAMATH ADJUDICATION
CLAIM # 645 PAGE # 022

Reach boundaries: Sycan River to Trout Creek.
 Plate 3 of 4.

RECEIVED
 OCT 01 1999
 WATER RESOURCES DEPT.
 SALEM, OREGON

Klamath Basin Water Rights Claim #645
 Department of the Interior Bureau of Indian Affairs
 Reach Name: **Sprague River #5 (SP 5)**
 Scale: 1:24,000 (Amended)
 \\Lafayette\Graphics\Projects\GIS\BIA\60177.26\Topo\1117gis3.fn8