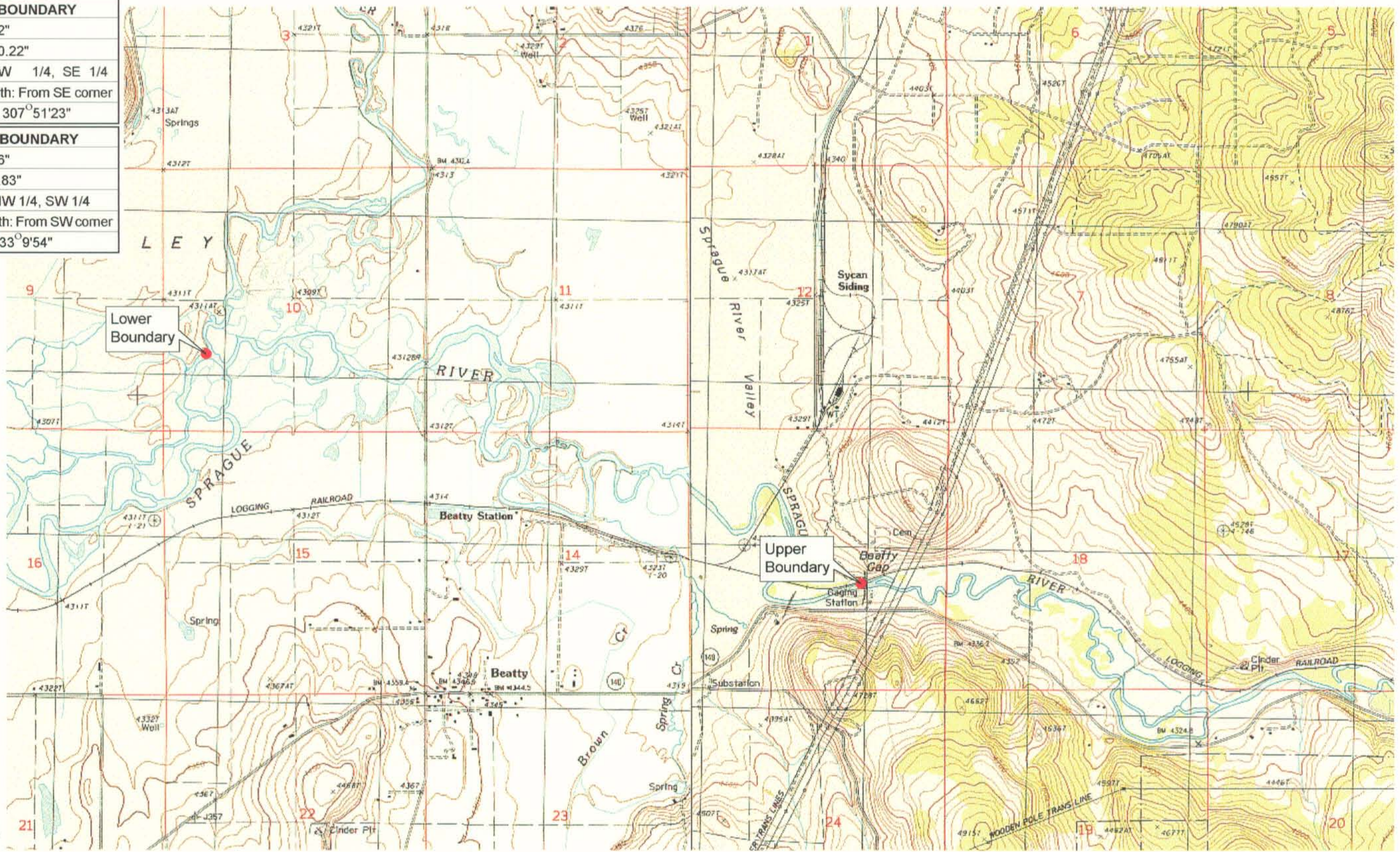


UPPER REACH BOUNDARY
Latitude: 42° 26' 45.02"
Longitude: 121° 14' 10.22"
T 36S, R 12E, S 13, NW 1/4, SE 1/4
Distance/Bearing/Azimuth: From SE corner N 52° 8' 37" W, 807.0m, 307° 51' 23"
LOWER REACH BOUNDARY
Latitude: 42° 27' 38.36"
Longitude: 121° 17' 9.83"
T 36S, R 12E, S 10, NW 1/4, SW 1/4
Distance/Bearing/Azimuth: From SW corner N 33° 9' 54" E, 541.8m, 33° 9' 54"

RECEIVED
MAR 01 1999
WATER RESOURCES DEPT.
SALEM, OREGON



Source: USGS 7.5 Minute
Quad: Beatty, Ferguson Mtn.
Vertical Datum: National
Geodetic Vertical Datum of
1929.
Horizontal Datum: 1927 North
American Datum.

KLAMATH ADJUDICATION
CLAIM # **646** PAGE # **04**

Reach boundaries: USGS Gage Sprague River near Beatty (11497500) to Sycan River.
Plate 1 of 1.

Klamath Basin Water Rights Claim Map
Department of the Interior Bureau of Indian Affairs
Reach Name: **Sprague River #6**
Scale: 1:24,000

f:\60177.26\master\graphics\1117gis3.lhs