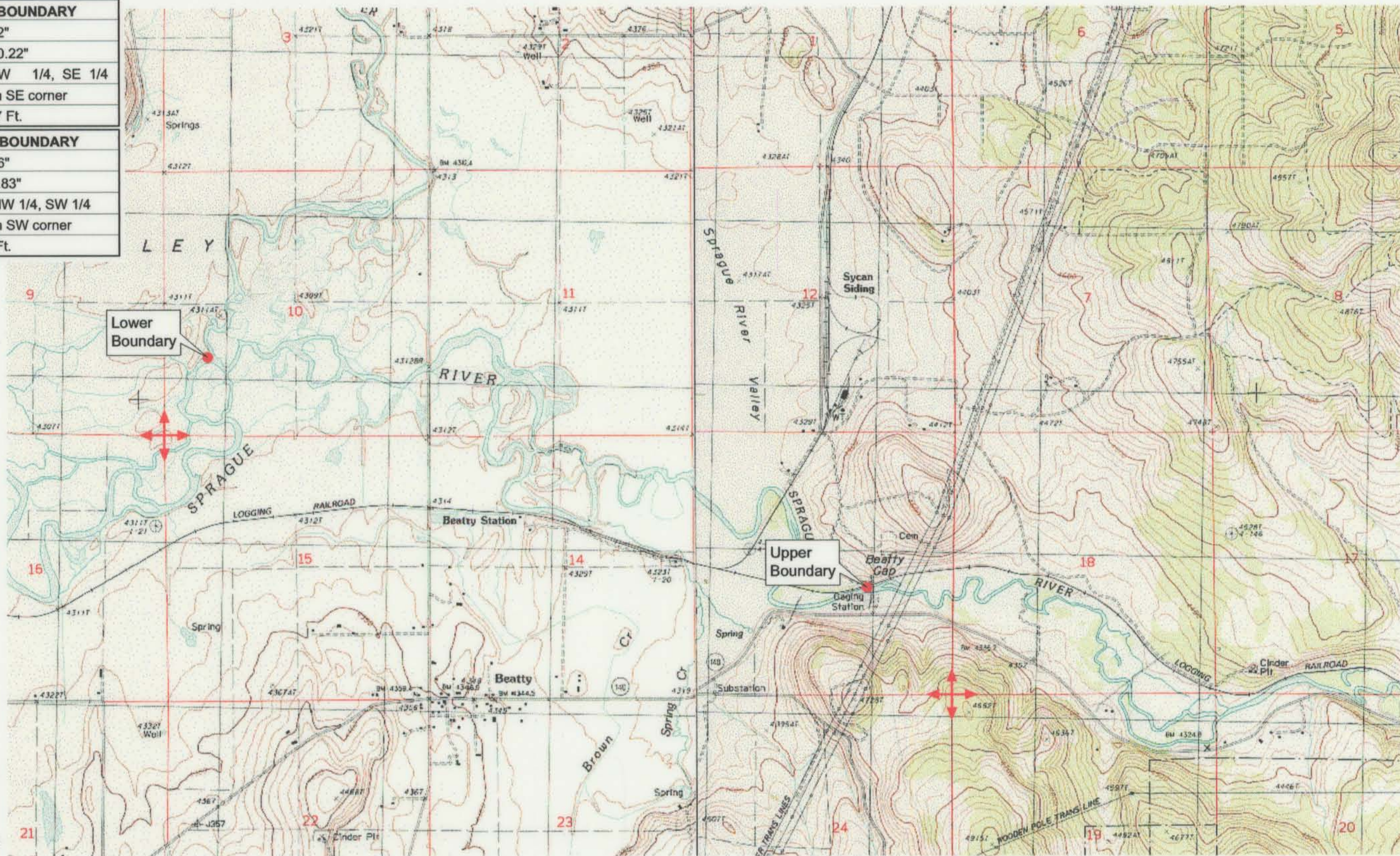


UPPER REACH BOUNDARY
Latitude: 42° 26' 45.02"
Longitude: 121° 14' 10.22"
T 36S, R 12E, S 13, NW 1/4, SE 1/4
Bearing/Distance: From SE corner N 37° 51' 23" W, 2,647.7 Ft.
LOWER REACH BOUNDARY
Latitude: 42° 27' 38.36"
Longitude: 121° 17' 9.83"
T 36S, R 12E, S 10, NW 1/4, SW 1/4
Bearing/Distance: From SW corner N 33° 9' 54" E, 1,777.7 Ft.



Source: USGS 7.5 Minute
Quad: Beatty, Ferguson Mtn.

Vertical Datum: National
Geodetic Vertical Datum of
1929.
Horizontal Datum: 1927 North
American Datum.

KLAMATH ADJUDICATION
CLAIM # 646 PAGE # 015

Reach boundaries: USGS Gage Sprague River near Beatty (11497500) to ~~Beatty~~ **Beatty** ver.
Plate 1 of 1.

OCT 01 1999

WATER RESOURCES DEPT.
SALEM, OREGON

Klamath Basin Water Rights Claim #646
Department of the Interior Bureau of Indian Affairs
Reach Name: **Sprague River #6 (SP 6)**
Scale: 1:24,000 (Amended)

\\Lafayette\Graphics\Projects\GIS\BIA\60177.26\Topo\1117gis3.fn8