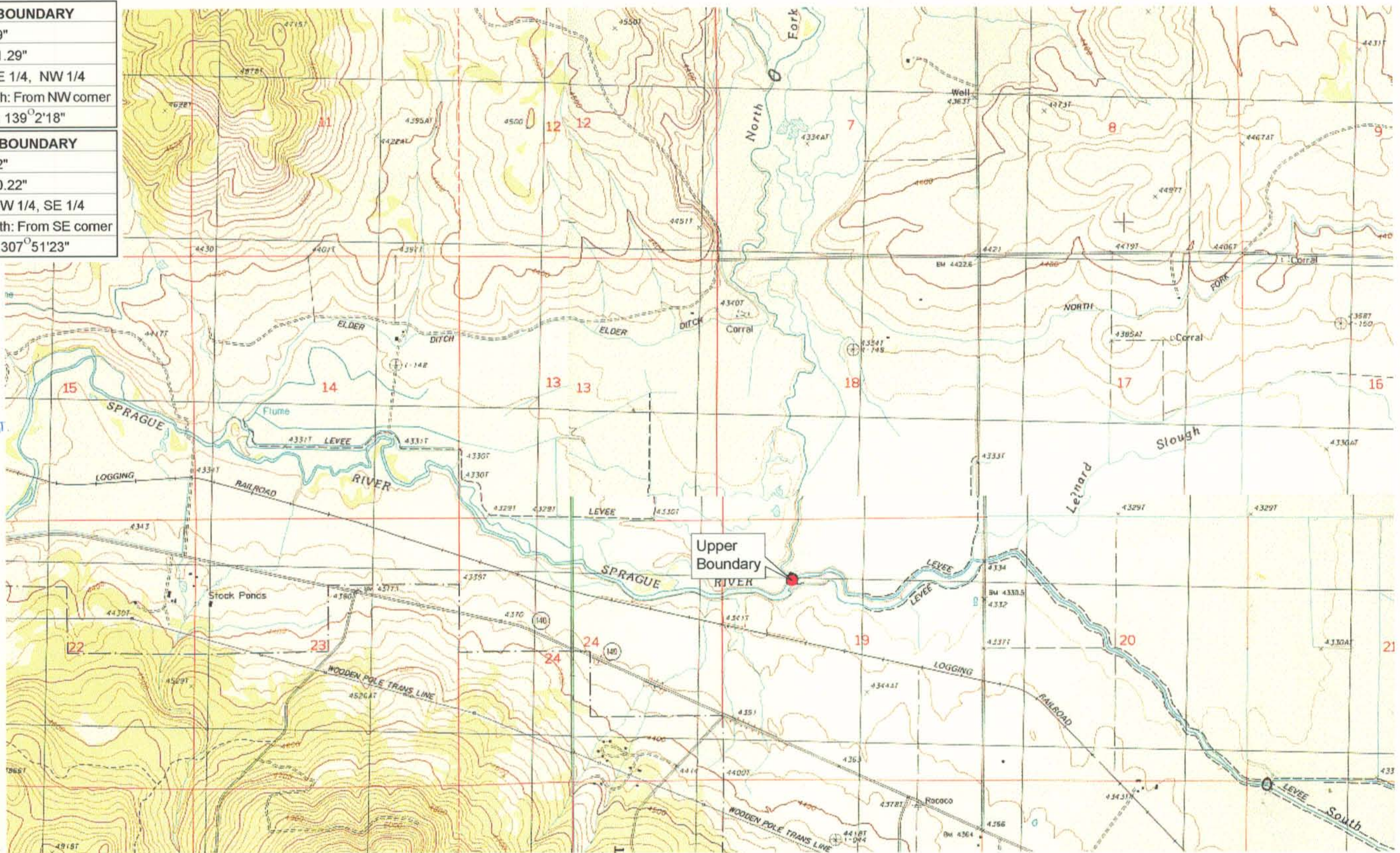


UPPER REACH BOUNDARY
Latitude: 42° 26' 18.89"
Longitude: 121° 06' 31.29"
T 36S, R 14E, S 19, NE 1/4, NW 1/4
Distance/Bearing/Azimuth: From NW corner S 40° 57' 42" E, 610.1m, 139° 2' 18"
LOWER REACH BOUNDARY
Latitude: 42° 26' 45.02"
Longitude: 121° 14' 10.22"
T 36S, R 12E, S 13, NW 1/4, SE 1/4
Distance/Bearing/Azimuth: From SE corner N 52° 8' 37" W, 807.0m, 307° 51' 23"



RECEIVED

MAR 01 1999

WATER RESOURCES DEPT.
SALEM, OREGON



Source: USGS 7.5 Minute
Quad: Ferguson Mtn., Bly.

Vertical Datum: National
Geodetic Vertical Datum of
1929.
Horizontal Datum: 1927 North
American Datum.

KLAMATH ADJUDICATION

CLAIM 647 PAGE # 05

Reach boundaries: North Fork/South Fork Sprague River confluence to Kirk Spring.
Plate 1 of 2.

Klamath Basin Water Rights Claim Map
Department of the Interior Bureau of Indian Affairs
Reach Name: Sprague River #7
Scale: 1:24,000

f:\60177.26\master\graphics\1117gis3.fh5