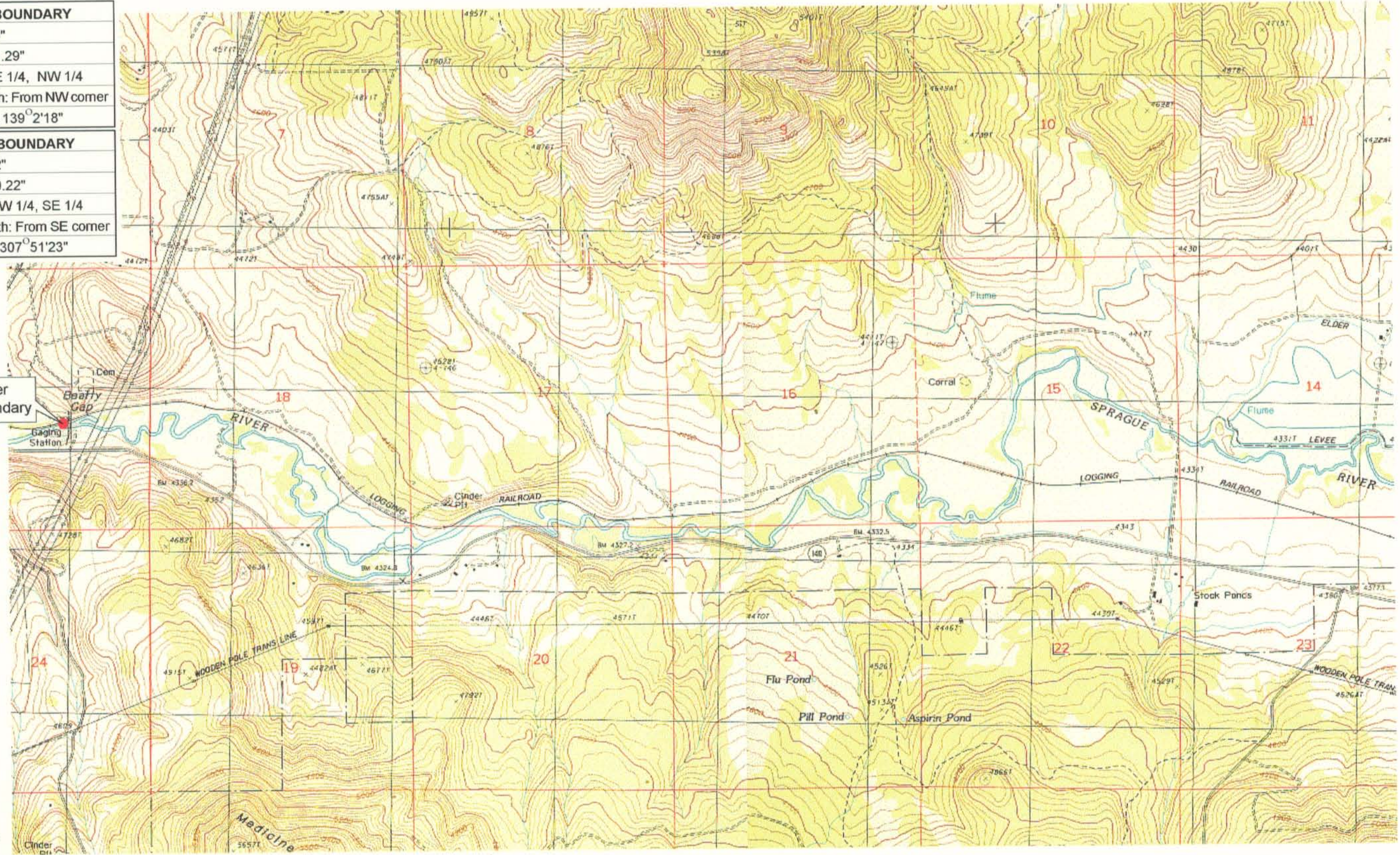


UPPER REACH BOUNDARY	
Latitude:	42° 26' 18.89"
Longitude:	121° 06' 31.29"
T 36S, R 14E, S 19, NE 1/4, NW 1/4	
Distance/Bearing/Azimuth: From NW corner S 40° 57' 42" E, 610.1m, 139° 2' 18"	
LOWER REACH BOUNDARY	
Latitude:	42° 26' 45.02"
Longitude:	121° 14' 10.22"
T 36S, R 12E, S 13, NW 1/4, SE 1/4	
Distance/Bearing/Azimuth: From SE corner N 52° 8' 37" W, 807.0m, 307° 51' 23"	

RECEIVED
MAR 01 1999
WATER RESOURCES DEPT
SALEM, OREGON



Source: USGS 7.5 Minute
Quad: Ferguson Mtn., Bly.
Vertical Datum: National
Geodetic Vertical Datum of
1929.
Horizontal Datum: 1927 North
American Datum.

KLAMATH ADJUDICATION
CLAIM **647** PAGE # **06**

Reach boundaries: North Fork/South Fork Sprague River confluence to Kirk Spring.
Plate 2 of 2.

Klamath Basin Water Rights Claim Map
Department of the Interior Bureau of Indian Affairs
Reach Name: **Sprague River #7**
Scale: 1:24,000

f:\60177.26\master\graphics\1117gis3.lh5