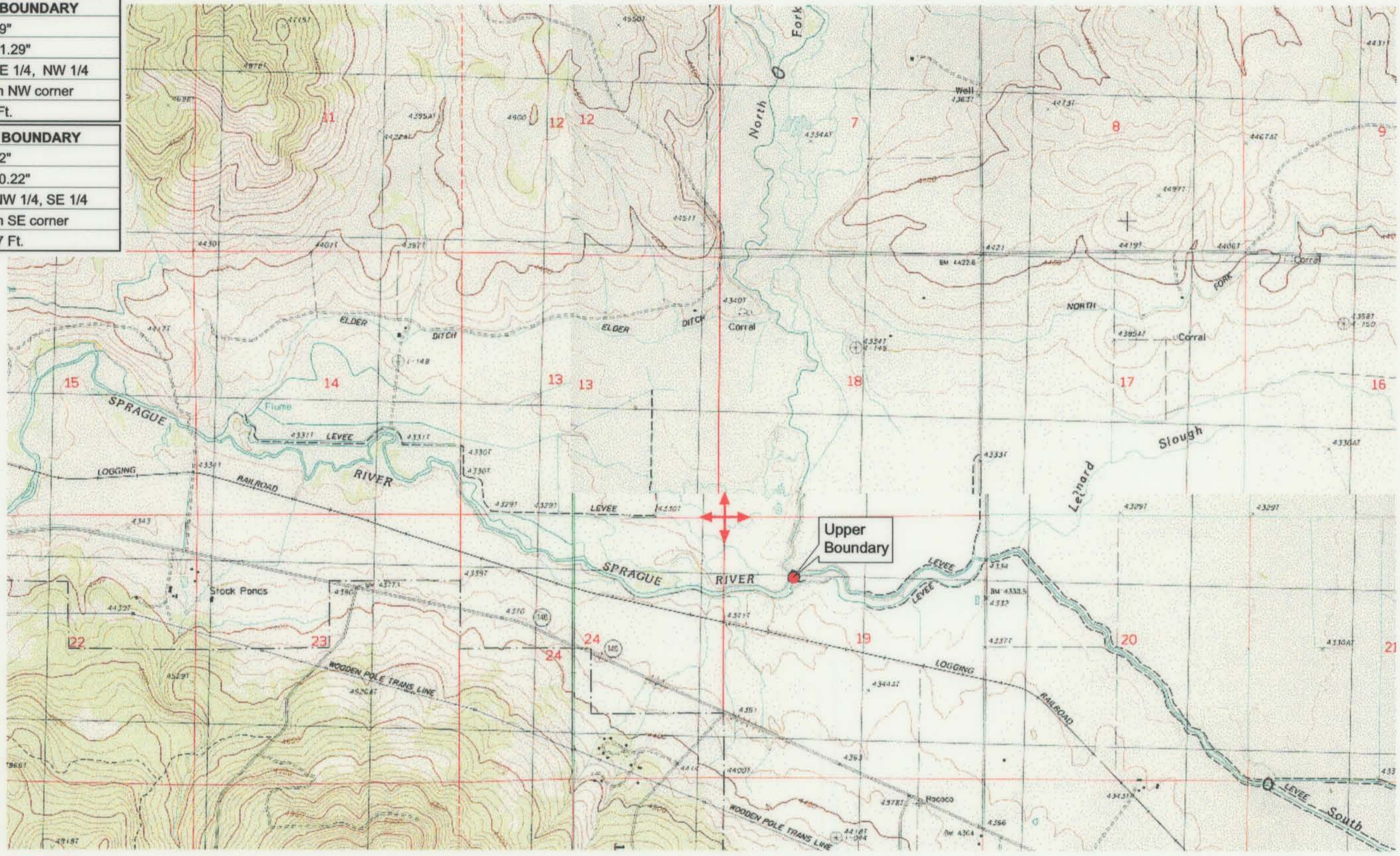


UPPER REACH BOUNDARY
Latitude: 42° 26' 18.89"
Longitude: 121° 06' 31.29"
T 36S, R 14E, S 19, NE 1/4, NW 1/4
Bearing/Distance: From NW corner
S 49° 2' 18" E, 2,001.6 Ft.
LOWER REACH BOUNDARY
Latitude: 42° 26' 45.02"
Longitude: 121° 14' 10.22"
T 36S, R 12E, S 13, NW 1/4, SE 1/4
Bearing/Distance: From SE corner
N 37° 51' 23" W, 2,647.7 Ft.



Source: USGS 7.5 Minute Quad: Ferguson Mtn., Bly.
 Vertical Datum: National Geodetic Vertical Datum of 1929.
 Horizontal Datum: 1927 North American Datum.

KLAMATH ADJUDICATION
 CLAIM # 647 PAGE # 017

RECEIVED
 OCT 01 1999

WATER RESOURCES DEPT.
 SALEM, OREGON

Reach boundaries: North Fork/South Fork Sprague River confluence to Kirk Spring.
 Plate 1 of 2.

Klamath Basin Water Rights Claim #647
 Department of the Interior Bureau of Indian Affairs
 Reach Name: **Sprague River #7 (SP 7)**
 Scale: 1:24,000 (Amended)

\\Lafayette\Graphics\Projects\GIS\BIA\60177.26\Topo\1117gis3.fh8