

<b>UPPER REACH BOUNDARY</b>
Latitude: 42° 29' 13.53"
Longitude: 121° 37' 6.61"
T 35S, R 9E, S 35, SW 1/4, SW 1/4
Distance/Bearing/Azimuth: From SW corner N 67° 52' 10" E, 373.8m, 67° 52' 10"
<b>LOWER REACH BOUNDARY</b>
Latitude: 42° 29' 59.77"
Longitude: 121° 35' 50.48"
T 35S, R 9E, S 36, NE 1/4, NW 1/4
Distance/Bearing/Azimuth: From NW corner S 16° 26' 52" E, 464.7m, 163° 33' 8"

RECEIVED

MAR 01 1999

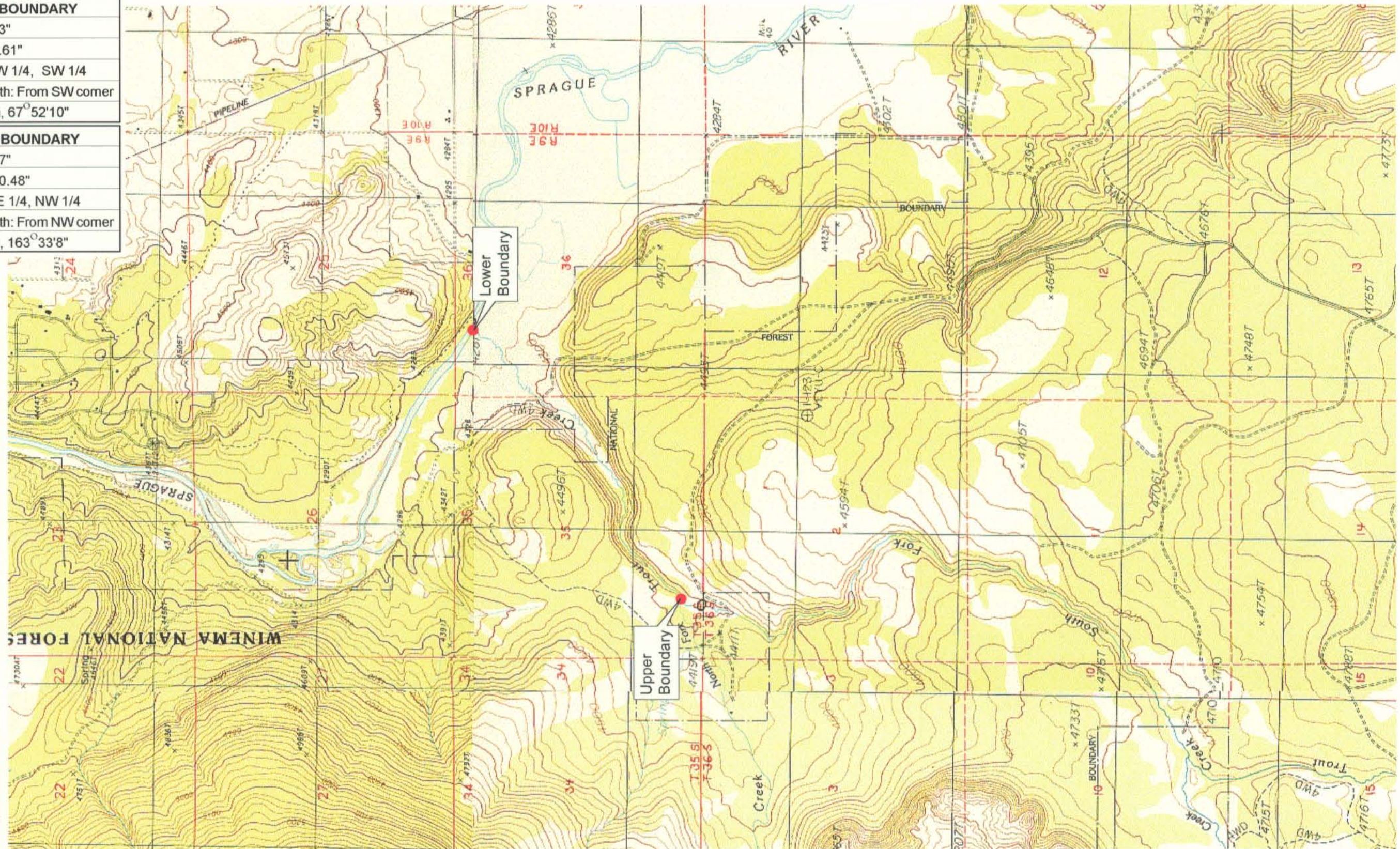
WATER RESOURCES DEPT  
SALEM, OREGON



Source: USGS 7.5 Minute  
Quad: Sprague River West.

Vertical Datum: National  
Geodetic Vertical Datum of  
1929.

Horizontal Datum: 1927 North  
American Datum.



**KLAMATH ADJUDICATION**

CLAIM # 648 PAGE # 04

Reach: Trout Creek.  
Plate 1 of 1.

**Klamath Basin Water Rights Claim Map**

Department of the Interior Bureau of Indian Affairs

Reach Name: **Sprague River #8**

Scale: 1:24,000