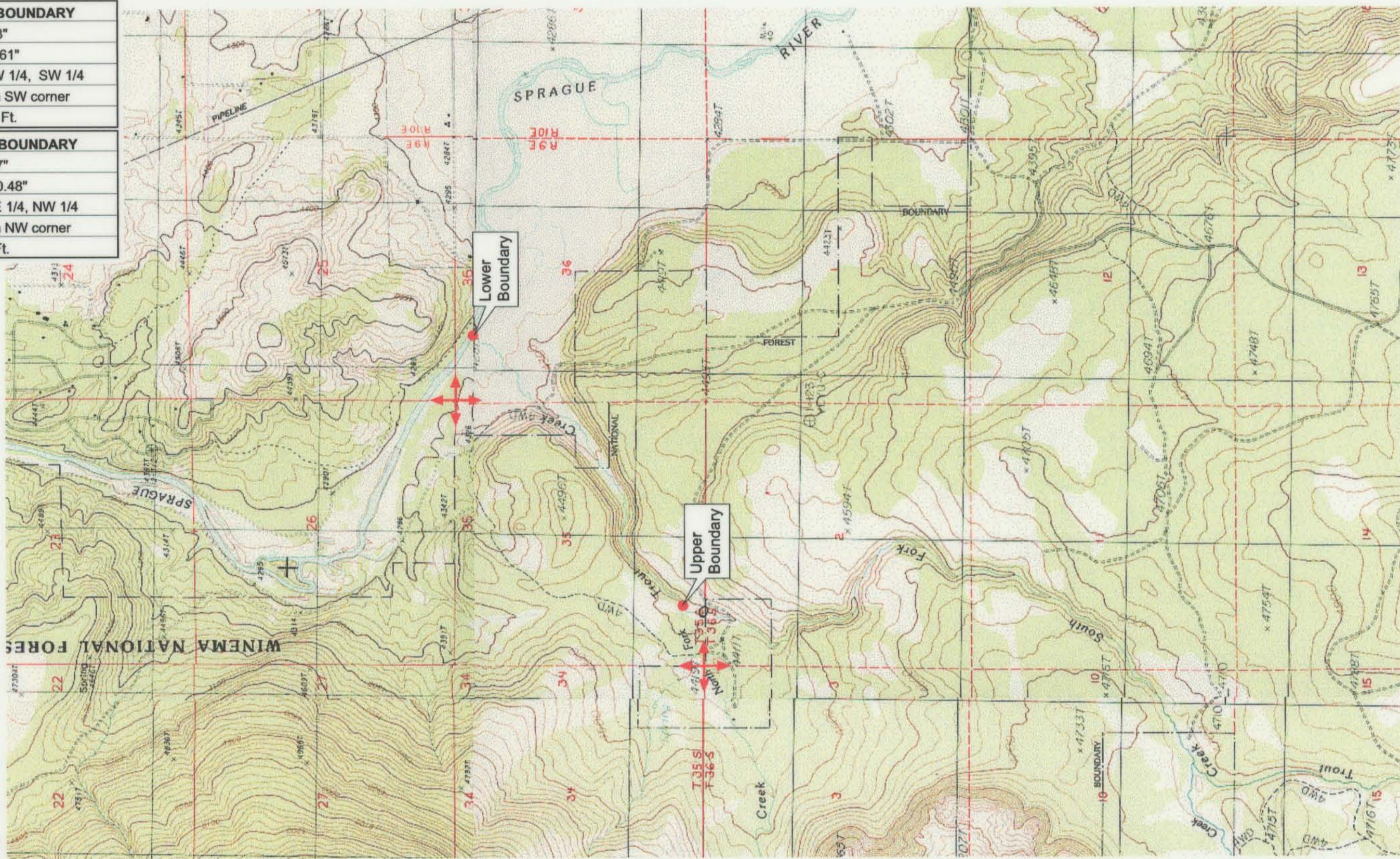


<b>UPPER REACH BOUNDARY</b>
Latitude: 42° 29' 13.53"
Longitude: 121° 37' 6.61"
T 35S, R 9E, S 35, SW 1/4, SW 1/4
Bearing/Distance: From SW corner
N 67° 52' 10" E, 1,226.5 Ft.
<b>LOWER REACH BOUNDARY</b>
Latitude: 42° 29' 59.77"
Longitude: 121° 35' 50.48"
T 35S, R 9E, S 36, NE 1/4, NW 1/4
Bearing/Distance: From NW corner
S 73° 33' 8" E, 1,524.6 Ft.



Source: USGS 7.5 Minute  
 Quad: Sprague River West,  
 Buttes of the Gods.

Vertical Datum: National  
 Geodetic Vertical Datum of  
 1929.

Horizontal Datum: 1927 North  
 American Datum.

**KLAMATH ADJUDICATION**  
 CLAIM # **648** PAGE # **015**

Reach: Trout Creek.  
 Plate 1 of 1.

**RECEIVED**  
 OCT 01 1999  
 WATER RESOURCES DEPT.  
 SALEM, OREGON

**Klamath Basin Water Rights Claim #648**  
 Department of the Interior Bureau of Indian Affairs  
 Reach Name: **Sprague River #8 (SP 8)**  
 Scale: 1:24,000 (Amended)

\\Lafayette\Graphics\Projects\GIS\BIA\60177.26\Topo\1117gis3.fh8