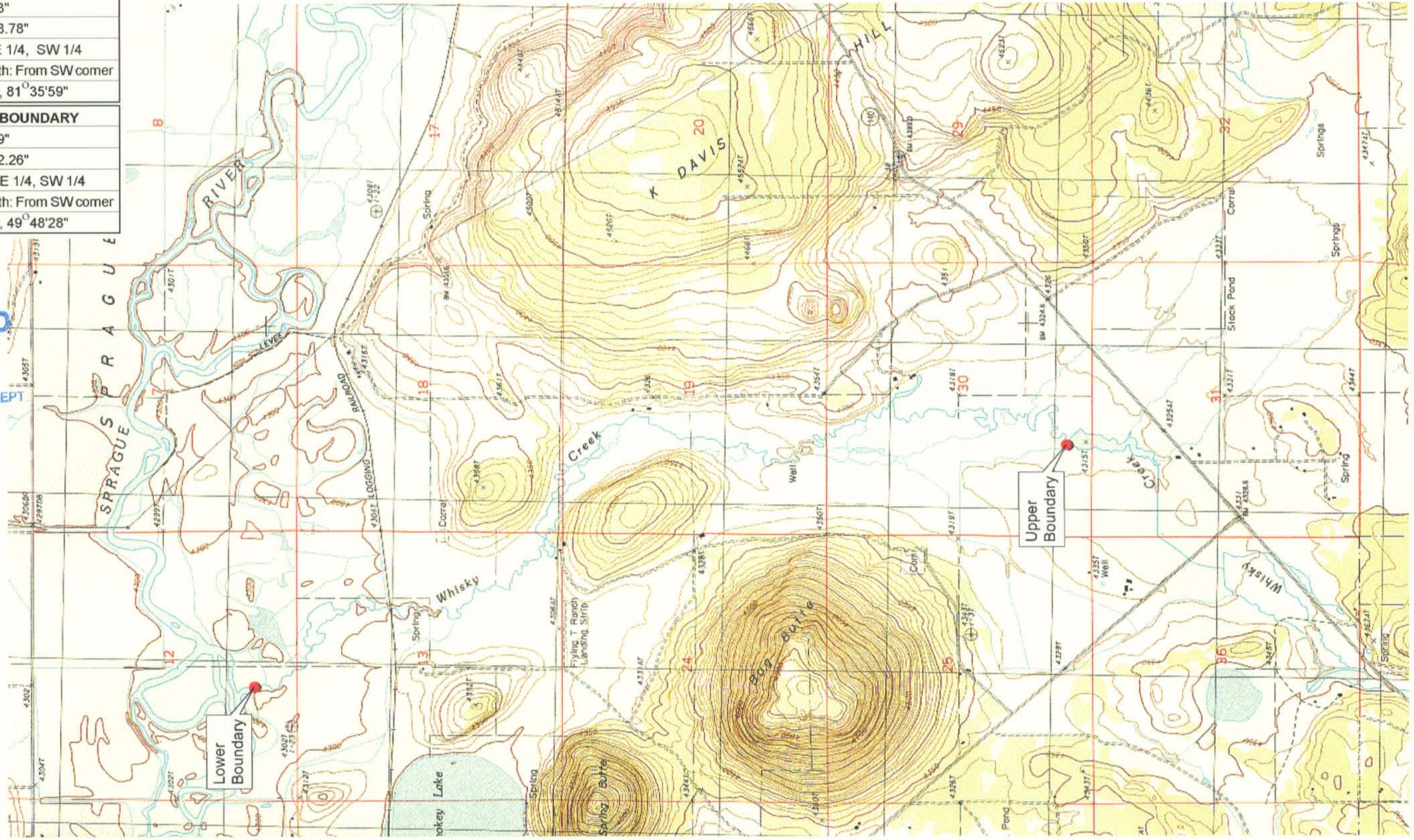


| |
|--|
| UPPER REACH BOUNDARY |
| Latitude: 42° 24' 45.63" |
| Longitude: 121° 20' 28.78" |
| T 36S, R 12E, S30, SE 1/4, SW 1/4 |
| Distance/Bearing/Azimuth: From SW corner N 81° 35' 59" E, 608.7m, 81° 35' 59" |
| LOWER REACH BOUNDARY |
| Latitude: 42° 27' 25.99" |
| Longitude: 121° 21' 32.26" |
| T 36S, R 11E, S 12, SE 1/4, SW 1/4 |
| Distance/Bearing/Azimuth: From SW corner N 49° 48' 28" E, 576.8m, 49° 48' 28" |

RECEIVED

MAR 01 1999

WATER RESOURCES DEPT.
SALEM, OREGON



Source: USGS 7.5 Minute
Quad: Beatty.

Vertical Datum: National
Geodetic Vertical Datum of
1929.

Horizontal Datum: 1927 North
American Datum.

KLAMATH ADJUDICATION
CLAIM # 649 PAGE # 04

Reach: Whisky Creek.
Plate 1 of 1.

Klamath Basin Water Rights Claim Map
Department of the Interior Bureau of Indian Affairs
Reach Name: **Sprague River #9**
Scale: 1:24,000

f:\60177.26\master\graphics\1117gis3.th5