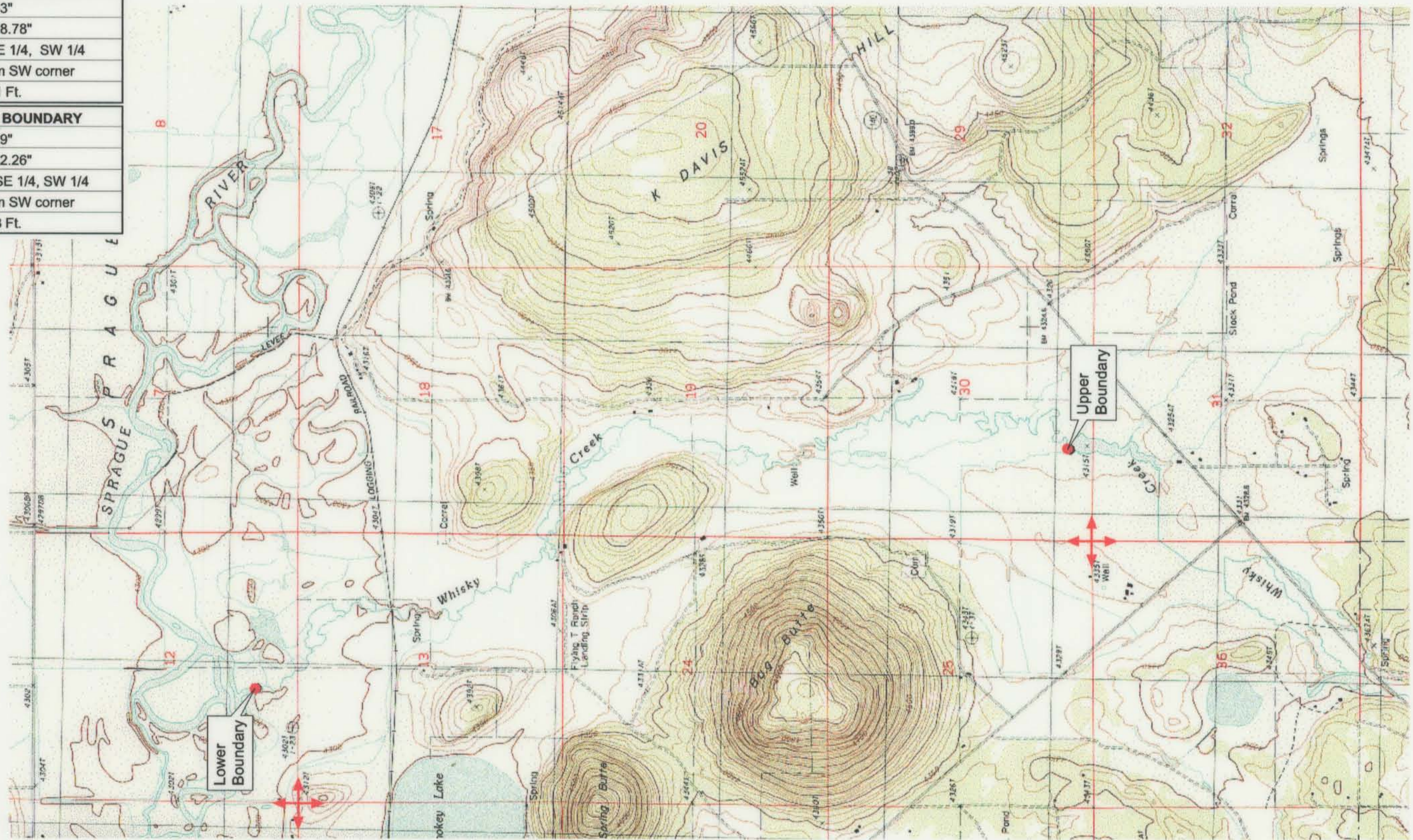


UPPER REACH BOUNDARY
Latitude: 42° 24' 45.63"
Longitude: 121° 20' 28.78"
T 36S, R 12E, S30, SE 1/4, SW 1/4
Bearing/Distance: From SW corner N 81° 35' 59" E, 1,997.1 Ft.
LOWER REACH BOUNDARY
Latitude: 42° 27' 25.99"
Longitude: 121° 21' 32.26"
T 36S, R 11E, S 12, SE 1/4, SW 1/4
Bearing/Distance: From SW corner N 49° 48' 28" E, 1,892.3 Ft.



Source: USGS 7.5 Minute Quad: Beatty.
 Vertical Datum: National Geodetic Vertical Datum of 1929.
 Horizontal Datum: 1927 North American Datum.

KLAMATH ADJUDICATION
CLAIM # 649 PAGE # 013

Reach: Whisky Creek.
 Plate 1 of 1.

RECEIVED
OCT 01 1999
 WATER RESOURCES DEPT.
 SALEM, OREGON

Klamath Basin Water Rights Claim #649
 Department of the Interior Bureau of Indian Affairs
 Reach Name: **Sprague River #9 (SP 9)**
 Scale: 1:24,000 (Amended)

\\Lafayette\Graphics\Projects\GIS\BIA\60177.26\Topo\1117gis3.fn8