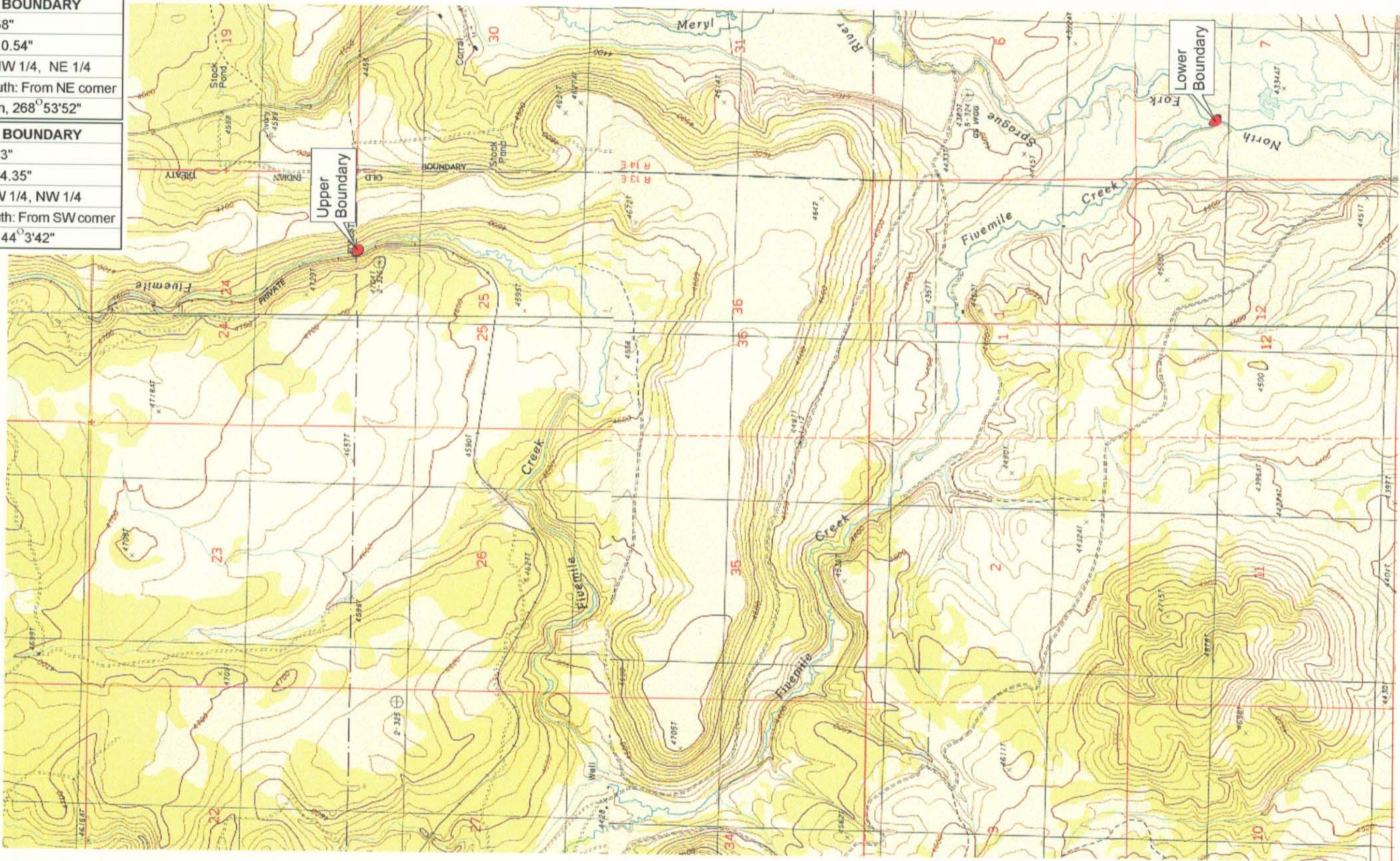


UPPER REACH BOUNDARY	
Latitude:	42° 30' 51.58"
Longitude:	121° 07' 10.54"
T 35S, R 13E, S 25, NW 1/4, NE 1/4	
Distance/Bearing/Azimuth: From NE corner S 88° 53' 52" W, 509.9m, 268° 53' 52"	
LOWER REACH BOUNDARY	
Latitude:	42° 27' 58.93"
Longitude:	121° 06' 34.35"
T 36S, R 14E, S 7, SW 1/4, NW 1/4	
Distance/Bearing/Azimuth: From SW corner N 44° 3' 42" E, 605.8m, 44° 3' 42"	



RECEIVED

MAR 01 1999

WATER RESOURCES DEPT.
SALEM, OREGON



Source: USGS 7.5 Minute
Quad: Bly, Rodeo Butte, Ponina
Butte, Ferguson Mtn.

Vertical Datum: National
Geodetic Vertical Datum of
1929.

Horizontal Datum: 1927 North
American Datum.

KLAMATH ADJUDICATION

CLAIM # **652** PAGE # **04**

Reach: Fivemile Creek (Lower Forest Service boundary to North Fork Sprague River).
Plate 1 of 1.

Klamath Basin Water Rights Claim Map
Department of the Interior Bureau of Indian Affairs
Reach Name: **Sprague River #12**
Scale: 1:24,000