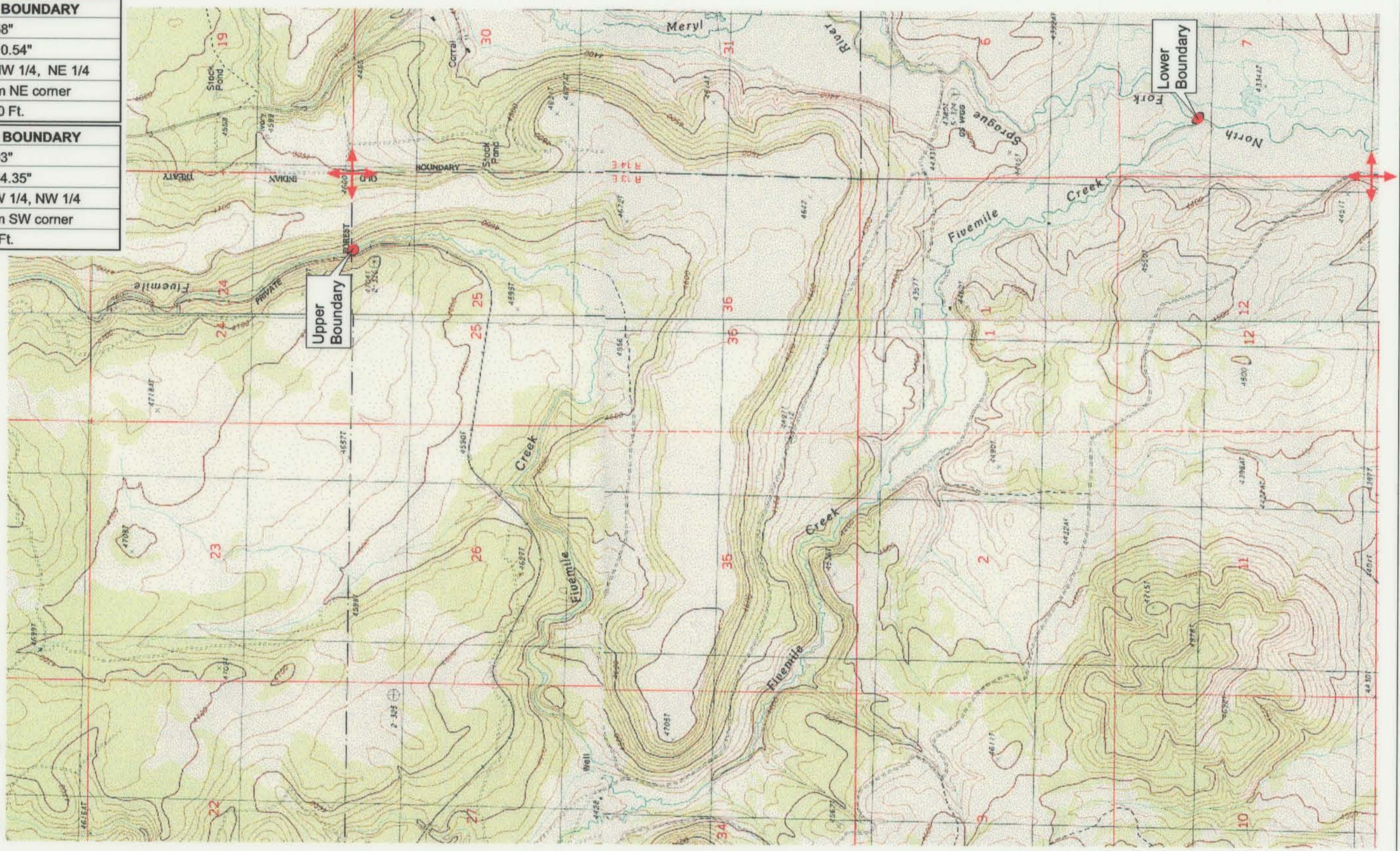


UPPER REACH BOUNDARY	
Latitude:	42° 30' 51.58"
Longitude:	121° 07' 10.54"
T 35S, R 13E, S 25, NW 1/4, NE 1/4	
Bearing/Distance: From NE corner S 88° 53' 52" W, 1,673.0 Ft.	
LOWER REACH BOUNDARY	
Latitude:	42° 27' 58.93"
Longitude:	121° 06' 34.35"
T 36S, R 14E, S 7, SW 1/4, NW 1/4	
Bearing/Distance: From SW corner N 44° 3' 42" E, 1,987.8 Ft.	



Source: USGS 7.5 Minute Quad: Bly, Rodeo Butte, Ponina Butte, Ferguson Mtn.

Vertical Datum: National Geodetic Vertical Datum of 1929.
Horizontal Datum: 1927 North American Datum.

KLAMATH ADJUDICATION
CLAIM # **652** PAGE # **015**

Reach: Fivemile Creek (Lower Forest Service boundary to North Fork Sprague River).
Plate 1 of 1.

RECEIVED
OCT 01 1999
WATER RESOURCES DEPT.
SALEM, OREGON

Klamath Basin Water Rights Claim #652
Department of the Interior Bureau of Indian Affairs
Reach Name: Sprague River #12 (SP 12)
Scale: 1:24,000 (Amended)

\\Lafayette\Graphics\Projects\GIS\BIA\60177.26\Topo\1117gis3.fh8