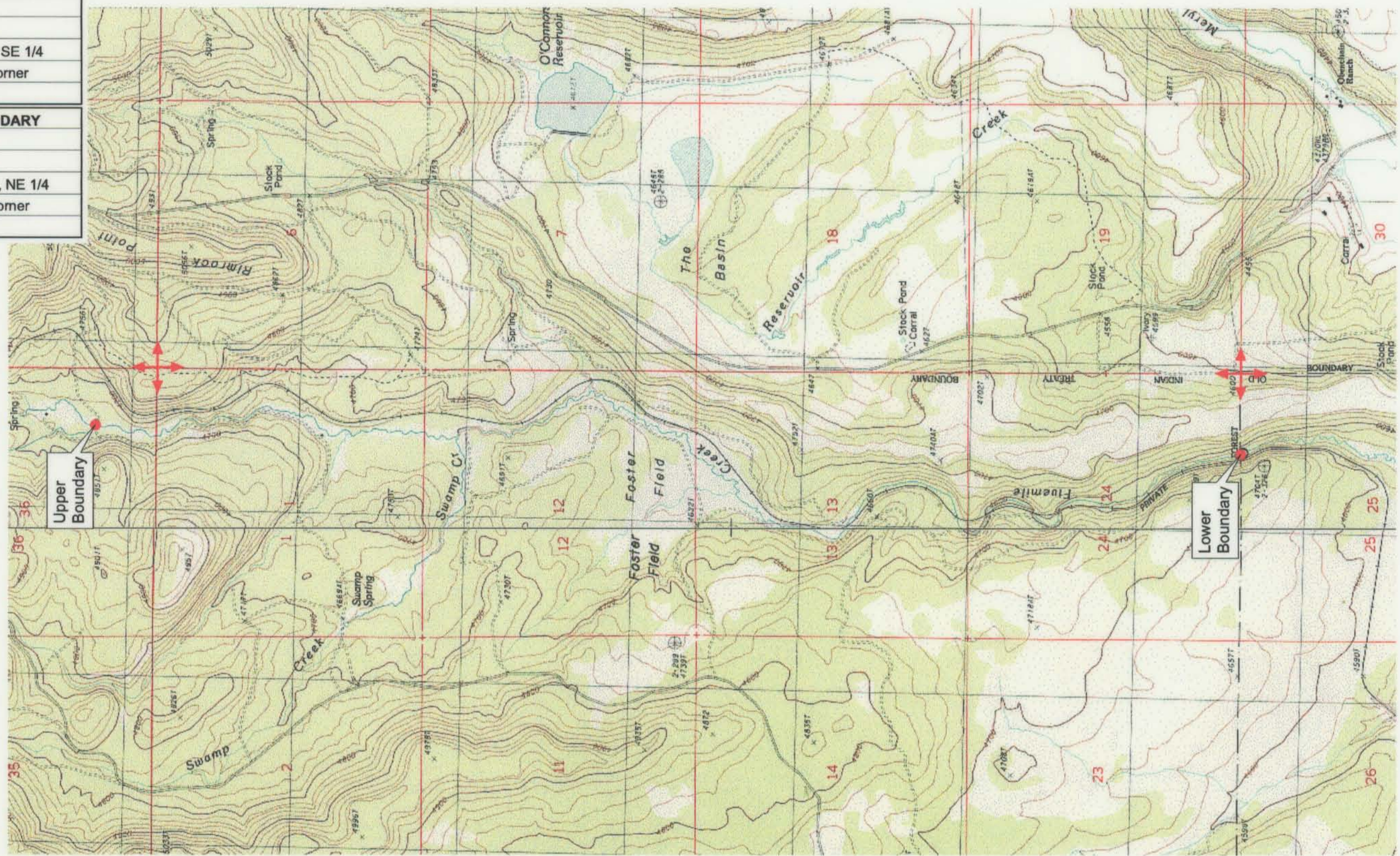


UPPER REACH BOUNDARY
Latitude: 42° 34' 33.14"
Longitude: 121° 07' 2.86"
T 34S, R 13E, S 36, SE 1/4, SE 1/4
Bearing/Distance: From SE corner N 40° 12' 00" W, 1,705.3 Ft.
LOWER REACH BOUNDARY
Latitude: 42° 30' 51.58"
Longitude: 121° 07' 10.54"
T 35S, R 13E, S 25, NW 1/4, NE 1/4
Bearing/Distance: From NE corner S 88° 53' 52" W, 1,673.0 Ft.



Source: USGS 7.5 Minute
 Quad: Rodeo Butte, Ponina
 Butte.
 Vertical Datum: National
 Geodetic Vertical Datum of
 1929.
 Horizontal Datum: 1927 North
 American Datum.

KLAMATH ADJUDICATION
 CLAIM # **653** PAGE # **015**

Reach: Fivemile Creek (Headwaters to Forest Service boundary).
 Plate 1 of 1.

RECEIVED
 OCT 01 1999
 WATER RESOURCES DEPT.
 SALEM, OREGON

Klamath Basin Water Rights Claim #653
 Department of the Interior Bureau of Indian Affairs
 Reach Name: **Sprague River #13 (SP 13)**
 Scale: 1:24,000 (Amended)

\\Lafayette\Graphics\Projects\GIS\BIA\60177.26\Topo\1117gis3.th8