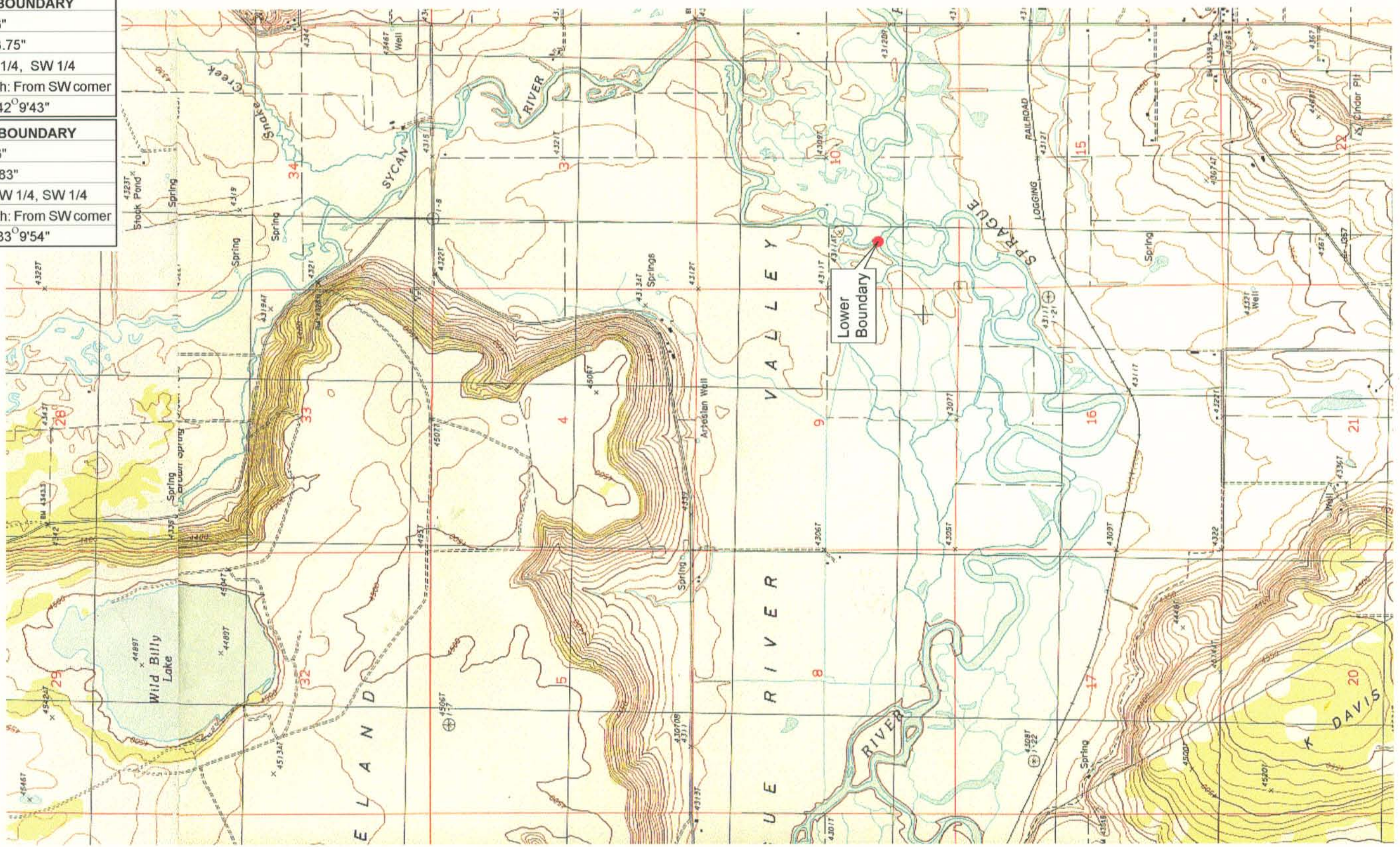


<b>UPPER REACH BOUNDARY</b>
Latitude: 42° 33' 44.96"
Longitude: 121° 19' 23.75"
T 35S, R 12E, S 5, NE 1/4, SW 1/4
Distance/Bearing/Azimuth: From SW corner N 42° 9' 43" E, 636.2m, 42° 9' 43"
<b>LOWER REACH BOUNDARY</b>
Latitude: 42° 27' 38.36"
Longitude: 121° 17' 9.83"
T 36S, R 12E, S 10, NW 1/4, SW 1/4
Distance/Bearing/Azimuth: From SW corner N 33° 9' 54" E, 541.8m, 33° 9' 54"



RECEIVED

MAR 01 1999

WATER RESOURCES DEPT.  
SALEM, OREGON



Source: USGS 7.5 Minute  
Quad: Spodue Mtn., Beatty.

Vertical Datum: National  
Geodetic Vertical Datum of  
1929.

Horizontal Datum: 1927 North  
American Datum.

**KLAMATH ADJUDICATION**

CLAIM **658** PAGE # **06**

Reach boundaries: Blue Creek to Snake Creek.  
Plate 2 of 2.

**Klamath Basin Water Rights Claim Map**

Department of the Interior Bureau of Indian Affairs

Reach Name: **Sycan River #1**

Scale: 1:24,000