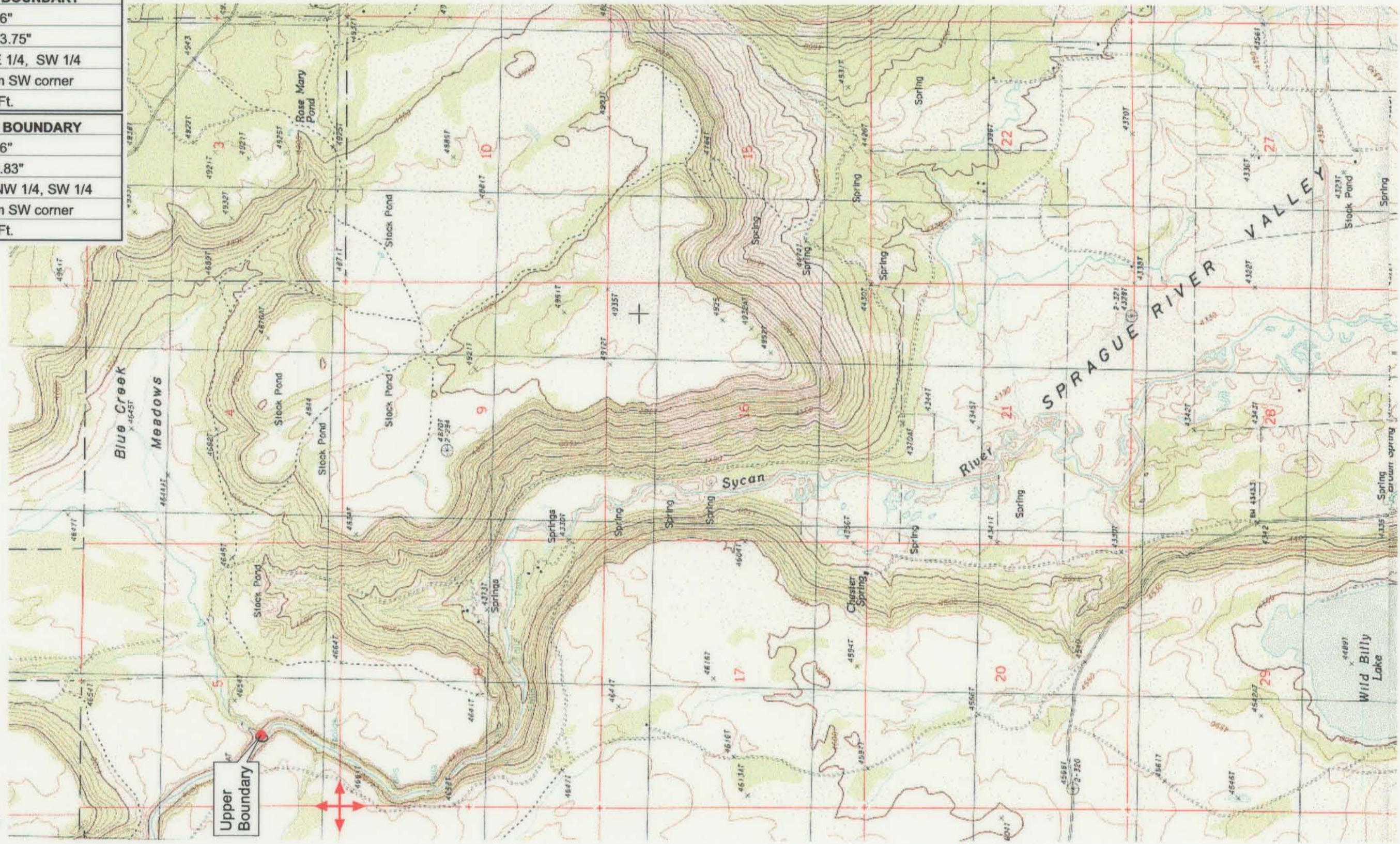


UPPER REACH BOUNDARY
Latitude: 42° 33' 44.96"
Longitude: 121° 19' 23.75"
T 35S, R 12E, S 5, NE 1/4, SW 1/4
Bearing/Distance: From SW corner N 42°9'43" E, 2,087.3 Ft.
LOWER REACH BOUNDARY
Latitude: 42° 27' 38.36"
Longitude: 121° 17' 9.83"
T 36S, R 12E, S 10, NW 1/4, SW 1/4
Bearing/Distance: From SW corner N 33°9'54" E, 1,777.7 Ft.



Source: USGS 7.5 Minute Quad: Spodue Mtn., Beatty.
Vertical Datum: National Geodetic Vertical Datum of 1929.
Horizontal Datum: 1927 North American Datum.

KLAMATH ADJUDICATION
CLAIM # **658** PAGE # **017**

Reach boundaries: Blue Creek to Sprague River.
Plate 1 of 2.

RECEIVED

OCT 01 1999

WATER RESOURCES DEPT.
SALEM, OREGON

Klamath Basin Water Rights Claim #658	
Department of the Interior Bureau of Indian Affairs	
Reach Name: Sycan River #1 (SY 1)	
Scale: 1:24,000	(Amended)

\\Lafayette\Graphics\Projects\GIS\BIA\60177.26\Topo\1117gis2.fh8