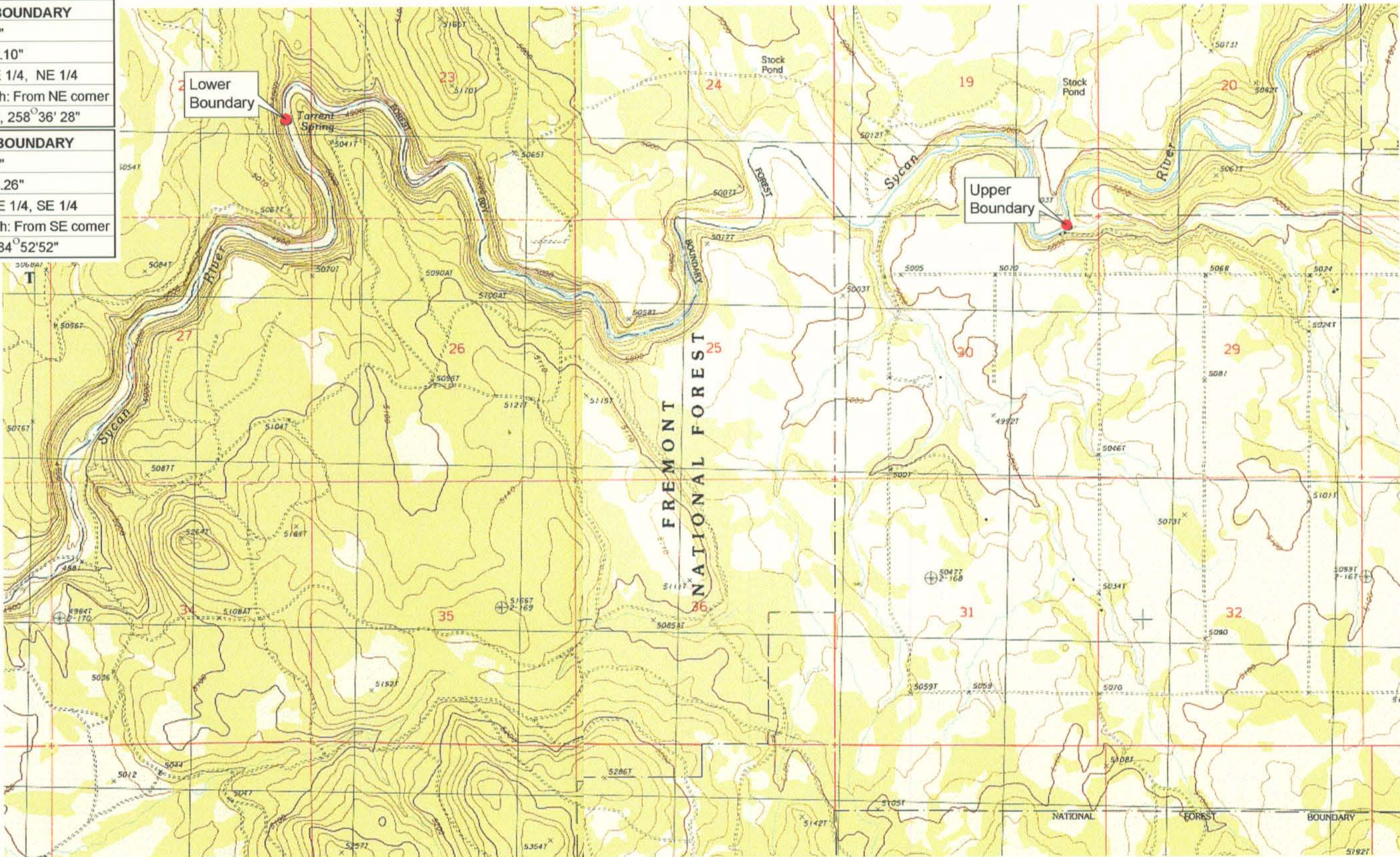


**UPPER REACH BOUNDARY**  
 Latitude: 42° 41' 17.52"  
 Longitude: 121° 12' 50.10"  
 T 33S, R 13E, S 30, NE 1/4, NE 1/4  
 Distance/Bearing/Azimuth: From NE corner  
 S 78° 36' 28" W, 243.6m, 258° 36' 28"

**LOWER REACH BOUNDARY**  
 Latitude: 42° 41' 39.03"  
 Longitude: 121° 16' 20.26"  
 T 33S, R 12E, S 22, NE 1/4, SE 1/4  
 Distance/Bearing/Azimuth: From SE corner  
 N 75° 7' 8" W, 641.2m, 284° 52' 52"



**RECEIVED**  
 MAR 01 1999  
 WATER RESOURCES DEPT  
 SALEM, OREGON



Source: USGS 7.5 Minute  
 Quad: Riverbed Butte, Silver  
 Dollar Flat.  
 Vertical Datum: National  
 Geodetic Vertical Datum of  
 1929.  
 Horizontal Datum: 1927 North  
 American Datum.

**KLAMATH ADJUDICATION**  
**CLAIM #661 PAGE # 04**

Reach boundaries: Merrit Creek to Torrent Spring.  
 Plate 1 of 1.

**Klamath Basin Water Rights Claim Map**  
 Department of the Interior Bureau of Indian Affairs  
 Reach Name: **Sycan River #4**  
 Scale: 1:24,000