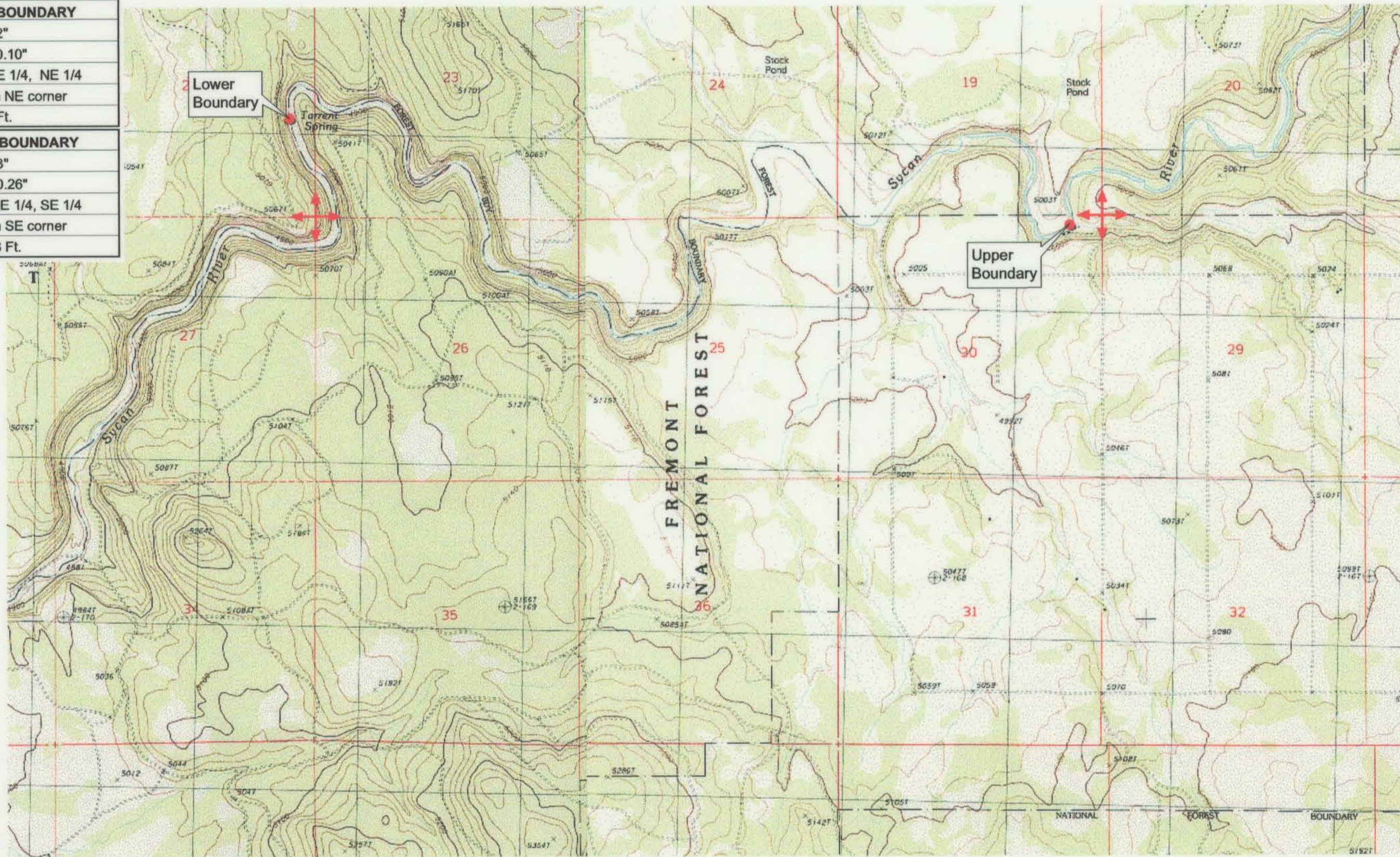


<b>UPPER REACH BOUNDARY</b>
Latitude: 42° 41' 17.52"
Longitude: 121° 12' 50.10"
T 33S, R 13E, S 30, NE 1/4, NE 1/4
Bearing/Distance: From NE corner S 78° 36' 28" W, 799.2 Ft.
<b>LOWER REACH BOUNDARY</b>
Latitude: 42° 41' 39.03"
Longitude: 121° 16' 20.26"
T 33S, R 12E, S 22, NE 1/4, SE 1/4
Bearing/Distance: From SE corner N 14° 52' 52" W, 2,103.8 Ft.



Source: USGS 7.5 Minute  
Quad: Riverbed Butte, Silver  
Dollar Flat.

Vertical Datum: National  
Geodetic Vertical Datum of  
1929.  
Horizontal Datum: 1927 North  
American Datum.

**KLAMATH ADJUDICATION**  
CLAIM # **661** PAGE # **014**

Reach boundaries: Merrit Creek to Torrent Spring.  
Plate 1 of 1.

**RECEIVED**

OCT 01 1999

WATER RESOURCES DEPT.  
SALEM, OREGON

**Klamath Basin Water Rights Claim #661**  
Department of the Interior Bureau of Indian Affairs  
Reach Name: **Sycan River #4 (SY 4)**  
Scale: 1:24,000 (Amended)

\\Lafayette\Graphics\Projects\GIS\BIA\60177.26\Topo\1117gis2.th8