

**UPPER REACH BOUNDARY**

Latitude: 42° 45' 20.40"  
Longitude: 121° 00' 1.26"  
T 32S, R 14E, S 36, SE 1/4, NE 1/4  
Distance/Bearing/Azimuth: From NE corner  
S 51° 1' 54" W, 470.8m, 231° 1' 54"

**LOWER REACH BOUNDARY**

Latitude: 42° 43' 16.75"  
Longitude: 121° 09' 52.77"  
T 33S, R 13E, S 10, NE 1/4, SW 1/4  
Distance/Bearing/Azimuth: From SW corner  
N 52° 59' 31" E, 733.7m, 52° 59' 31"

RECEIVED

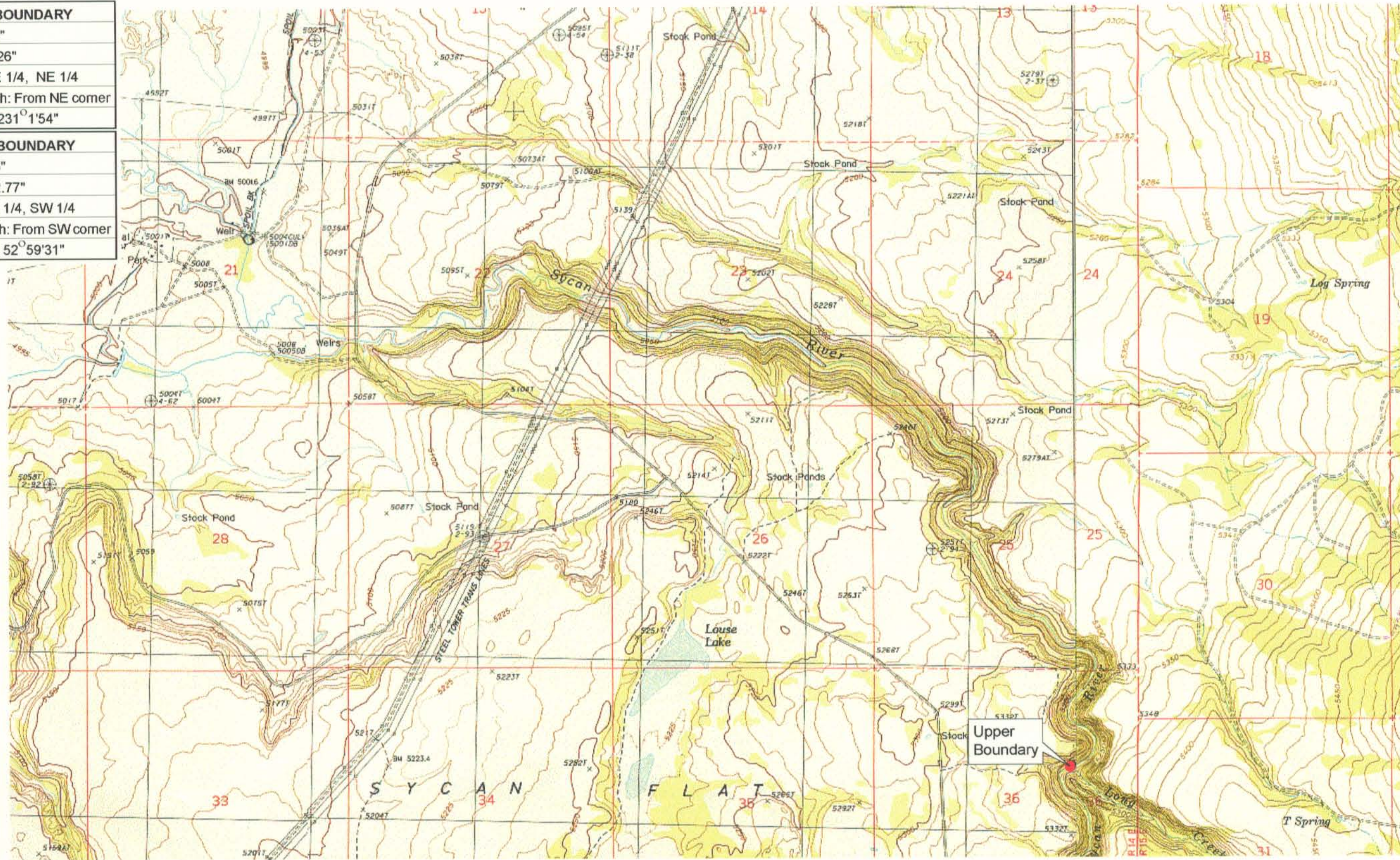
MAR 01 1999

WATER RESOURCES DEPT  
SALEM, OREGON



Source: USGS 7.5 Minute  
Quad: Sycan Marsh East,  
Sycan Marsh West, Riverbed  
Butte Spr., Pole Butte.

Vertical Datum: National  
Geodetic Vertical Datum of  
1929.  
Horizontal Datum: 1927 North  
American Datum.



**KLAMATH ADJUDICATION**

**CLAIM 663 PAGE # 06**

Reach boundaries: Long Creek to Guard Station.  
Plate 1 of 3.

**Klamath Basin Water Rights Claim Map**

Department of the Interior Bureau of Indian Affairs

Reach Name: **Sycan River #6**

Scale: 1:24,000