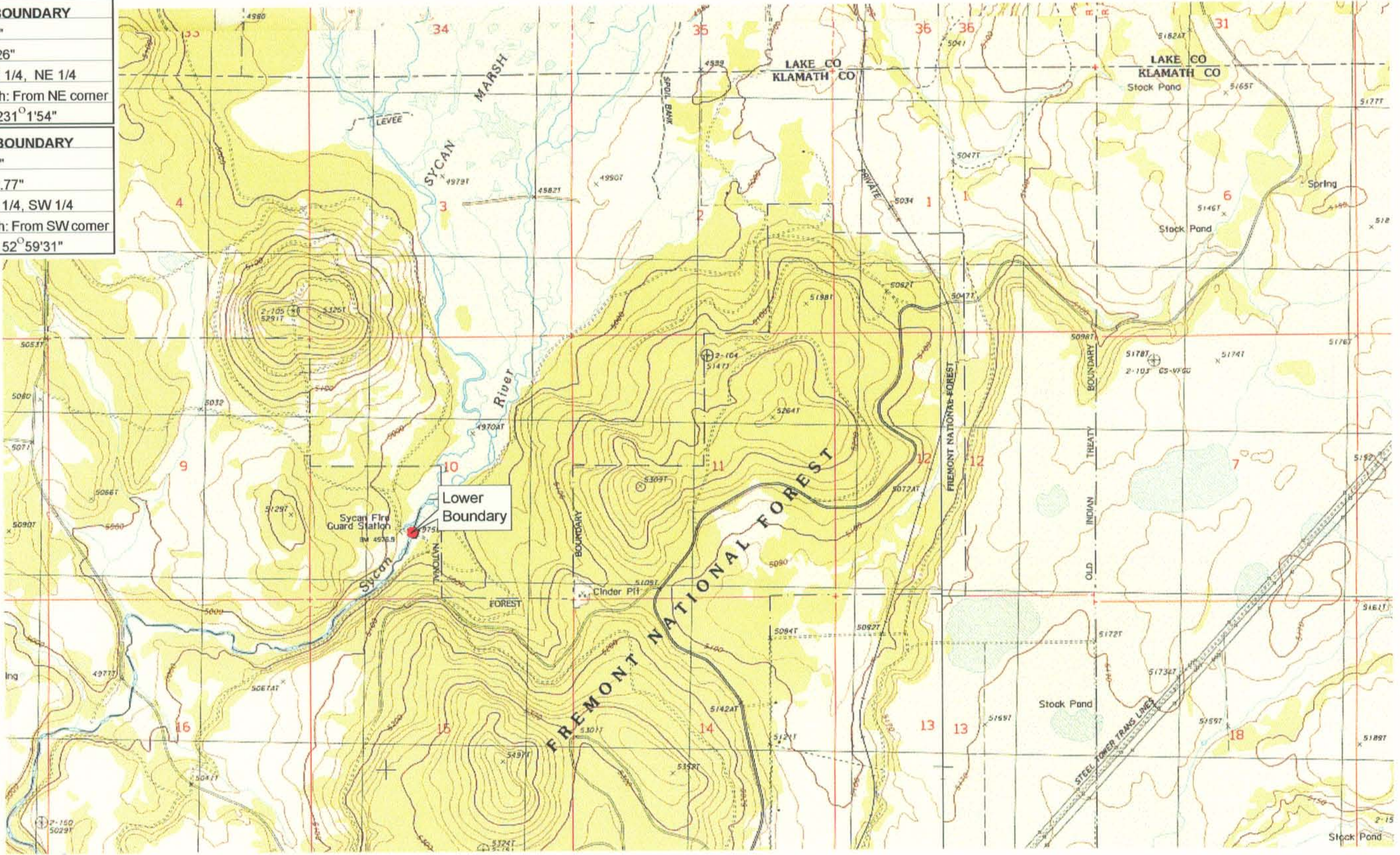


UPPER REACH BOUNDARY
Latitude: 42° 45' 20.40"
Longitude: 121° 00' 1.26"
T 32S, R 14E, S 36, SE 1/4, NE 1/4
Distance/Bearing/Azimuth: From NE corner S 51° 1' 54" W, 470.8m, 231° 1' 54"
LOWER REACH BOUNDARY
Latitude: 42° 43' 16.75"
Longitude: 121° 09' 52.77"
T 33S, R 13E, S 10, NE 1/4, SW 1/4
Distance/Bearing/Azimuth: From SW corner N 52° 59' 31" E, 733.7m, 52° 59' 31"



RECEIVED
MAR 01 1999
 WATER RESOURCES DEPT
 SALEM, OREGON



Source: USGS 7.5 Minute
 Quad: Sycan Marsh East,
 Sycan Marsh West, Riverbed
 Butte Spr., Pole Butte.
 Vertical Datum: National
 Geodetic Vertical Datum of
 1929.
 Horizontal Datum: 1927 North
 American Datum.

KLAMATH ADJUDICATION
CLAIM 663 PAGE # 08

Reach boundaries: Long Creek to Guard Station.
 Plate 3 of 3.

Klamath Basin Water Rights Claim Map
 Department of the Interior Bureau of Indian Affairs
 Reach Name: **Sycan River #6**
 Scale: 1:24,000