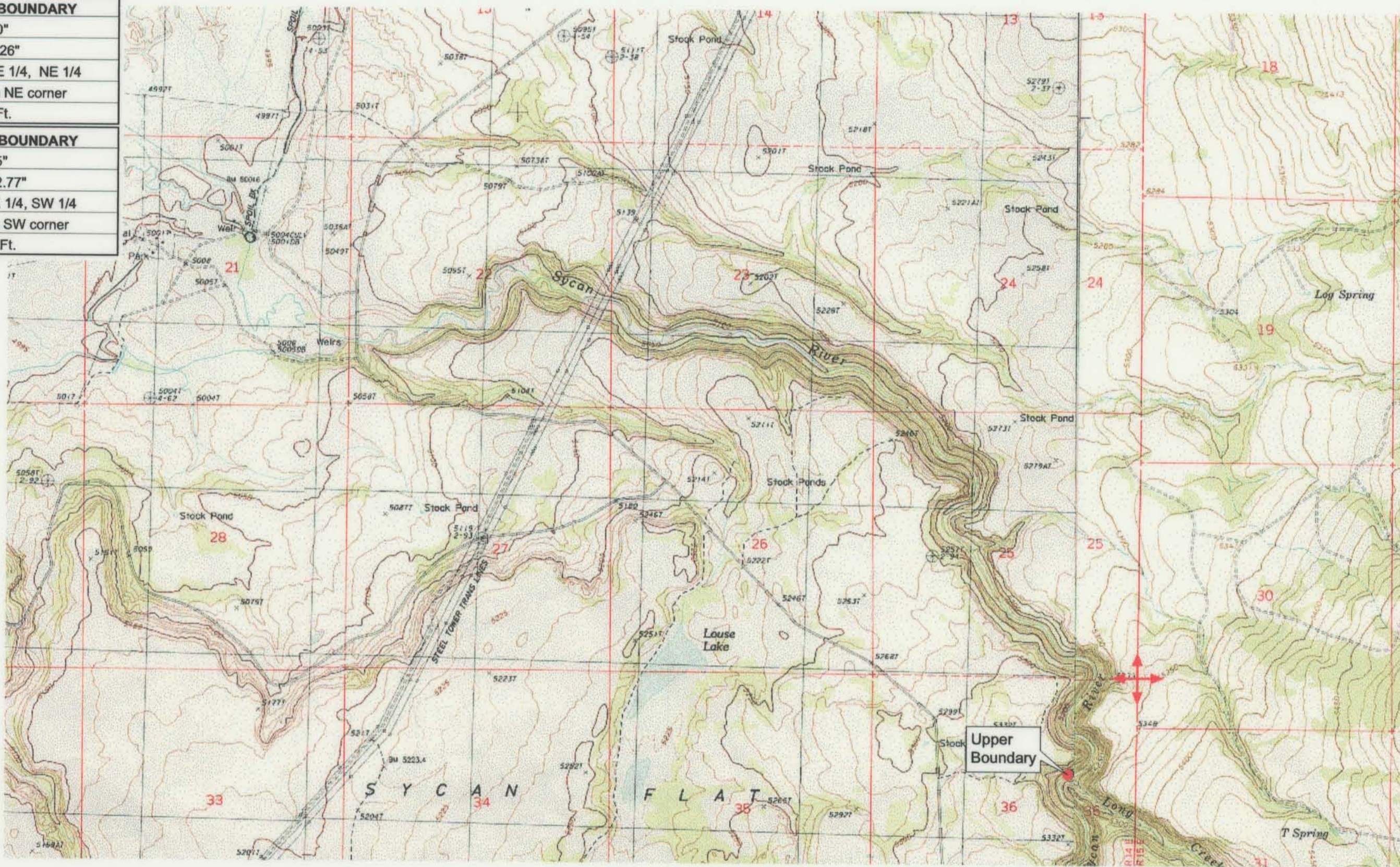


|  |
|--|
| <b>UPPER REACH BOUNDARY</b>                                      |
| Latitude: 42° 45' 20.40"   |
| Longitude: 121° 00' 1.26"  |
| T 32S, R 14E, S 36, SE 1/4, NE 1/4                               |
| Bearing/Distance: From NE corner<br>S 51° 1' 54" W, 1,544.7 Ft.  |
| <b>LOWER REACH BOUNDARY</b>                                      |
| Latitude: 42° 43' 16.75"   |
| Longitude: 121° 09' 52.77"                                       |
| T 33S, R 13E, S 10, NE 1/4, SW 1/4                               |
| Bearing/Distance: From SW corner<br>N 52° 59' 31" E, 2,407.3 Ft. |



Source: USGS 7.5 Minute  
 Quad: Sycan Marsh East,  
 Sycan Marsh West, Riverbed  
 Butte Spr., Pole Butte.

Vertical Datum: National  
 Geodetic Vertical Datum of  
 1929.  
 Horizontal Datum: 1927 North  
 American Datum.

**KLAMATH ADJUDICATION**  
**CLAIM # 663 PAGE # 18**

Reach boundaries: Long Creek to Guard Station.  
 Plate 1 of 3.

**RECEIVED**

OCT 01 1999

WATER RESOURCES DEPT.  
 SALEM, OREGON

Klamath Basin Water Rights Claim #663

Department of the Interior Bureau of Indian Affairs

Reach Name: Sycan River #6 (SY 6)

Scale: 1:24,000

(Amended)

\\Lafayette\Graphics\Projects\GIS\BIA\60177.26\Topo\1117gis2.fhb