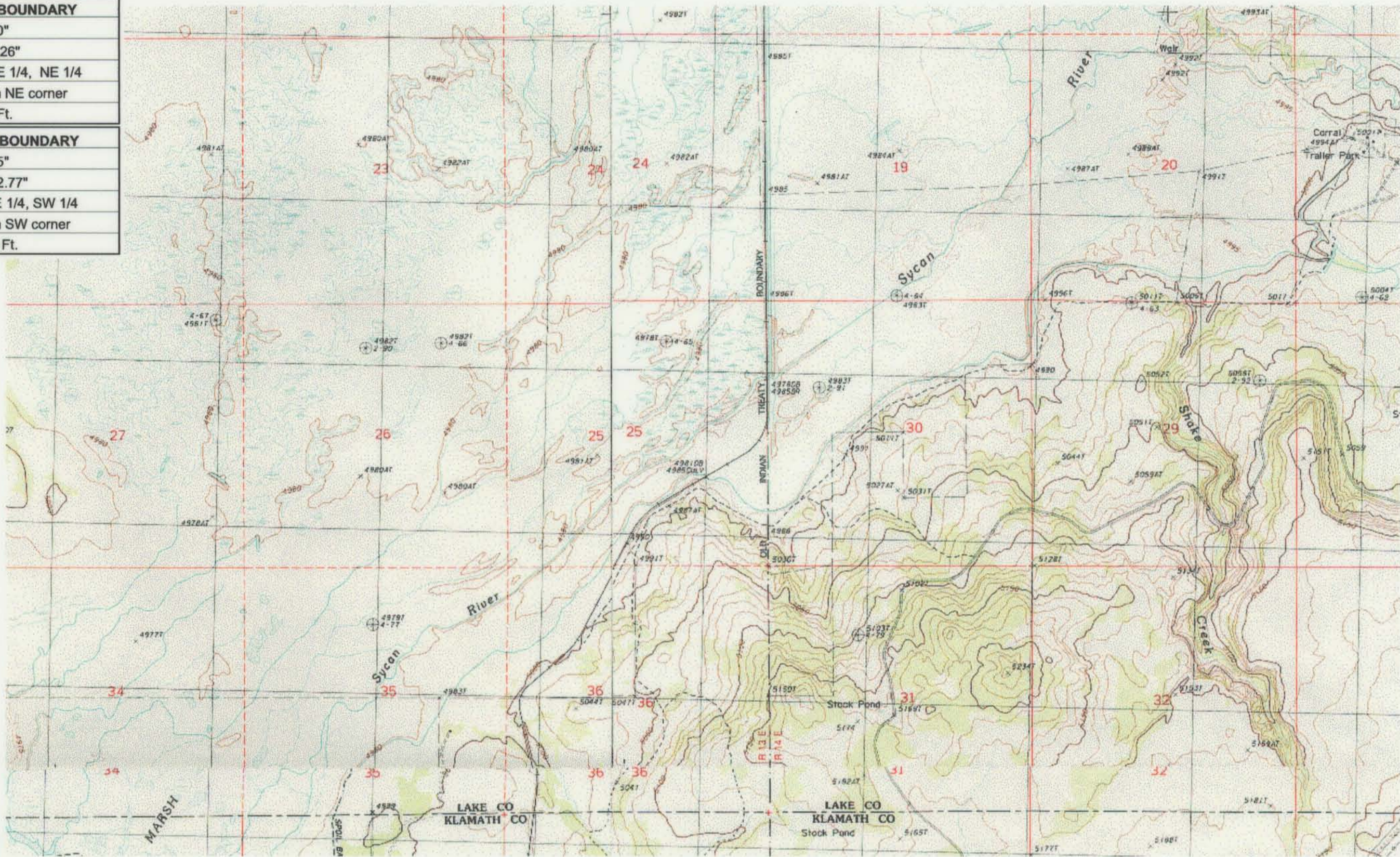


UPPER REACH BOUNDARY
Latitude: 42° 45' 20.40"
Longitude: 121° 00' 1.26"
T 32S, R 14E, S 36, SE 1/4, NE 1/4
Bearing/Distance: From NE corner S 51° 1' 54" W, 1,544.7 Ft.
LOWER REACH BOUNDARY
Latitude: 42° 43' 16.75"
Longitude: 121° 09' 52.77"
T 33S, R 13E, S 10, NE 1/4, SW 1/4
Bearing/Distance: From SW corner N 52° 59' 31" E, 2,407.3 Ft.



Source: USGS 7.5 Minute
 Quad: Sycan Marsh East,
 Sycan Marsh West, Riverbed
 Butte Spr., Pole Butte.

Vertical Datum: National
 Geodetic Vertical Datum of
 1929.

Horizontal Datum: 1927 North
 American Datum.

KLAMATH ADJUDICATION
 CLAIM # **6631** PAGE # **019**

Reach boundaries: Long Creek to Guard Station.
 Plate 2 of 3.

RECEIVED

OCT 01 1999
 WATER RESOURCES DEPT.
 SALEM, OREGON

Klamath Basin Water Rights Claim #663
 Department of the Interior Bureau of Indian Affairs
 Reach Name: **Sycan River #6 (SY 6)**
 Scale: 1:24,000 (Amended)

\\Lafayette\Graphics\Projects\GIS\BIA\60177.26\Topo\1117gis2.frb