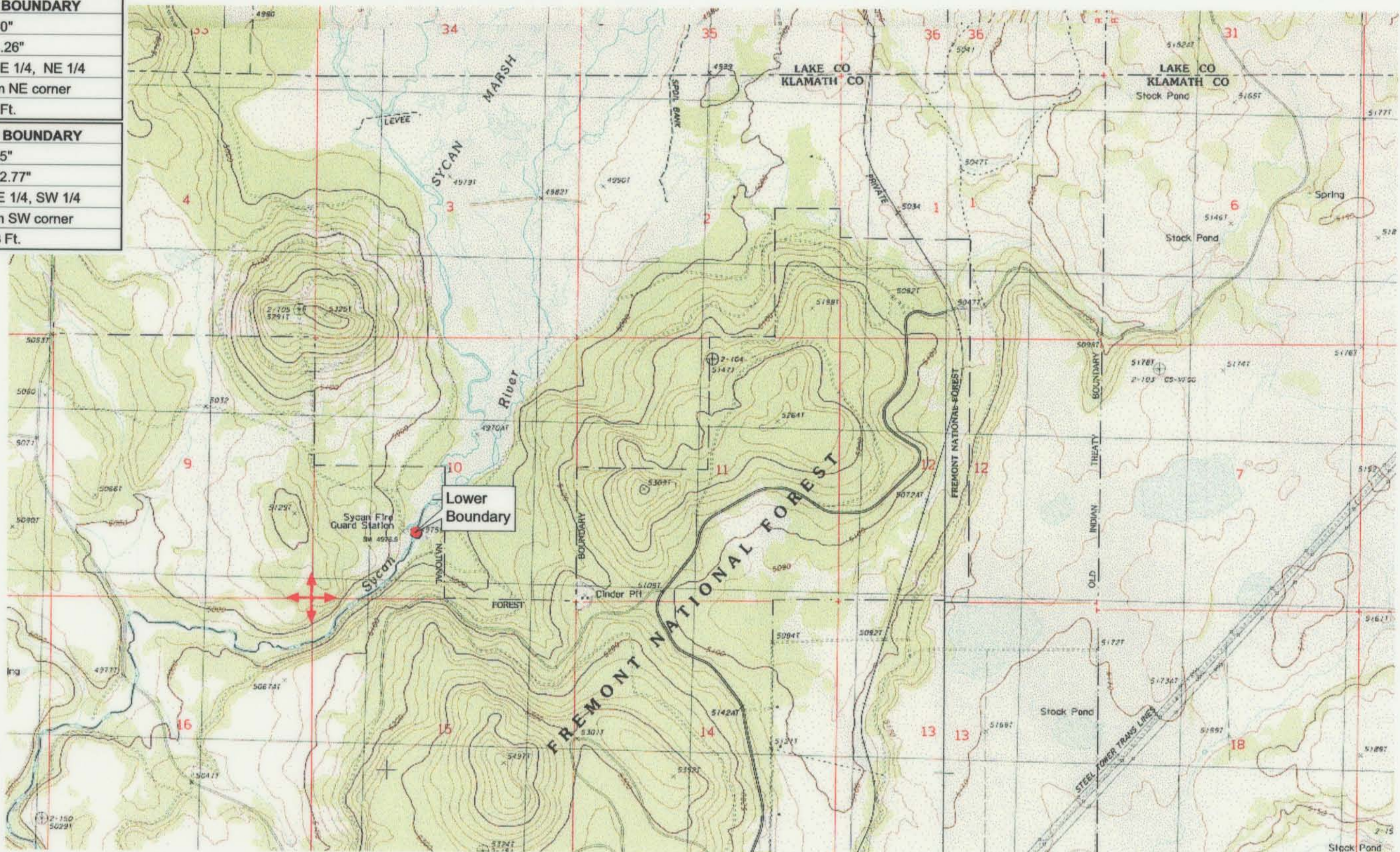


UPPER REACH BOUNDARY	
Latitude:	42° 45' 20.40"
Longitude:	121° 00' 1.26"
T 32S, R 14E, S 36, SE 1/4, NE 1/4	
Bearing/Distance: From NE corner	
S 51° 1' 54" W, 1,544.7 Ft.	
LOWER REACH BOUNDARY	
Latitude:	42° 43' 16.75"
Longitude:	121° 09' 52.77"
T 33S, R 13E, S 10, NE 1/4, SW 1/4	
Bearing/Distance: From SW corner	
N 52° 59' 31" E, 2,407.3 Ft.	



Source: USGS 7.5 Minute Quad: Sycan Marsh East, Sycan Marsh West, Riverbed Butte Spr., Pole Butte.

Vertical Datum: National Geodetic Vertical Datum of 1929.

Horizontal Datum: 1927 North American Datum.

KLAMATH ADJUDICATION
L. 663
CLAIM # PAGE # 020

Reach boundaries: Long Creek to Guard Station.
 Plate 3 of 3.

RECEIVED
OCT 01 1999
 WATER RESOURCES DEPT.
 SALEM, OREGON

Klamath Basin Water Rights Claim #663
 Department of the Interior Bureau of Indian Affairs
 Reach Name: **Sycan River #6 (SY 6)**
 Scale: 1:24,000 (Amended)

\\Lafayette\Graphics\Projects\GIS\BIA\60177.26\Topo\1117gis2.fh8