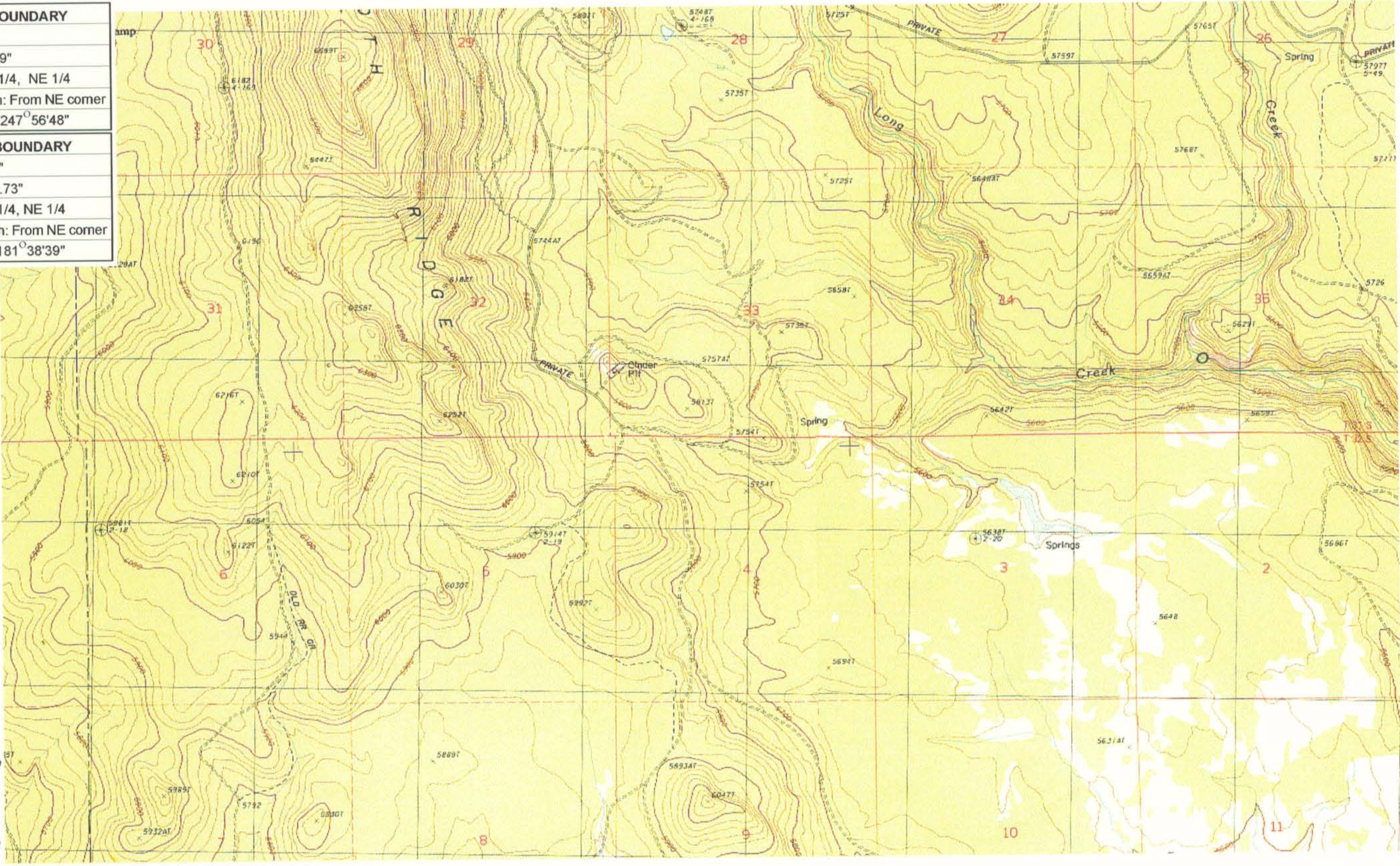


UPPER REACH BOUNDARY
Latitude: 42° 55' 6.40"
Longitude: 121° 19' 4.19"
T 31S, R 12E, S 5, NW 1/4, NE 1/4
Bearing/Distance/Azimuth: From NE corner S 67°56'48" W, 661.8m, 247°56'48"
LOWER REACH BOUNDARY
Latitude: 42° 49' 45.92"
Longitude: 121° 10' 22.73"
T 32S, R 13E, S 4, SE 1/4, NE 1/4
Bearing/Distance/Azimuth: From NE corner S 1°38'39" W, 501.9m, 181°38'39"



RECEIVED
 MAR 0 1 1999
 WATER RESOURCES DEPT.
 SALEM, OREGON



Source: USGS 7.5 Minute
 Quad: Yamsay Mtn., Hamelton
 Butte, Sycan Marsh West.
 Vertical Datum: National
 Geodetic Vertical Datum of
 1929.
 Horizontal Datum: 1927 North
 American Datum.

KLAMATH ADJUDICATION
CLAIM # 665 PAGE # 09

Reach: Long Creek.
 Plate 3 of 4.

Klamath Basin Water Rights Claim Map
 Department of the Interior Bureau of Indian Affairs
 Reach Name: **Sycan River #8**
 Scale: 1:24,000