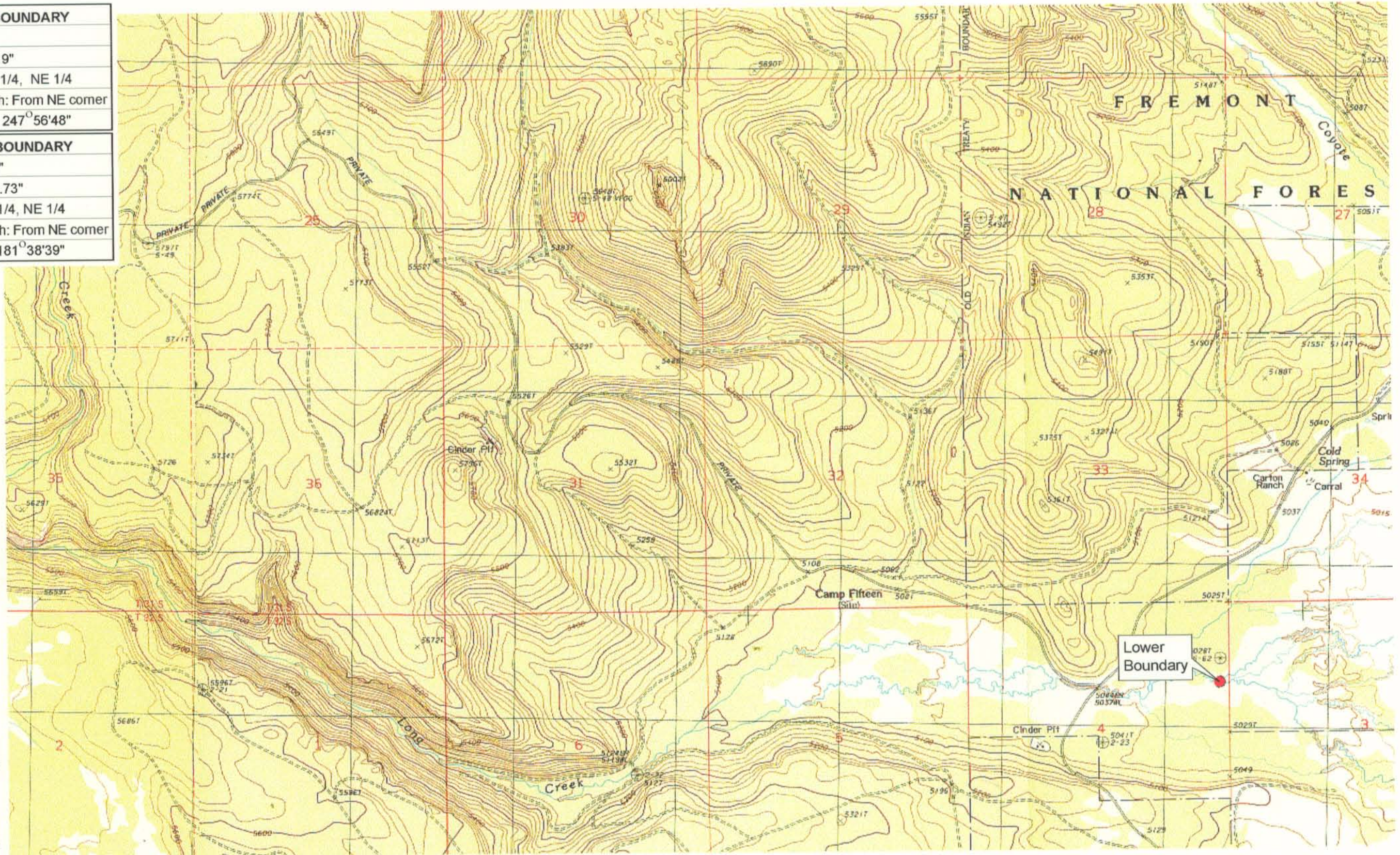


UPPER REACH BOUNDARY
Latitude: 42° 55' 6.40"
Longitude: 121° 19' 4.19"
T 31S, R 12E, S 5, NW 1/4, NE 1/4
Bearing/Distance/Azimuth: From NE corner S 67° 56' 48" W, 661.8m, 247° 56' 48"
LOWER REACH BOUNDARY
Latitude: 42° 49' 45.92"
Longitude: 121° 10' 22.73"
T 32S, R 13E, S 4, SE 1/4, NE 1/4
Bearing/Distance/Azimuth: From NE corner S 1° 38' 39" W, 501.9m, 181° 38' 39"



RECEIVED

MAR 01 1999

WATER RESOURCES DEPT.
SALEM, OREGON



Source: USGS 7.5 Minute
Quad: Yamsay Mtn., Hamelton
Butte, Sycan Marsh West.

Vertical Datum: National
Geodetic Vertical Datum of
1929.
Horizontal Datum: 1927 North
American Datum.

KLAMATH ADJUDICATION

CLAIM # **665** PAGE # **10**

Reach: Long Creek.
Plate 4 of 4.

Klamath Basin Water Rights Claim Map

Department of the Interior Bureau of Indian Affairs

Reach Name: **Sycan River #8**

Scale: 1:24,000