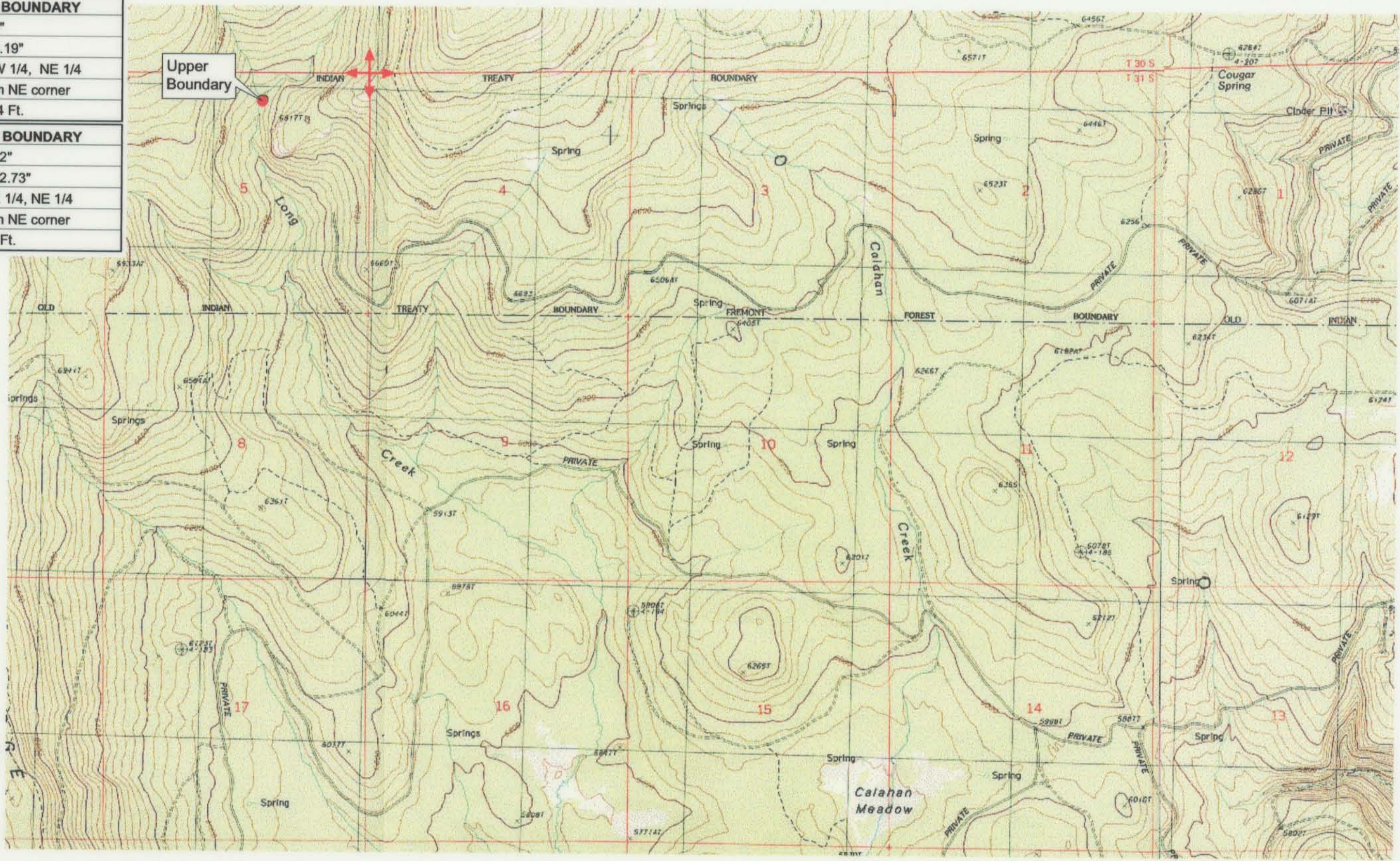


UPPER REACH BOUNDARY
Latitude: 42° 55' 6.40"
Longitude: 121° 19' 4.19"
T 31S, R 12E, S 5, NW 1/4, NE 1/4
Bearing/Distance: From NE corner S 67° 56' 48" W, 2,171.4 Ft.
LOWER REACH BOUNDARY
Latitude: 42° 49' 45.92"
Longitude: 121° 10' 22.73"
T 32S, R 13E, S 4, SE 1/4, NE 1/4
Bearing/Distance: From NE corner S 1° 38' 39" W, 1,646.9 Ft.



Source: USGS 7.5 Minute Quad: Yamsay Mtn., Hamelton Butte, Sycan Marsh West.

Vertical Datum: National Geodetic Vertical Datum of 1929.

Horizontal Datum: 1927 North American Datum.

KLAMATH ADJUDICATION
665
 CLAIM # **665** PAGE # **021**

Reach: Long Creek.
 Plate 1 of 4.

RECEIVED

OCT 01 1999

WATER RESOURCES DEPT.
 SALEM, OREGON

Klamath Basin Water Rights Claim #665
 Department of the Interior Bureau of Indian Affairs
 Reach Name: **Sycan River #8 (SY 8)**
 Scale: 1:24,000 (Amended)