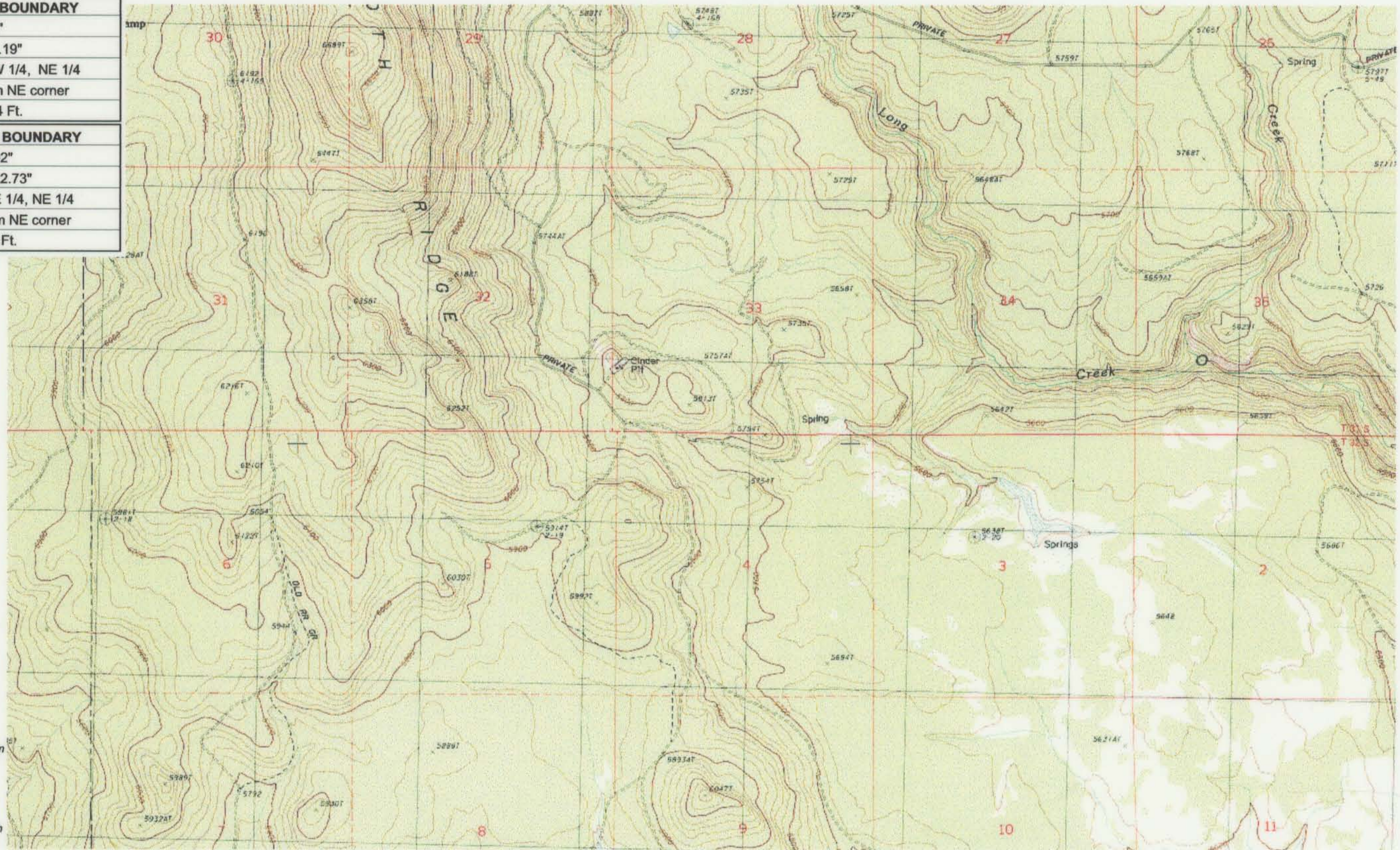


<b>UPPER REACH BOUNDARY</b>
Latitude: 42° 55' 6.40"
Longitude: 121° 19' 4.19"
T 31S, R 12E, S 5, NW 1/4, NE 1/4
Bearing/Distance: From NE corner S 67° 56' 48" W, 2,171.4 Ft.
<b>LOWER REACH BOUNDARY</b>
Latitude: 42° 49' 45.92"
Longitude: 121° 10' 22.73"
T 32S, R 13E, S 4, SE 1/4, NE 1/4
Bearing/Distance: From NE corner S 1° 38' 39" W, 1,646.9 Ft.



Source: USGS 7.5 Minute  
 Quad: Yamsay Mtn., Hamelton  
 Butte, Sycan Marsh West.

Vertical Datum: National  
 Geodetic Vertical Datum of  
 1929.

Horizontal Datum: 1927 North  
 American Datum.

**KLAMATH ADJUDICATION**  
**665**  
 CLAIM # PAGE # **023**

Reach: Long Creek.  
 Plate 3 of 4.

**RECEIVED**  
 OCT 01 1999

**Klamath Basin Water Rights Claim #665**  
 Department of the Interior Bureau of Indian Affairs  
 Reach Name: **Sycan River #8 (SY 8)**  
 Scale: 1:24,000 (Amended)

WATER RESOURCES DEPT.  
 SALEM, OREGON

\\Lafayette\Graphics\Projects\GIS\BIA\60177.26\Topo\1117gis2.fn8