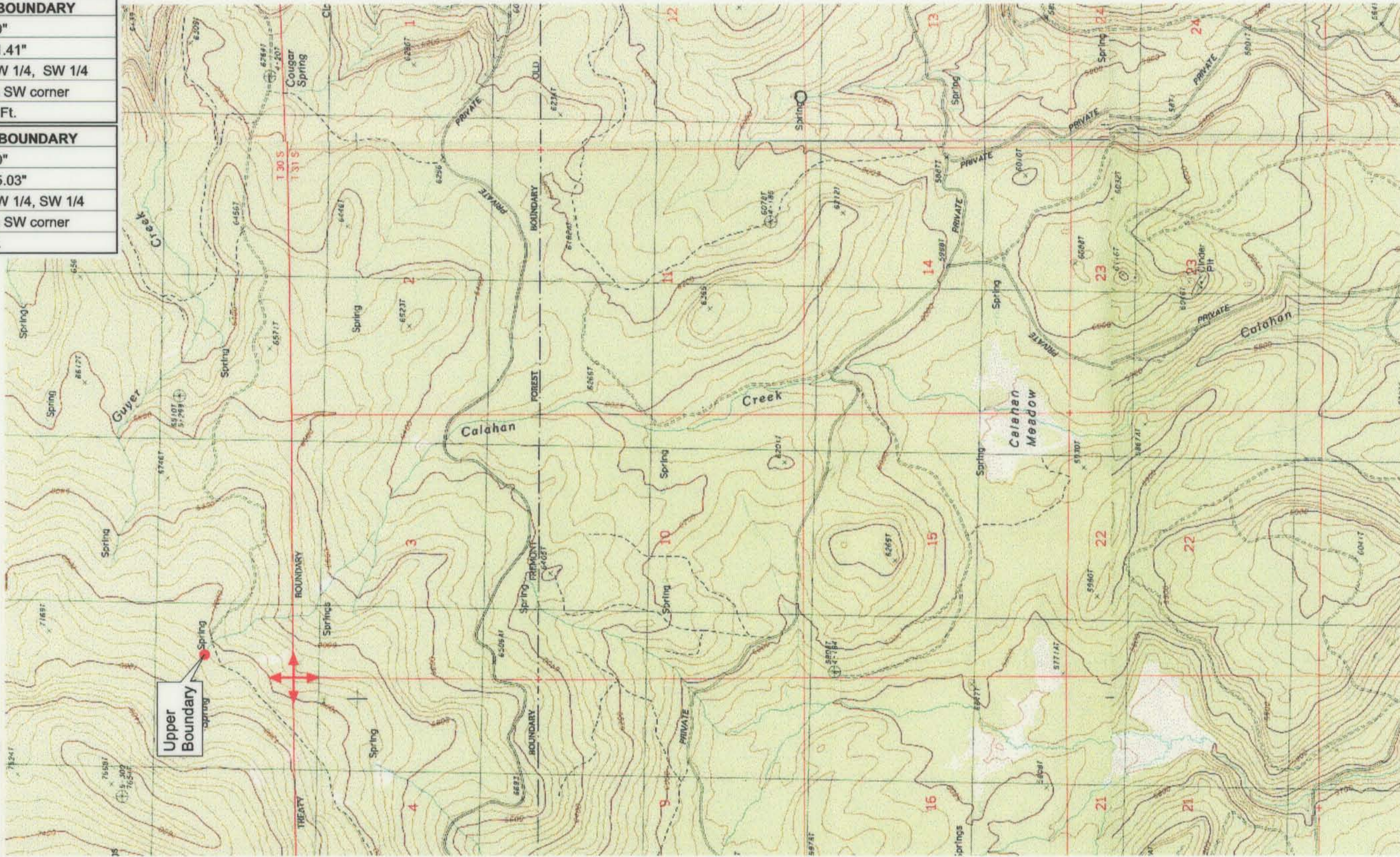


<b>UPPER REACH BOUNDARY</b>
Latitude: 42° 55' 23.49"
Longitude: 121° 17' 21.41"
T 30S, R 12E, S 34, NW 1/4, SW 1/4
Bearing/Distance: From SW corner N 19° 43' 30" E, 1,666.2 Ft.
<b>LOWER REACH BOUNDARY</b>
Latitude: 42° 50' 16.80"
Longitude: 121° 15' 55.03"
T 31S, R 12E, S 35, NW 1/4, SW 1/4
Bearing/Distance: From SW corner N 41° 9' 6" E, 1,997.4 Ft.



Source: USGS 7.5 Minute  
 Quad: Yamsay Mtn., Hamelton  
 Butte, Sycan Marsh West,  
 Partin Butte.

Vertical Datum: National  
 Geodetic Vertical Datum of  
 1929.  
 Horizontal Datum: 1927 North  
 American Datum.

**KLAMATH ADJUDICATION**  
 CLAIM # **666** PAGE # **017**

Reach: Calahan Creek.  
 Plate 1 of 2.

**RECEIVED**

OCT 01 1999

WATER RESOURCES DEPT.  
 SALEM, OREGON

**Klamath Basin Water Rights Claim #666**  
 Department of the Interior Bureau of Indian Affairs  
 Reach Name: **Sycan River #9 (SY 9)**  
 Scale: 1:24,000 (Amended)

\\Lafayette\Graphics\Projects\GIS\BIA\60177.26\Topo\1117gis2.fh8