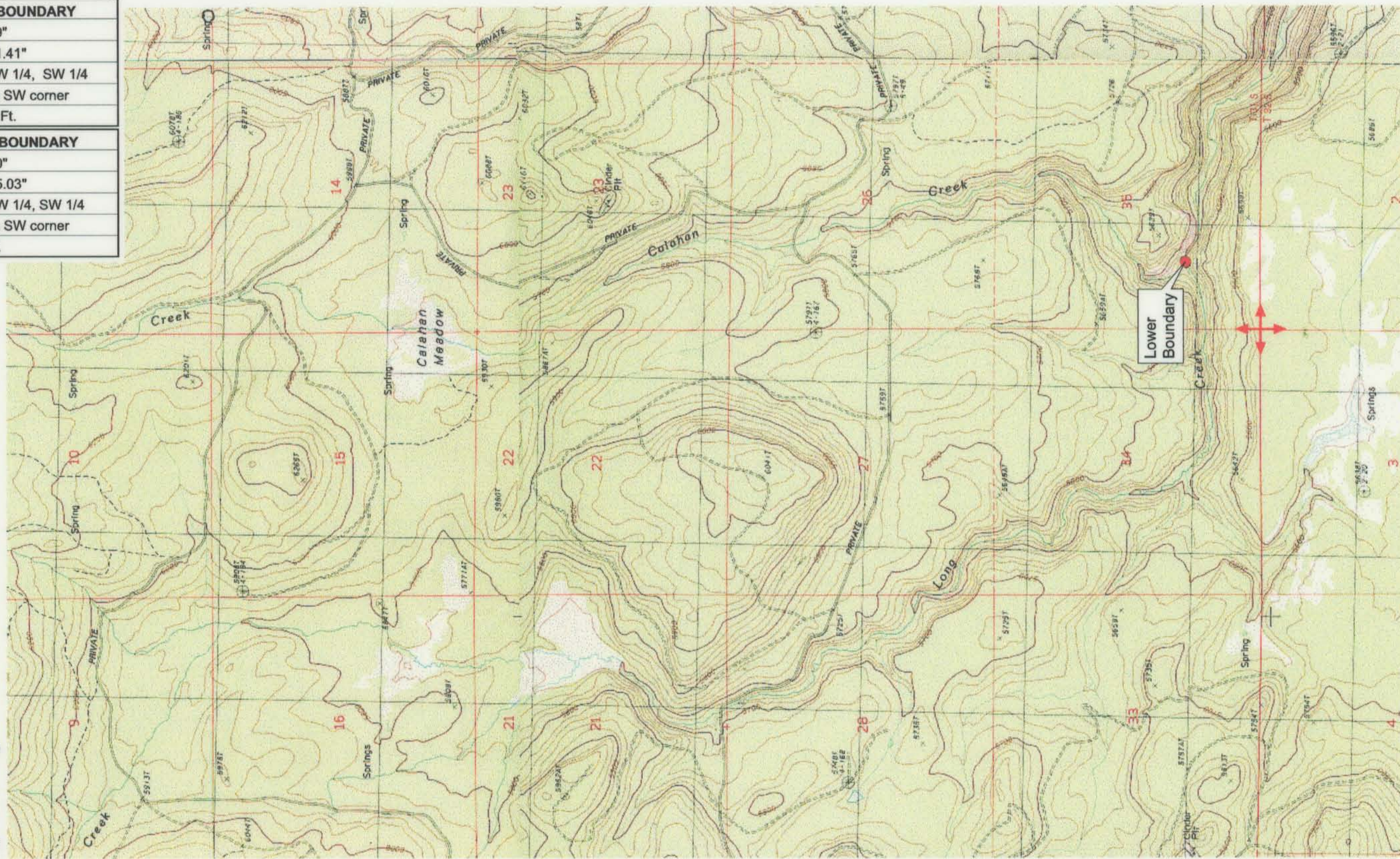


UPPER REACH BOUNDARY
Latitude: 42° 55' 23.49"
Longitude: 121° 17' 21.41"
T 30S, R 12E, S 34, NW 1/4, SW 1/4
Bearing/Distance: From SW corner N 19° 43' 30" E, 1,666.2 Ft.
LOWER REACH BOUNDARY
Latitude: 42° 50' 16.80"
Longitude: 121° 15' 55.03"
T 31S, R 12E, S 35, NW 1/4, SW 1/4
Bearing/Distance: From SW corner N 41° 9' 6" E, 1,997.4 Ft.



Source: USGS 7.5 Minute Quad: Yamsay Mtn., Hamelton Butte, Sycan Marsh West, Partin Butte.

Vertical Datum: National Geodetic Vertical Datum of 1929.
Horizontal Datum: 1927 North American Datum.

KLAMATH ADJUDICATION
CLAIM # 666 PAGE # 018

Reach: Calahan Creek.
Plate 2 of 2.

RECEIVED

OCT 01 1999

WATER RESOURCES DEPT.
SALEM, OREGON

Klamath Basin Water Rights Claim #666
 Department of the Interior Bureau of Indian Affairs
 Reach Name: **Sycan River #9 (SY 9)**
 Scale: 1:24,000 (Amended)

\\Lafayette\Graphics\Projects\GIS\BIA\60177.26\Topo\1117gis2.fhb