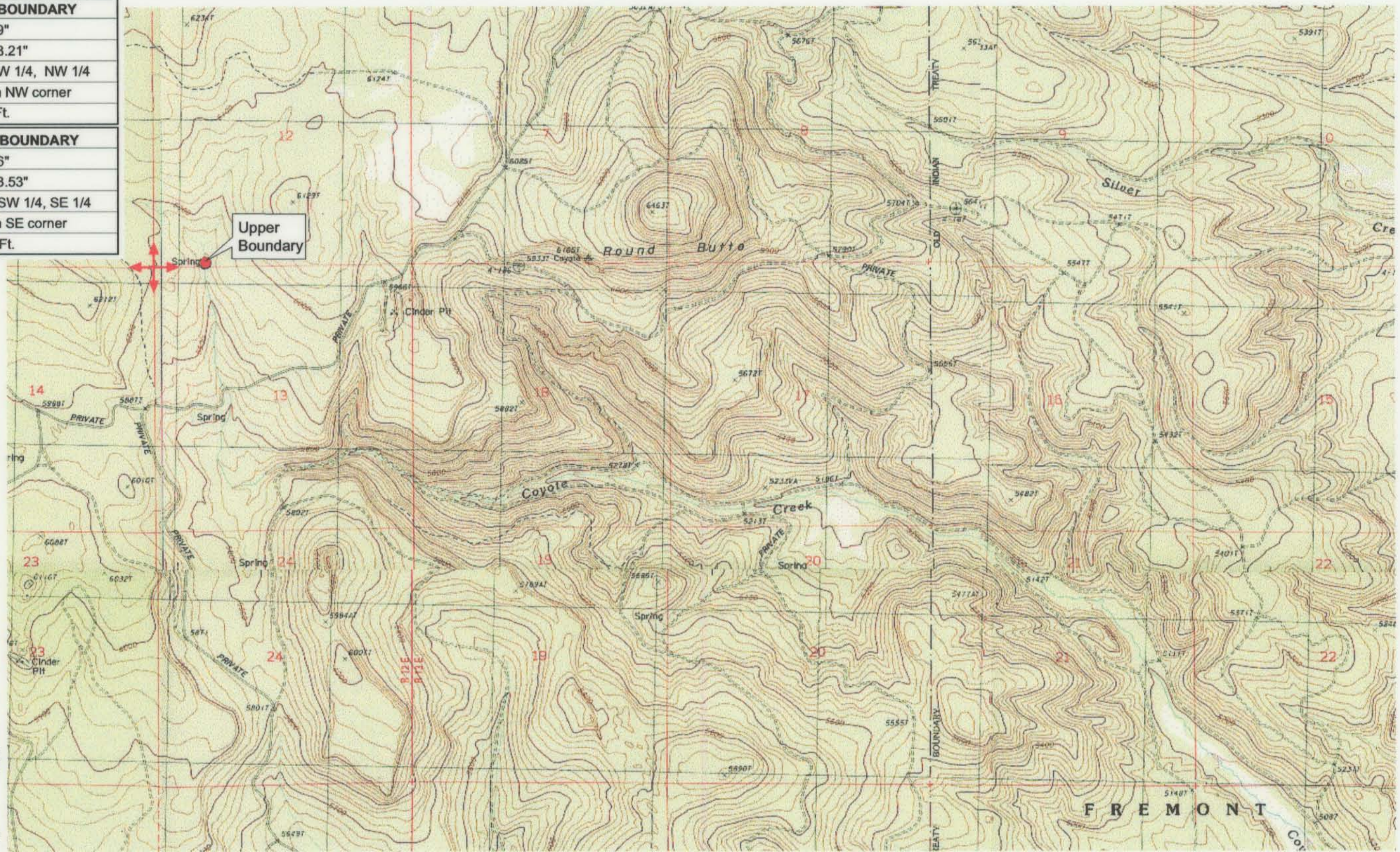


<b>UPPER REACH BOUNDARY</b>
Latitude: 42° 53' 31.59"
Longitude: 121° 14' 48.21"
T 31S, R 12E, S 13, NW 1/4, NW 1/4
Bearing/Distance: From NW corner S 87° 15' 6" E, 1,072.7 Ft.
<b>LOWER REACH BOUNDARY</b>
Latitude: 42° 50' 59.66"
Longitude: 121° 07' 13.53"
T 31S, R 13E, S 25, SW 1/4, SE 1/4
Bearing/Distance: From SE corner N 73° 9' 43" W, 2,271.0 Ft.



Source: USGS 7.5 Minute  
 Quad: Partin Butte, Sycan  
 Marsh West, Sycan Marsh East,  
 Yamsay Mtn. Hamelton Butte.

Vertical Datum: National  
 Geodetic Vertical Datum of  
 1929.  
 Horizontal Datum: 1927 North  
 American Datum.

**KLAMATH ADJUDICATION**  
**667** PAGE # **019**  
 CLAIM # PAGE #

Reach: Coyote Creek.  
 Plate 1 of 2.

**RECEIVED**

OCT 01 1999

WATER RESOURCES DEPT.  
 SALEM, OREGON

**Klamath Basin Water Rights Claim #667**  
 Department of the Interior Bureau of Indian Affairs  
 Reach Name: **Sycan River #10 (SY 10)**  
 Scale: 1:24,000 (Amended)

\\Lafayette\Graphics\Projects\GIS\BIA\60177.26\Topo\1117gis2.mxd