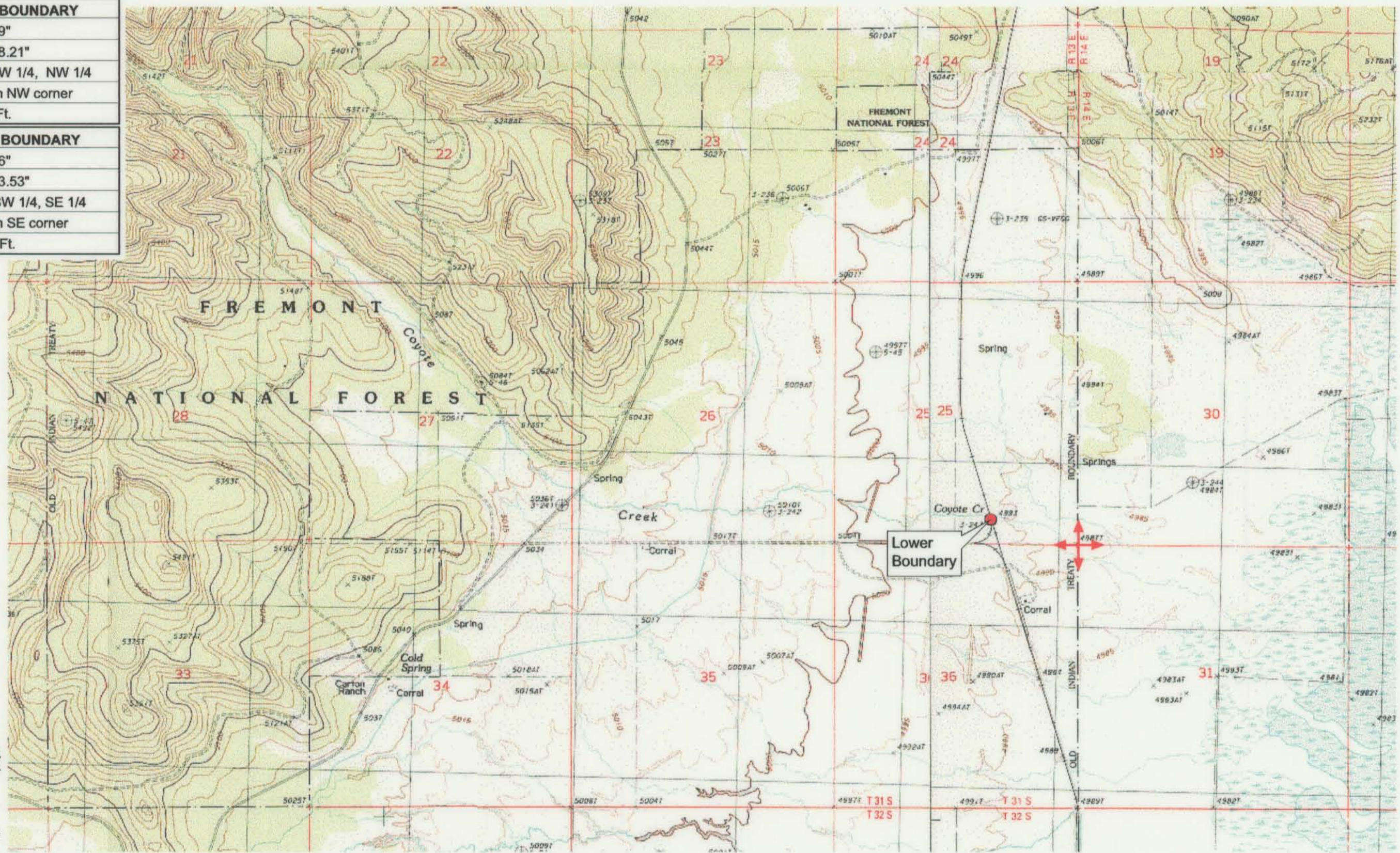


UPPER REACH BOUNDARY
Latitude: 42° 53' 31.59"
Longitude: 121° 14' 48.21"
T 31S, R 12E, S 13, NW 1/4, NW 1/4
Bearing/Distance: From NW corner S 87° 15' 6" E, 1,072.7 Ft.
LOWER REACH BOUNDARY
Latitude: 42° 50' 59.66"
Longitude: 121° 07' 13.53"
T 31S, R 13E, S 25, SW 1/4, SE 1/4
Bearing/Distance: From SE corner N 73° 9' 43" W, 2,271.0 Ft.



Source: USGS 7.5 Minute Quad: Partin Butte, Sycan Marsh West, Sycan Marsh East, Yamsay Mtn., Hamelton Butte.

Vertical Datum: National Geodetic Vertical Datum of 1929.
Horizontal Datum: 1927 North American Datum.

KLAMATH ADJUDICATION
 CLAIM # **667** PAGE # **020**

Reach: Coyote Creek.
Plate 2 of 2.

RECEIVED

OCT 01 1999

WATER RESOURCES DEPT.
SALEM, OREGON

Klamath Basin Water Rights Claim #667
 Department of the Interior Bureau of Indian Affairs
 Reach Name: **Sycan River #10 (SY 10)**
 Scale: 1:24,000 (Amended)

\\Lafayette\Graphics\Projects\GIS\BIA\60177.26\Topo\1117gis2.fh8