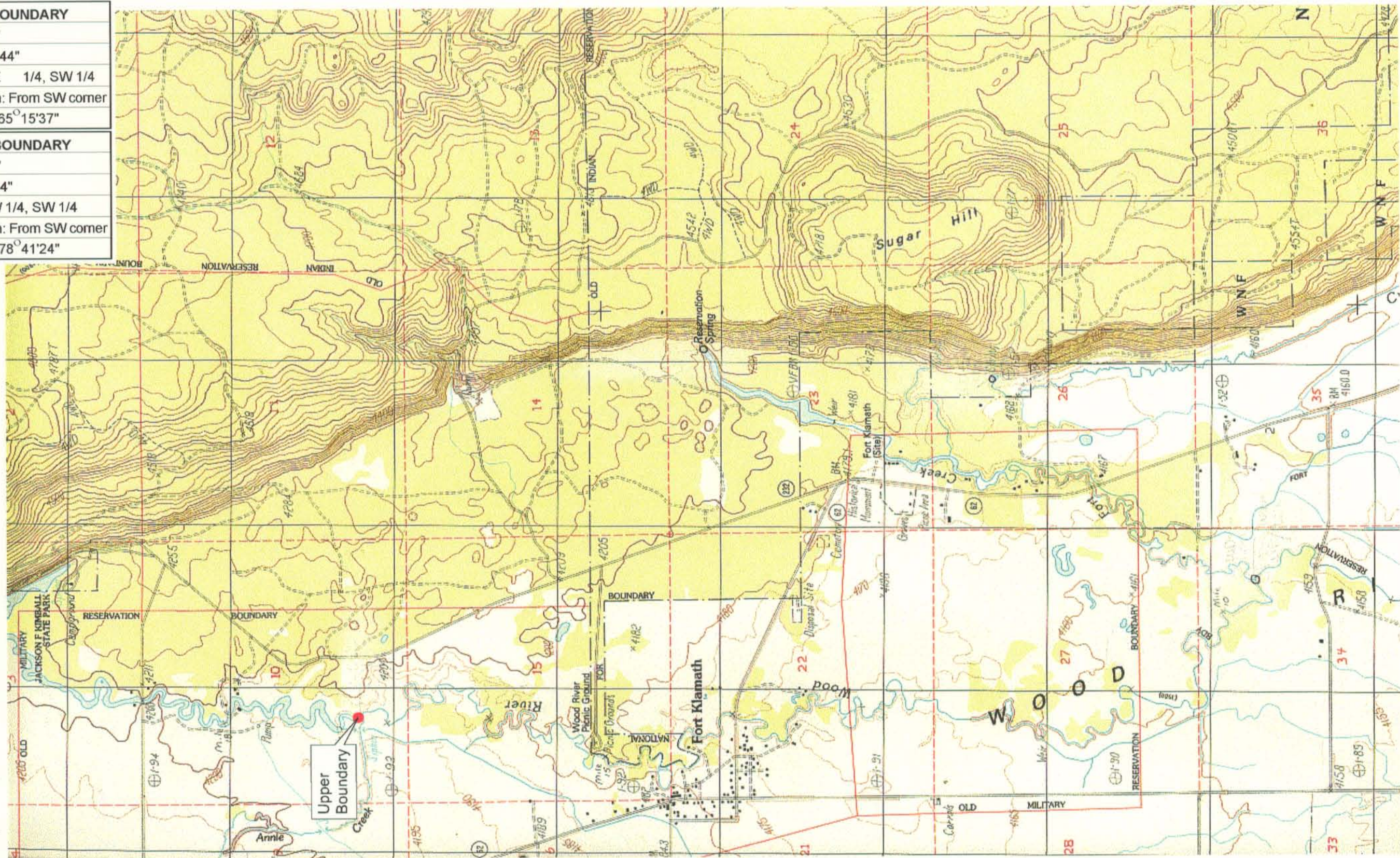
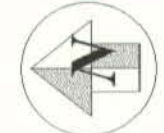


UPPER REACH BOUNDARY
Latitude: 42° 43' 18.57"
Longitude: 121° 59' 18.44"
T 33S, R 7.5E, S 10, SE 1/4, SW 1/4
Distance/Bearing/Azimuth: From SW corner N 65° 15'37" E, 591.9m, 65° 15'37"
LOWER REACH BOUNDARY
Latitude: 42° 36' 15.93"
Longitude: 121° 57' 0.34"
T 34S, R 7.5E, S 13, SW 1/4, SW 1/4
Distance/Bearing/Azimuth: From SW corner N 78° 41'24" E, 369.3m, 78° 41'24"



RECEIVED
 MAR 01 1999
 WATER RESOURCES DEPT
 SALEM, OREGON



Source: USGS 7.5 Minute
 Quad: Fort Klamath, Fort Creek,
 Agency Lake.
 Vertical Datum: National
 Geodetic Vertical Datum of 1929.
 Horizontal Datum: 1927 North
 American Datum.

Upper
 Boundary

KLAMATH ADJUDICATION
 CLAIM 668 PAGE # 05

Reach boundaries: Annie Creek to Agency Lake.
 Plate 1 of 2.

Klamath Basin Water Rights Claim Map
 Department of the Interior Bureau of Indian Affairs
 Reach Name: **Wood River #2**
 Scale: 1:24,000