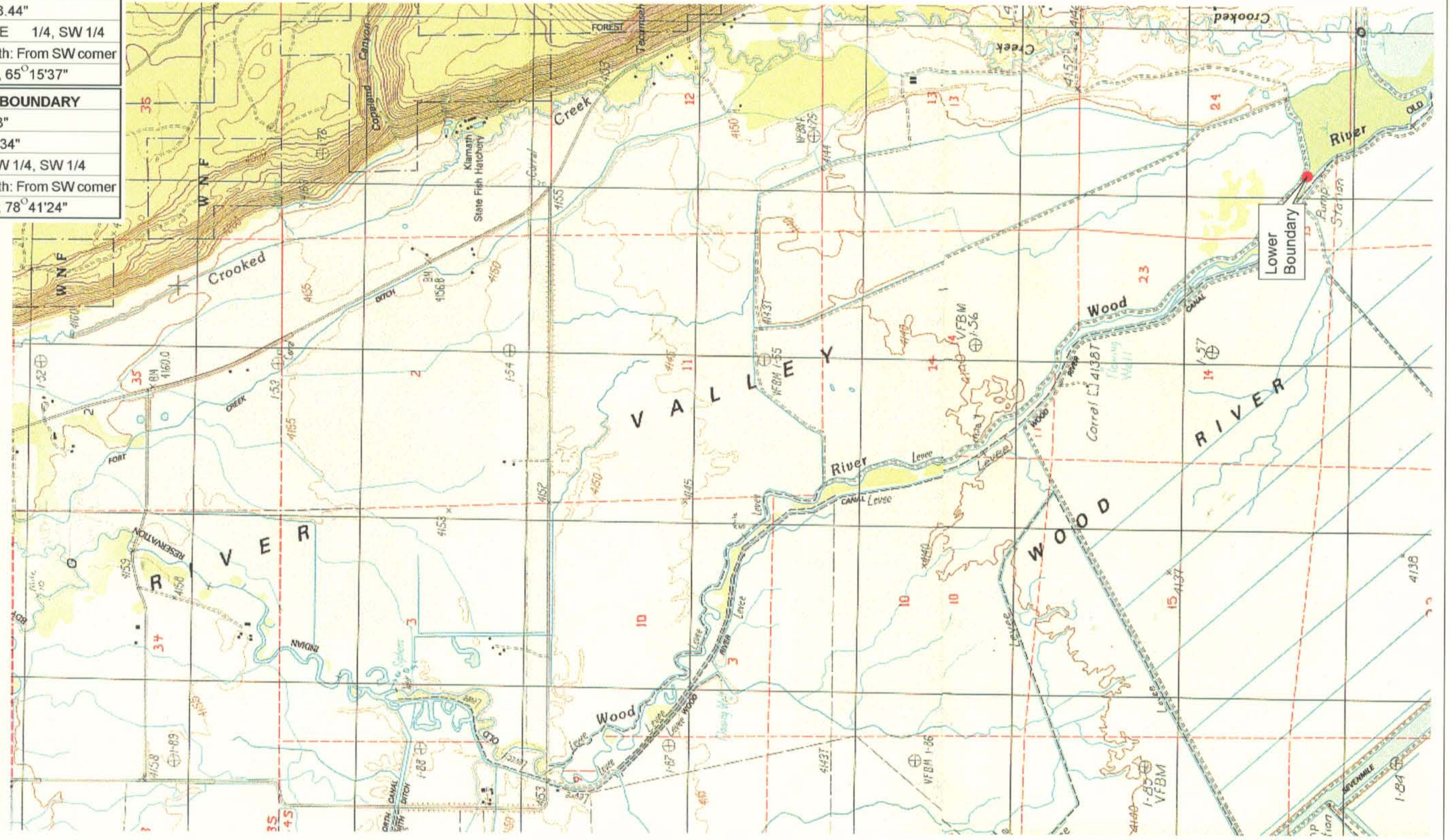


UPPER REACH BOUNDARY
Latitude: 42° 43' 18.57"
Longitude: 121° 59' 18.44"
T 33S, R 7.5E, S 10, SE 1/4, SW 1/4
Distance/Bearing/Azimuth: From SW corner N 65° 15' 37" E, 591.9m, 65° 15' 37"
LOWER REACH BOUNDARY
Latitude: 42° 36' 15.93"
Longitude: 121° 57' 0.34"
T 34S, R 7.5E, S 13, SW 1/4, SW 1/4
Distance/Bearing/Azimuth: From SW corner N 78° 41' 24" E, 369.3m, 78° 41' 24"



RECEIVED
MAR 01 1999
WATER RESOURCES DEPT.
SALEM OREGON



Source: USGS 7.5 Minute
Quad: Fort Klamath, Fort Creek,
Agency Lake.

Vertical Datum: National
Geodetic Vertical Datum of 1929.
Horizontal Datum: 1927 North
American Datum.

KLAMATH ADJUDICATION
CLAIM 668 PAGE # 06

Reach boundaries: Annie Creek to Agency Lake.
Plate 2 of 2.

Klamath Basin Water Rights Claim Map
Department of the Interior Bureau of Indian Affairs
Reach Name: Wood River #2
Scale: 1:24,000