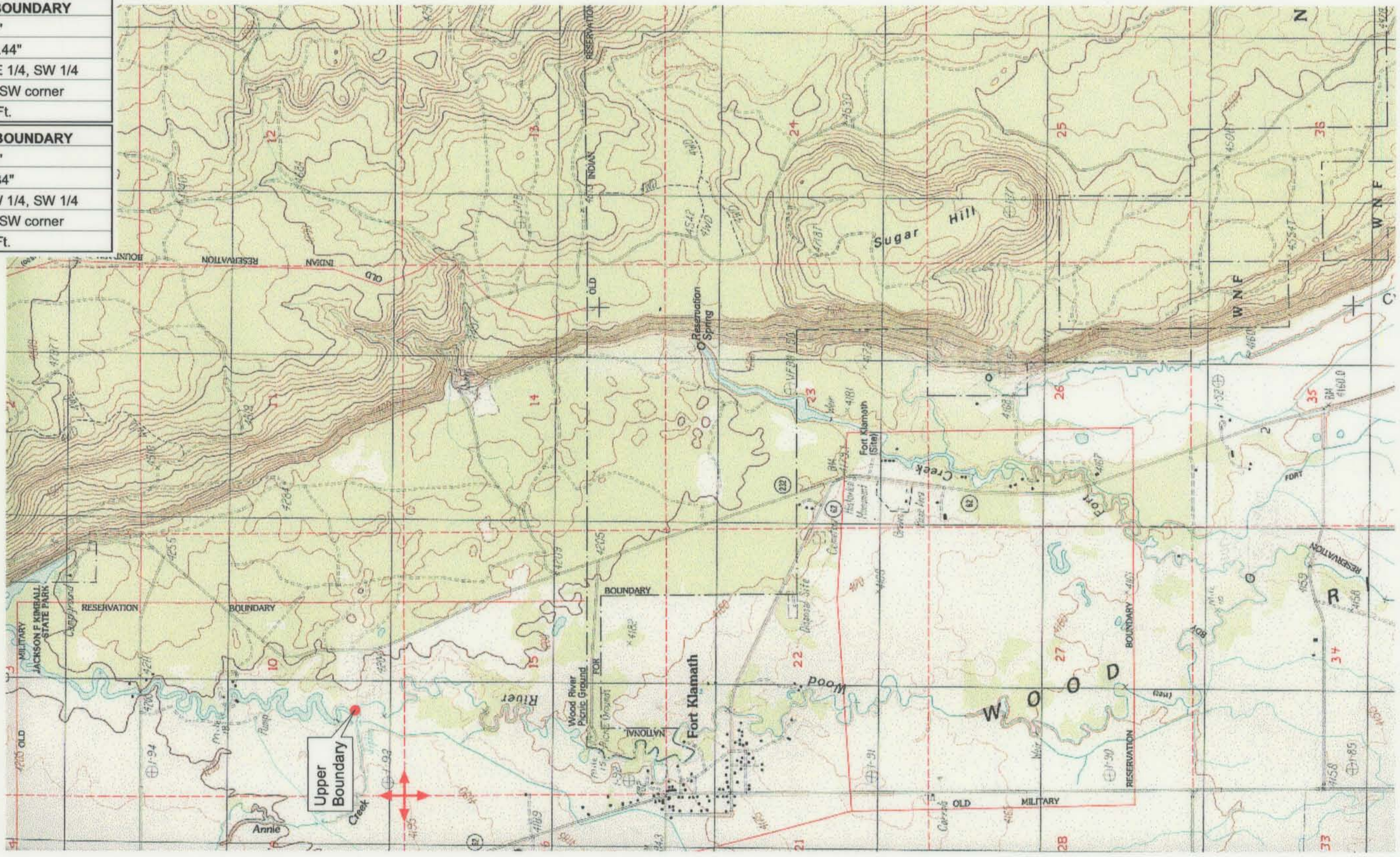


<b>UPPER REACH BOUNDARY</b>
Latitude: 42° 43' 18.57"
Longitude: 121° 59' 18.44"
T 33S, R 7.5E, S 10, SE 1/4, SW 1/4
Bearing/Distance: From SW corner N 65° 15' 37" E, 1,942.1 Ft.
<b>LOWER REACH BOUNDARY</b>
Latitude: 42° 36' 15.93"
Longitude: 121° 57' 0.34"
T 34S, R 7.5E, S 24, SW 1/4, SW 1/4
Bearing/Distance: From SW corner N 78° 41' 24" E, 1,211.8 Ft.



Source: USGS 7.5 Minute Quad: Fort Klamath, Fort Creek, Agency Lake.

Vertical Datum: National Geodetic Vertical Datum of 1929.  
Horizontal Datum: 1927 North American Datum.

**KLAMATH ADJUDICATION**  
**CLAIM # 668 PAGE # 013**

Reach boundaries: Annie Creek to Agency Lake.  
 Plate 1 of 2.

**RECEIVED**  
 OCT 01 1999  
 WATER RESOURCES DEPT.  
 SALEM, OREGON

**Klamath Basin Water Rights Claim #668**  
 Department of the Interior Bureau of Indian Affairs  
 Reach Name: **Wood River #2 (WD 2)**  
 Scale: 1:24,000 (Amended)

\\Lafayette\Graphics\Projects\GIS\BIA\60177.26\Topo\1117gis1.frb