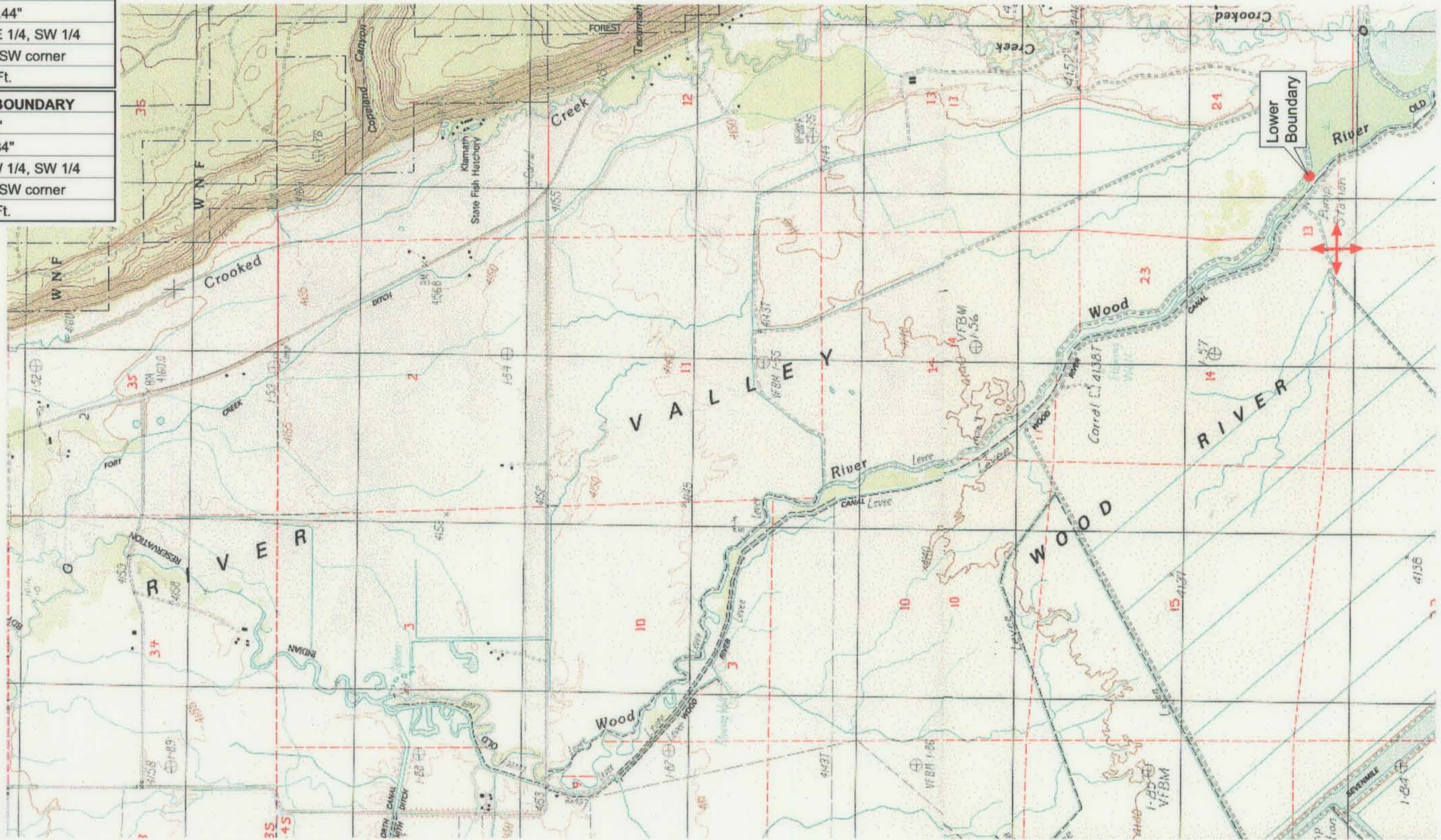


UPPER REACH BOUNDARY
Latitude: 42° 43' 18.57"
Longitude: 121° 59' 18.44"
T 33S, R 7.5E, S 10, SE 1/4, SW 1/4
Bearing/Distance: From SW corner N 65° 15' 37" E, 1,942.1 Ft.
LOWER REACH BOUNDARY
Latitude: 42° 36' 15.93"
Longitude: 121° 57' 0.34"
T 34S, R 7.5E, S 24, SW 1/4, SW 1/4
Bearing/Distance: From SW corner N 78° 41' 24" E, 1,211.8 Ft.



Source: USGS 7.5 Minute Quad: Fort Klamath, Fort Creek, Agency Lake.
 Vertical Datum: National Geodetic Vertical Datum of 1929.
 Horizontal Datum: 1927 North American Datum.

KLAMATH ADJUDICATION
CLAIM # 668 PAGE # 014

Reach boundaries: Annie Creek to Agency Lake.
 Plate 2 of 2.

RECEIVED
 OCT 01 1999

Klamath Basin Water Rights Claim #668
 Department of the Interior Bureau of Indian Affairs
 Reach Name: **Wood River #2 (WD 2)**
 Scale: 1:24,000 (Amended)

WATER RESOURCES DEPT.
 SALEM, OREGON

\\Lafayette\Graphics\Projects\GIS\BIA\60177.26\Topo\1117gis1.fh8