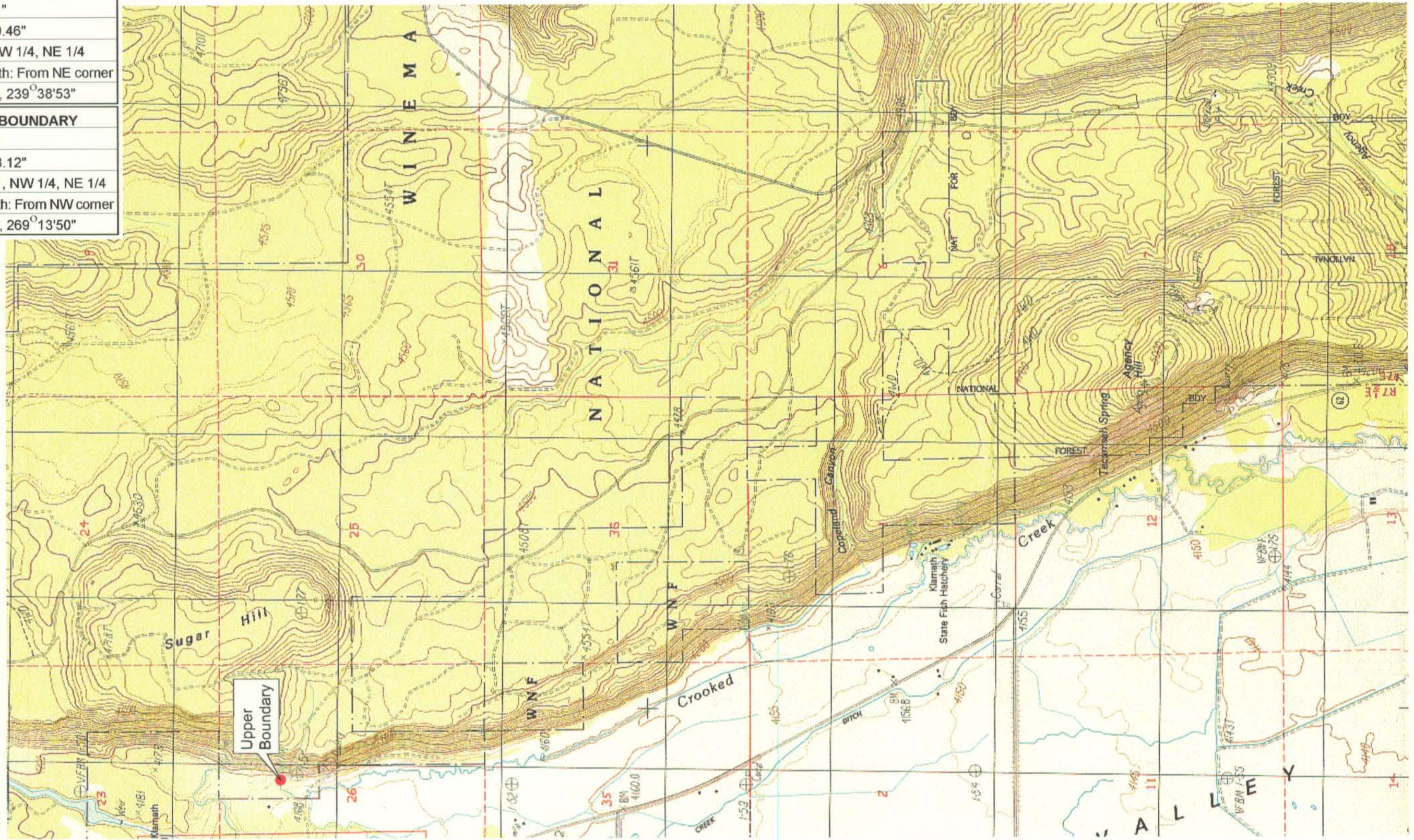


UPPER REACH BOUNDARY
Latitude: 42° 41' 12.01"
Longitude: 121° 57' 49.46"
T 33S, R 7.5E, S 26, NW 1/4, NE 1/4
Distance/Bearing/Azimuth: From NE corner S 59°38'53" W, 781.5m, 239°38'53"
LOWER REACH BOUNDARY
Latitude: 42° 36' 1.06"
Longitude: 121° 56' 18.12"
T 34S, R 7.5E, S 24, NW 1/4, NE 1/4
Distance/Bearing/Azimuth: From NW corner S 89°13'50" W, 477.6m, 269°13'50"



RECEIVED
 MAR 01 1999
 WATER RESOURCES DEPT.
 SALEM, OREGON



Source: USGS 7.5 Minute
 Quad: Fort Klamath, Agency
 Lake.
 Vertical Datum: National
 Geodetic Vertical Datum of
 1929.
 Horizontal Datum: 1927 North
 American Datum.

KLAMATH ADJUDICATION
 CLAIM # **669** PAGE # **05**

Reach: Crooked Creek.
 Plate 1 of 2.

Klamath Basin Water Rights Claim Map
 Department of the Interior Bureau of Indian Affairs
 Reach Name: **Wood River #3**
 Scale: 1:24,000