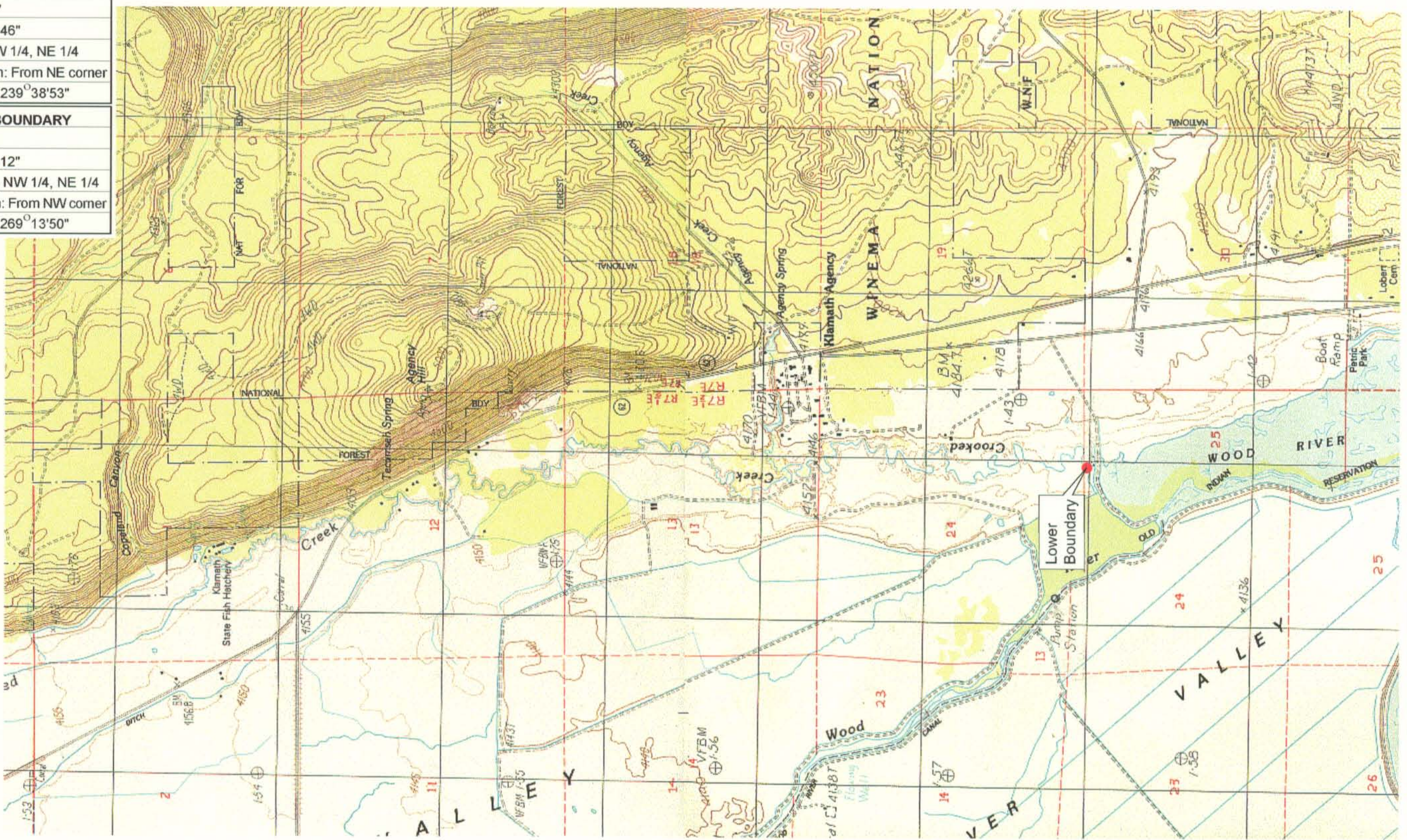


<b>UPPER REACH BOUNDARY</b>
Latitude: 42° 41' 12.01"
Longitude: 121° 57' 49.46"
T 33S, R 7.5E, S 26, NW 1/4, NE 1/4
Distance/Bearing/Azimuth: From NE corner S 59° 38' 53" W, 781.5m, 239° 38' 53"
<b>LOWER REACH BOUNDARY</b>
Latitude: 42° 36' 1.06"
Longitude: 121° 56' 18.12"
T 34S, R 7.5E, S 24, NW 1/4, NE 1/4
Distance/Bearing/Azimuth: From NW corner S 89° 13' 50" W, 477.6m, 269° 13' 50"

**RECEIVED**  
MAR 01 1999  
WATER RESOURCES DEPT  
SALEM, OREGON



Source: USGS 7.5 Minute  
Quad: Fort Klamath, Agency  
Lake.  
Vertical Datum: National  
Geodetic Vertical Datum of  
1929.  
Horizontal Datum: 1927 North  
American Datum.

**KLAMATH ADJUDICATION**  
CLAIM # **669** PAGE # **06**

Reach: Crooked Creek.  
Plate 2 of 2.

**Klamath Basin Water Rights Claim Map**  
Department of the Interior Bureau of Indian Affairs  
Reach Name: **Wood River #3**  
Scale: 1:24,000